

TRANS LEVEL: BY ATC  
TRANS ALT: 5000'

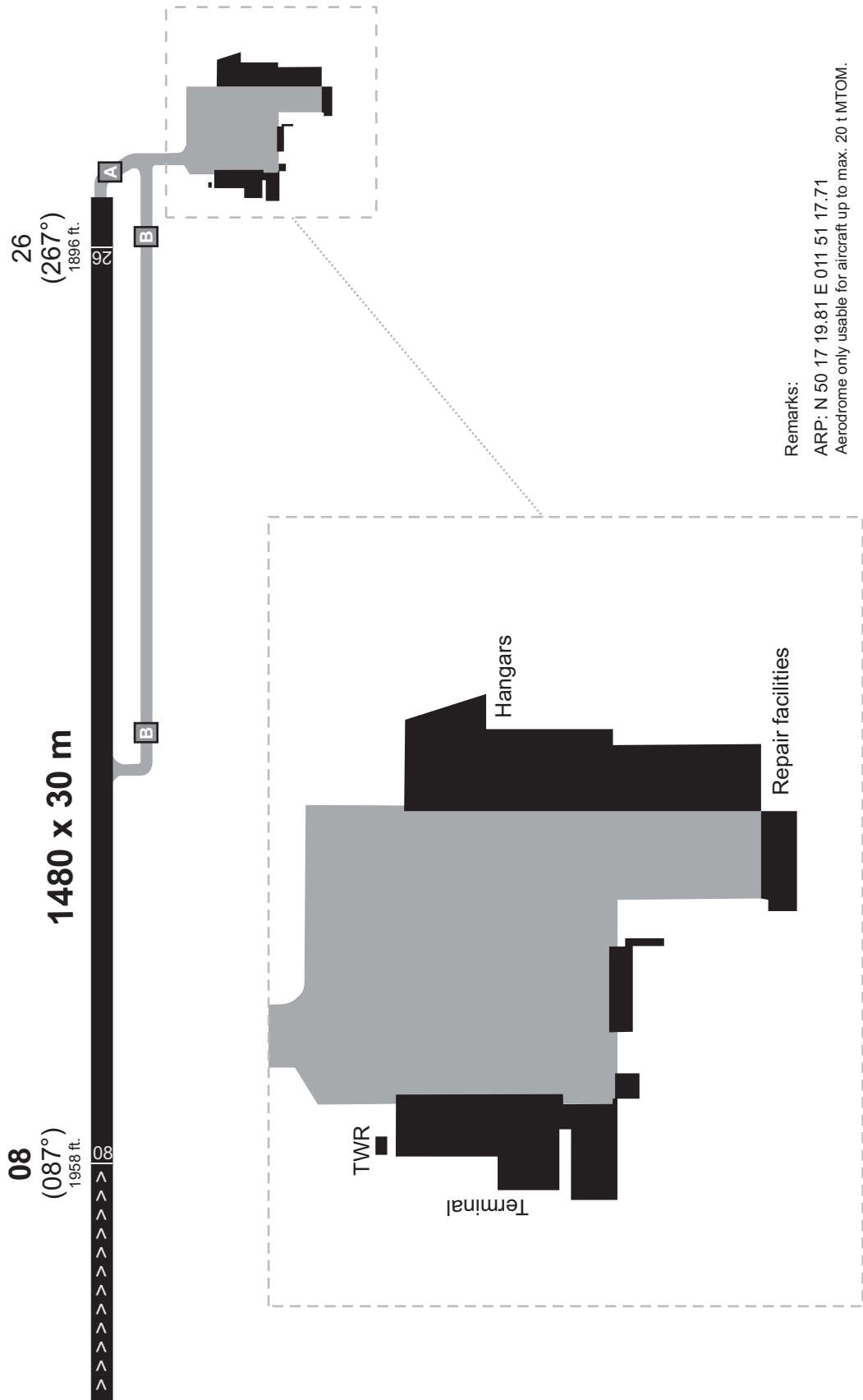
HOF ATIS  
check controller info

HOF Tower  
124.35

MÜNCHEN Radar  
129.52

MÜNCHEN Radar  
124.05

Do not use for real life navigation!



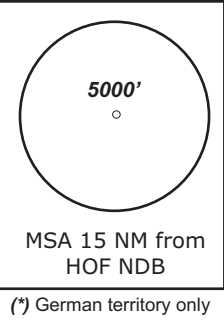
Remarks:  
ARP: N 50 17 19.81 E 011 51 17.71  
Aerodrome only usable for aircraft up to max. 20 t MTOM.

HOF ATIS check controller info	HOF Tower 124.35	MÜNCHEN Radar 129.52	MÜNCHEN Radar 124.05.10
-----------------------------------	---------------------	-------------------------	----------------------------

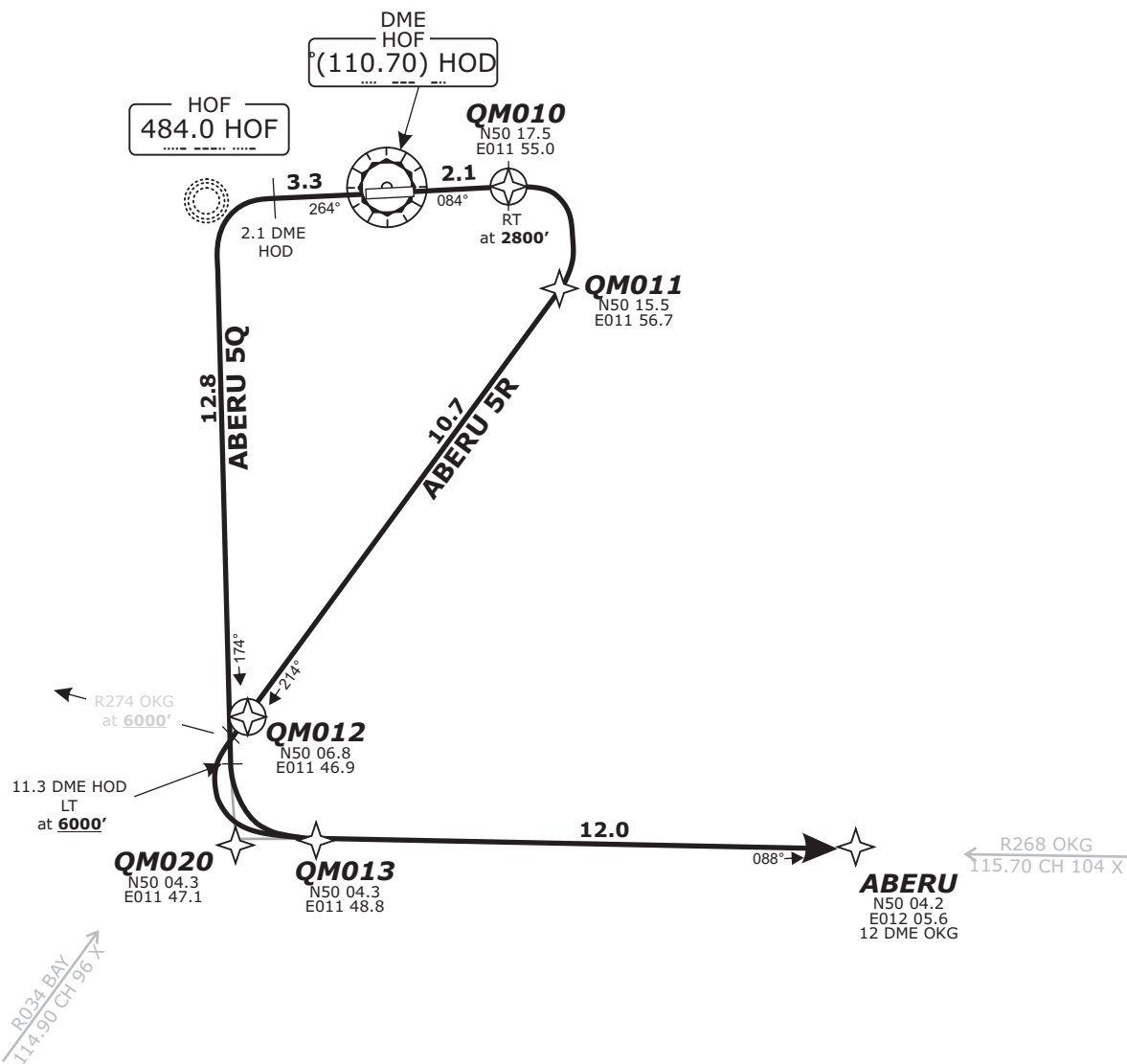
TRANS ALT: 5000'      TRANS LEVEL: By ATC      Apt.Elev. 1960'

**ABERU 5R - ABERU FIVE ROMEO** (22.6 NM)  
**ABERU 5Q - ABERU FIVE QUEBEC** (28.1 NM)

BEARINGS AND TRACKS ARE MAGNETIC.  
ALTITUDES IN FEET MSL  
  
IFR PROFILES WITHIN AIRSPACE  
CLASS E.  
WATCH OUT FOR VFR TRAFFIC  
UNKNOWN TO ATC.



Do not use for real life navigation!



Pilots of GPS/FMS-RNAV-equipped aircraft shall, if possible, use the supplementary GPS/FMS RNAV procedures which are described following the text "GPS / FMS RNAV:" and charted. The ground-based navigation aids required for the use of the respective conventional flight procedure and the associated aircraft equipment shall remain in operation at all times

**Contact München Radar immediately after take-off!**

**Initial climb FL 70**

SID	RWY	ROUTING	GPS/FMS RNAV	REMARKS
<b>ABERU 5Q</b>	<b>26</b>	On RWY track to 2.1 DME HOD, LT, on track 174° HOF to 11.3 DME HOD, LT, on R268 OKG to ABERU. Cross 11.3 DME HOD at 6000 or above. MNM climb gradient 6,8 % (383 ft/NM) to 2300.	HOF[A2400+;L] - QM020[A6000+;L] - ABERU.	
<b>ABERU 5R</b>	<b>08</b>	On RWY track until passing 2800, RT on track 214°/R034 BAY, when crossing R268 OKG LT, on R268 OKG to ABERU. Cross R274 OKG at 6000 or above	QM010[A2800+;R] - QM011 - QM012[A6000+;L] - QM013 - ABERU.	

Revision: 2015-05-28 - Change: MSA radius

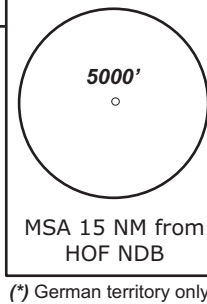
HOF ATIS check controller info	HOF Tower 124.35	MÜNCHEN Radar 129.52	MÜNCHEN Radar 124.05
-----------------------------------	---------------------	-------------------------	-------------------------

TRANS ALT: 5000'      TRANS LEVEL: By ATC      Apt.Elev. 1960'

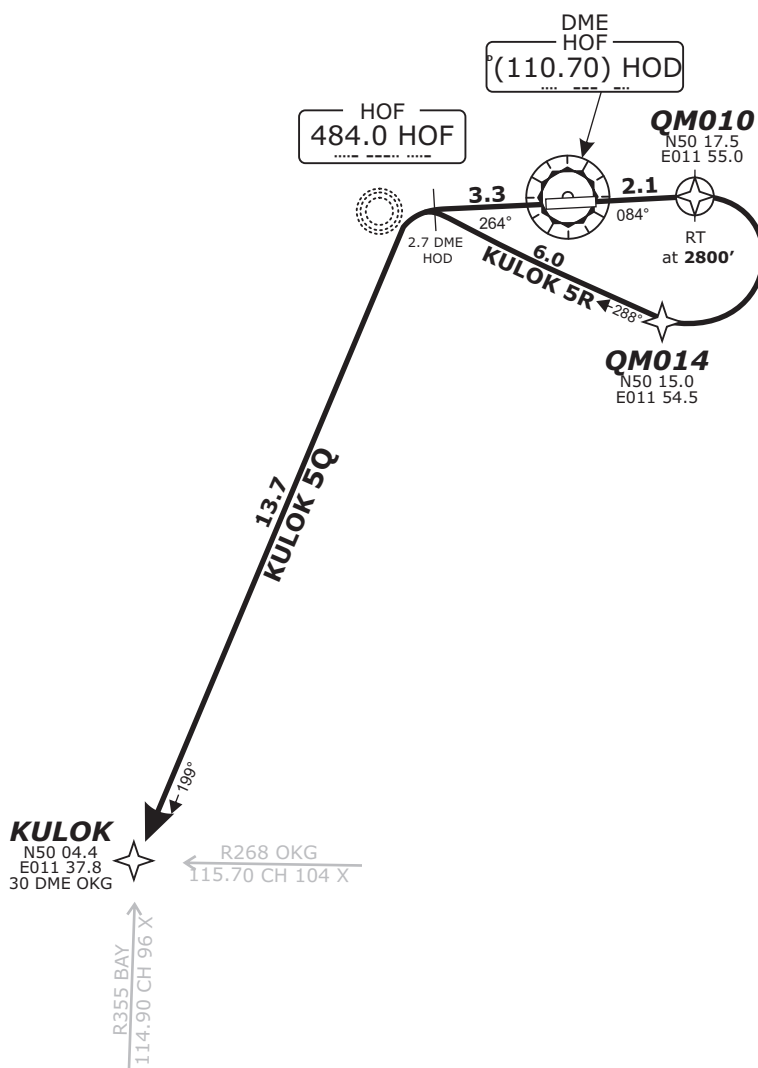
**KULOK 5R - KULOK FIVE ROMEO** (21.8 NM)  
**KULOK 5Q - KULOK FIVE QUEBEC** (17.0 NM)

BEARINGS AND TRACKS ARE MAGNETIC.  
ALTITUDES IN FEET MSL

IFR PROFILES WITHIN AIRSPACE  
CLASS E.  
WATCH OUT FOR VFR TRAFFIC  
UNKNOWN TO ATC.



Do not use for real life navigation!



Pilots of GPS/FMS-RNAV-equipped aircraft shall, if possible, use the supplementary GPS/FMS RNAV procedures which are described following the text "GPS / FMS RNAV:" and charted. The ground-based navigation aids required for the use of the respective conventional flight procedure and the associated aircraft equipment shall remain in operation at all times

**Contact München Radar immediately after take-off!**

**Initial climb 5000'**

SID	RWY	ROUTING	GPS/FMS RNAV	REMARKS
KULOK 5Q	26	On RWY track to 2.7 DME HOD, LT, on track 199° HOF to KULOK. MNM climb gradient 6.3% (383 ft/NM) to 2300.	HOF[A2400+; L] - KULOK.	
KULOK 5R	08	On RWY track until passing 2800, RT, to HOF; on track 199° HOF to KULOK.	QM010[A2800+; R] - QM014 - HOF[L] - KULOK	

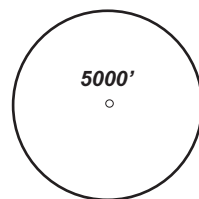
HOF ATIS check controller info	HOF Tower 124.35	MÜNCHEN Radar 129.52	MÜNCHEN Radar 124.05
-----------------------------------	---------------------	-------------------------	-------------------------

TRANS ALT: 5000'

TRANS LEVEL: By ATC

Apt.Elev. 1960'

**LASGA 4R - LASGA FOUR ROMEO** (29.1 NM)  
**LASGA 3Q - LASGA THREE QUEBEC** (24.3 NM)

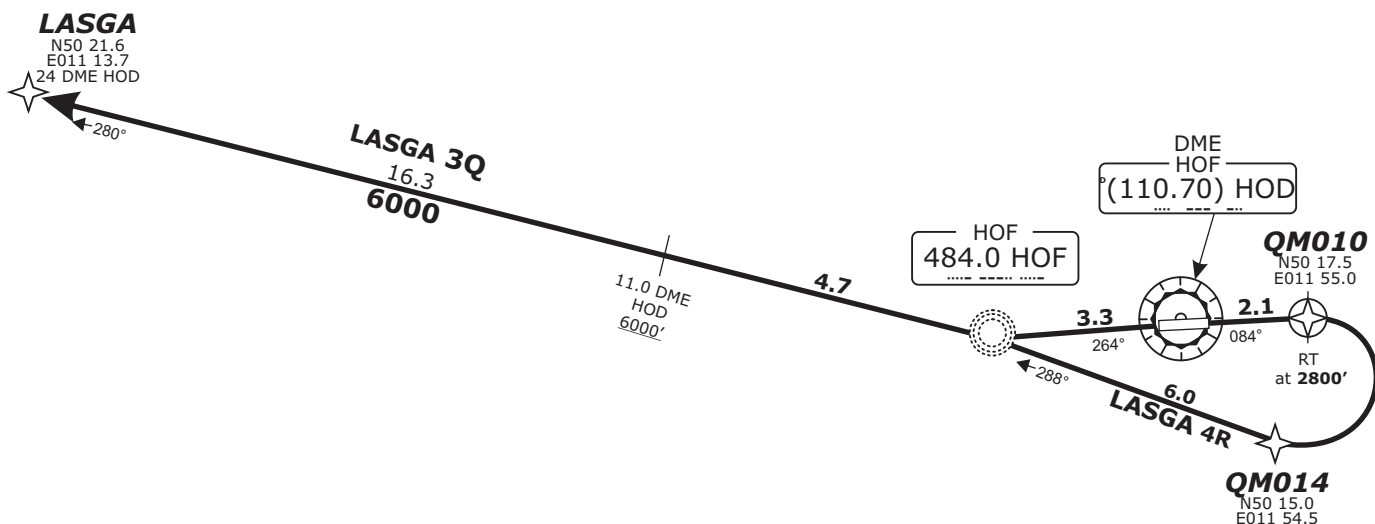


MSA 15 NM from HOF NDB

(\*) German territory only

BEARINGS AND TRACKS ARE MAGNETIC.  
ALTITUDES IN FEET MSL  
  
IFR PROFILES WITHIN AIRSPACE  
CLASS E.  
WATCH OUT FOR VFR TRAFFIC  
UNKNOWN TO ATC.

Do not use for real life navigation!



Pilots of GPS/FMS-RNAV-equipped aircraft shall, if possible, use the supplementary GPS/FMS RNAV procedures which are described following the text "GPS / FMS RNAV:" and charted. The ground-based navigation aids required for the use of the respective conventional flight procedure and the associated aircraft equipment shall remain in operation at all times

**Contact München Radar immediately after take-off!**

**Initial climb FL 70**

SID	RWY	ROUTING	GPS/FMS RNAV	REMARKS
LASGA 3Q	26	Direct to HOF, on track 280° HOF to LASGA . Cross 11.0 DME HOD at 6000 or above. MNM climb gradient 6.8% (383 ft/NM) to 2300.	HOF[A2400+; R] - LASGA.	
LASGA 4R	08	On RWY track until passing 2800, RT, to HOF; on track 280° HOF to LASGA. Cross 11.0 DME HOD at 6000 or above.	QM010[A2800+; R] - QM014 - HOF[L] - LASGA.	

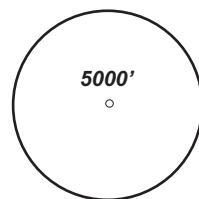
HOF ATIS check controller info	HOF Tower 124.35	MÜNCHEN Radar 129.52	MÜNCHEN Radar 124.05
-----------------------------------	---------------------	-------------------------	-------------------------

TRANS ALT: 5000'

TRANS LEVEL: By ATC

Apt.Elev. 1960'

**PEROX 4R - PEROX FOUR ROMEO** (34.7 NM)  
**PEROX 3Q - PEROX THREE QUEBEC** (29.9 NM)



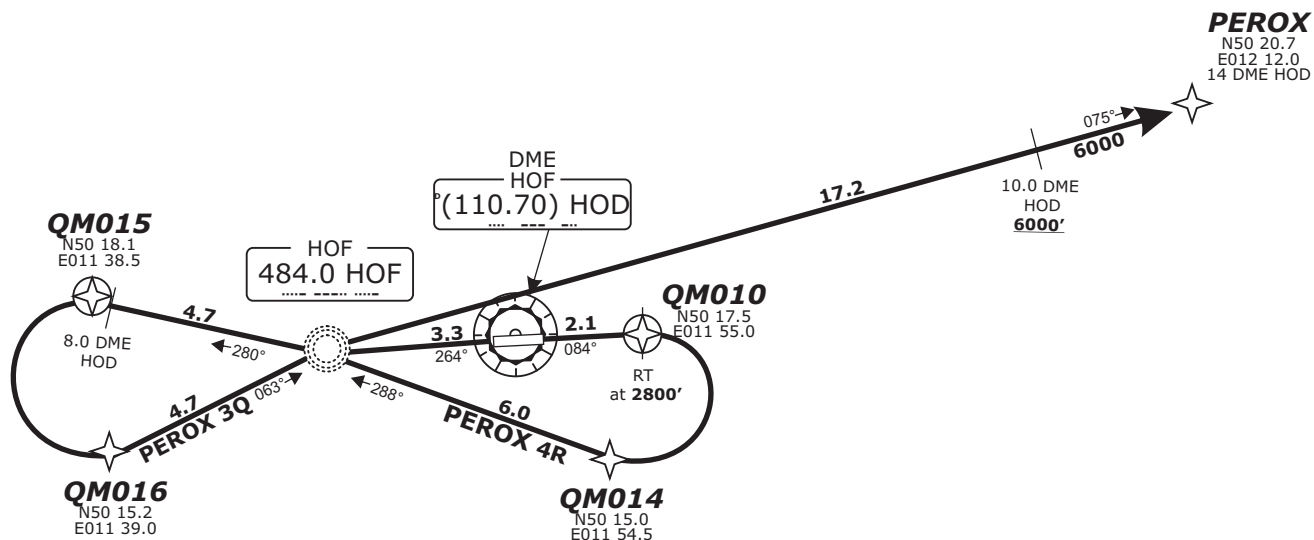
MSA 15 NM from HOF NDB

(\*) German territory only

BEARINGS AND TRACKS ARE MAGNETIC.  
ALTITUDES IN FEET MSL

IFR PROFILES WITHIN AIRSPACE  
CLASS E.  
WATCH OUT FOR VFR TRAFFIC  
UNKNOWN TO ATC.

Do not use for real life navigation!



Pilots of GPS/FMS-RNAV-equipped aircraft shall, if possible, use the supplementary GPS/FMS RNAV procedures which are described following the text "GPS / FMS RNAV:" and charted. The ground-based navigation aids required for the use of the respective conventional flight procedure and the associated aircraft equipment shall remain in operation at all times

**Contact München Radar immediately after take-off!**

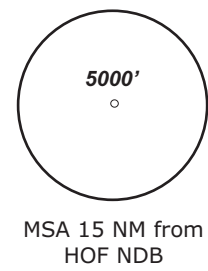
**Initial climb FL 70**

SID	RWY	ROUTING	GPS/FMS RNAV	REMARKS
PEROX 3Q	26	Direct to HOF, on track 280° HOF to 8.0 DME HOD, LT, to HOF; on track 075° HOF to PEROX. Cross 10.0 DME HOD at 6000 or above.	HOF[A2400+; R] - QM015[L] - QM016 - HOF[R] - PEROX.	
PEROX 4R	08	On RWY track until passing 2800, RT, to HOF; on track 280° HOF to 8.0 DME HOD, LT, to HOF; on track 070° HOF to PEROX. Cross 10.0 DME HOD at 6000 or above.	QM010[A2800+; R] - QM014 - HOF[L] - QM015[L] - QM016 - HOF[R] - PEROX.	

HOF ATIS check controller info	HOF Tower 124.35	MÜNCHEN Radar 129.52	MÜNCHEN Radar 124.05
-----------------------------------	---------------------	-------------------------	-------------------------

TRANS ALT: 5000'      TRANS LEVEL: By ATC      Apt.Elev. 1960'

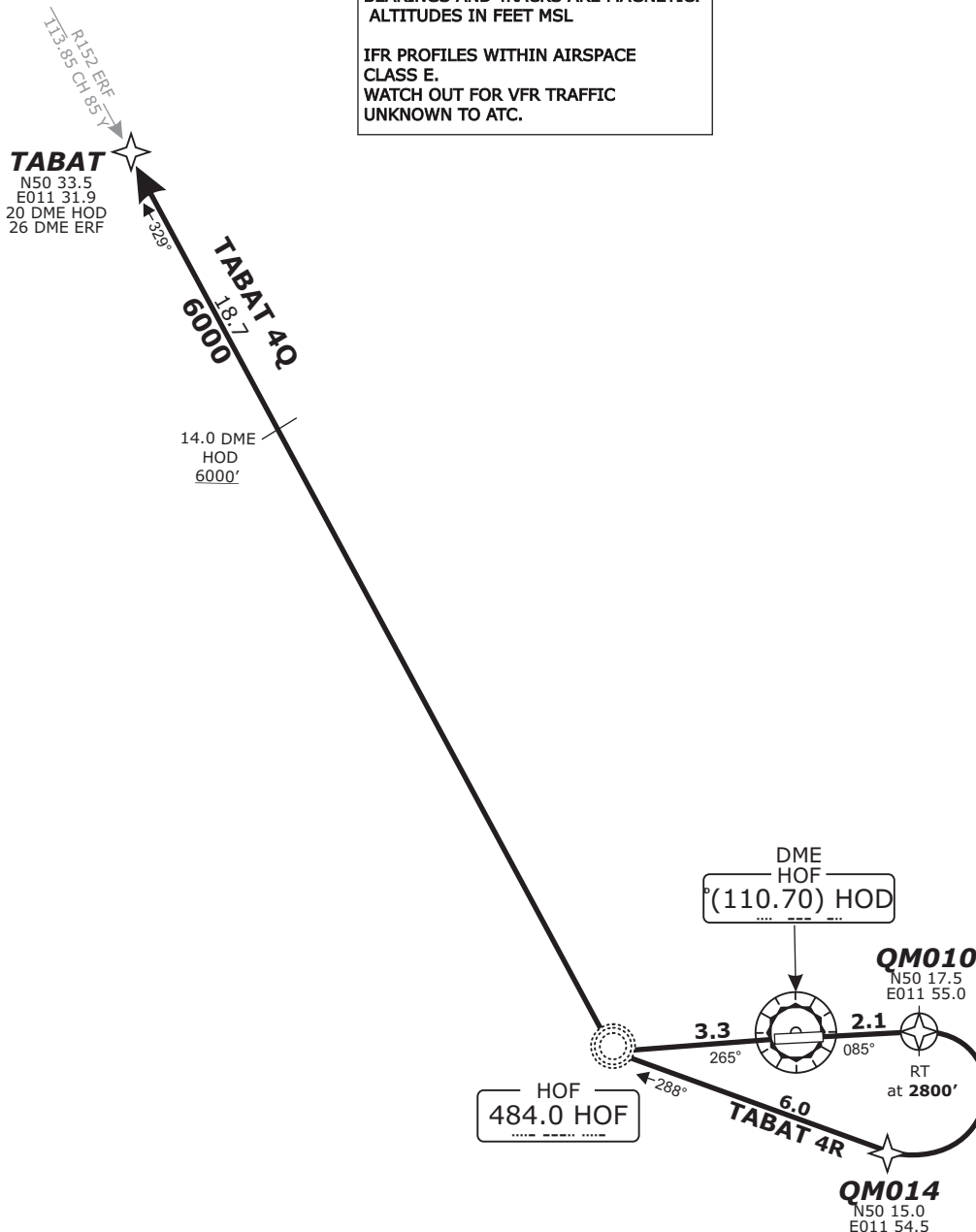
**TABAT 4R - TABAT FOUR ROMEO** (26.8 NM)  
**TABAT 4Q - TABAT FOUR QUEBEC** (22.0 NM)



(\*) German territory only

BEARINGS AND TRACKS ARE MAGNETIC.  
ALTITUDES IN FEET MSL

IFR PROFILES WITHIN AIRSPACE  
CLASS E.  
WATCH OUT FOR VFR TRAFFIC  
UNKNOWN TO ATC.



Do not use for real life navigation!

Pilots of GPS/FMS-RNAV-equipped aircraft shall, if possible, use the supplementary GPS/FMS RNAV procedures which are described following the text "GPS / FMS RNAV:" and charted. The ground-based navigation aids required for the use of the respective conventional flight procedure and the associated aircraft equipment shall remain in operation at all times

**Contact München Radar immediately after take-off!**

**Initial climb FL 70**

SID	RWY	ROUTING	GPS/FMS RNAV	REMARKS
<b>TABAT 4Q</b>	<b>26</b>	On RWY track to 2.7 DME HOD, RT, on track 330° HOF to TABAT. Cross 14.0 DME HOD at 6000 or above. MNM climb gradient 6.8% (383 ft/NM) to 2300.	HOF[A2400+; R] - TABAT.	
<b>TABAT 4R</b>	<b>08</b>	On RWY track until passing 2800, RT, to HOF; on track 329° HOF to TABAT. Cross 14.0 DME HOD at 6000 or above.	QM010[A2800+; R] - QM014 - HOF[R] - TABAT.	

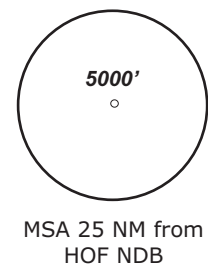
HOF ATIS check controller info	HOF Tower 124.35	MÜNCHEN Radar 129.52	MÜNCHEN Radar 124.05
-----------------------------------	---------------------	-------------------------	-------------------------

TRANS ALT: 5000'

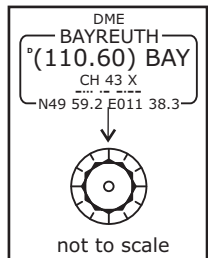
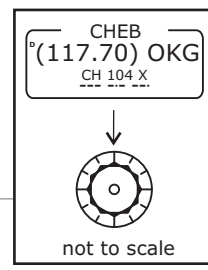
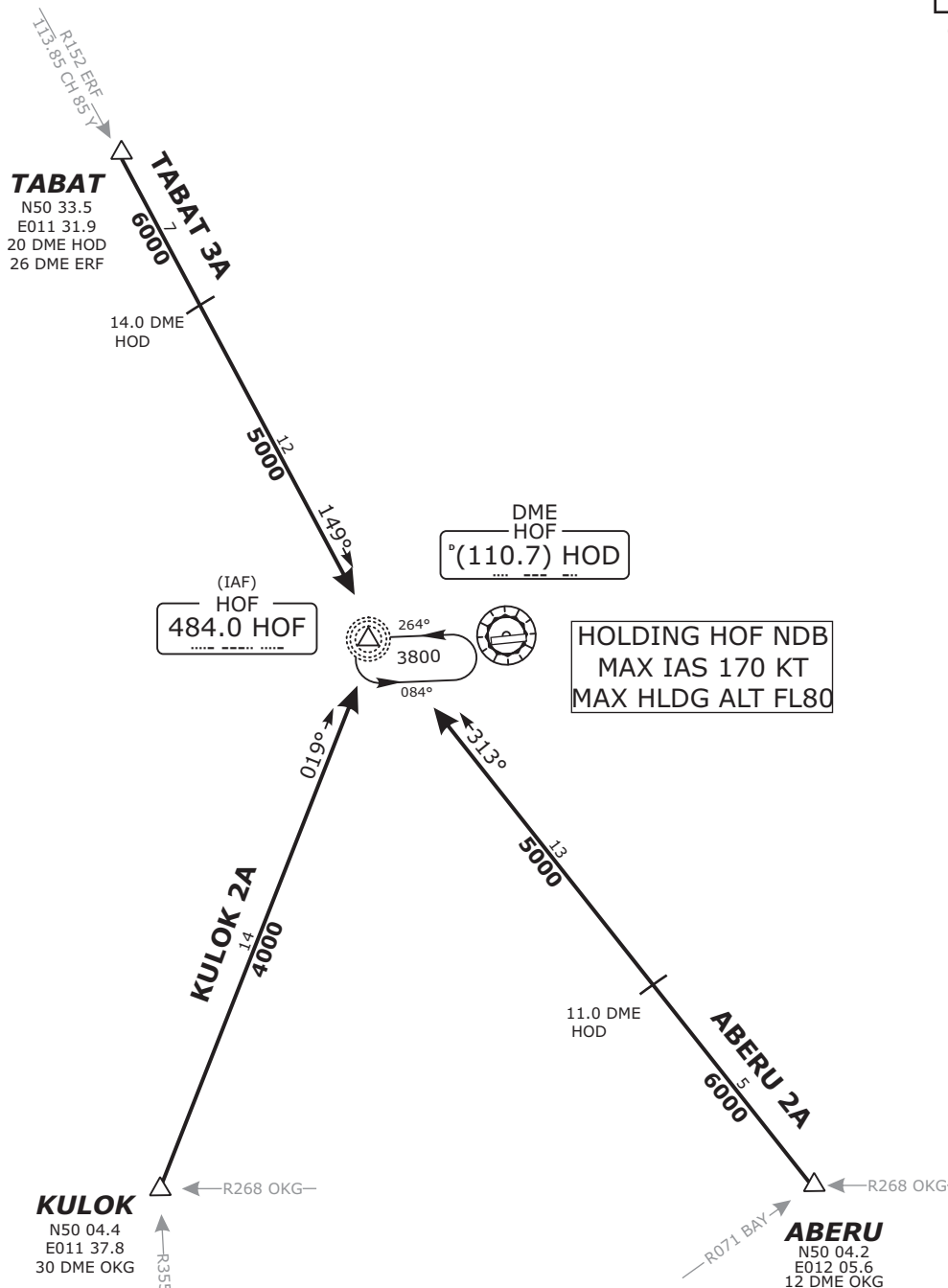
TRANS LEVEL: By ATC

Apt.Elev. 1960'

**ABERU 2A - ABERU TWO ALPHA [ABER2A]**  
**KULOK 2A - KULOK TWO ALPHA [KULO2A]**  
**TABAT 3A - TABAT THREE ALPHA [TABA3A]**



(\*) German territory only



BEARINGS AND TRACKS ARE MAGNETIC.  
ALTITUDES IN FEET MSL

IFR PROFILES WITHIN AIRSPACE CLASS E.  
WATCH OUT FOR VRF TRAFFIC UNKNOWN TO ATC.

Do not use for real life navigation!

Revision: 2013-05-30 - Change: Rwy designators, procedure, BAY DME withdrawn

TRANS LEVEL: BY ATC TRANS ALT: 5000'		HOF Tower 124.35		MÜNCHEN Radar 129.52		MÜNCHEN Radar 124.05	
NDB HOF <b>484.0</b>	VOR/DME HOD <b>110.70</b>	Final Apch Course <b>264°</b>	FAF GP INOP 5.3 DME HOD <b>3800'</b>	MDA(H) <b>2376'</b> (480')	Apt.Elev. 1960'		

**MISSED APCH:** Climb straight ahead to 5.3 DME HOD, RT to HOF NDB to 3800.

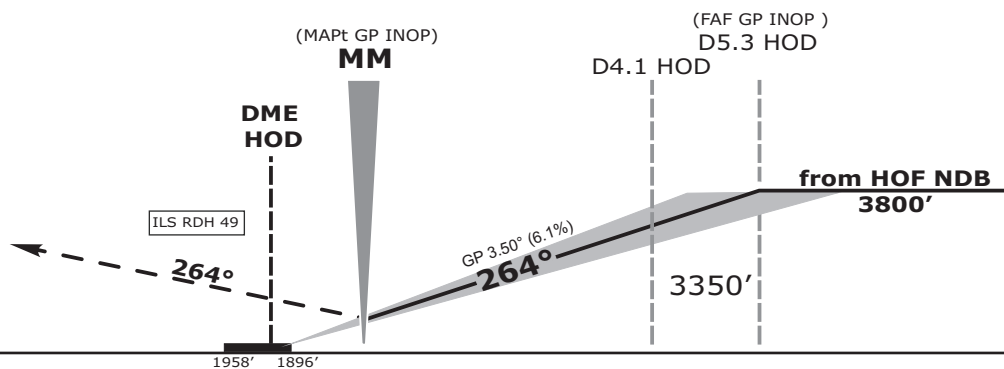
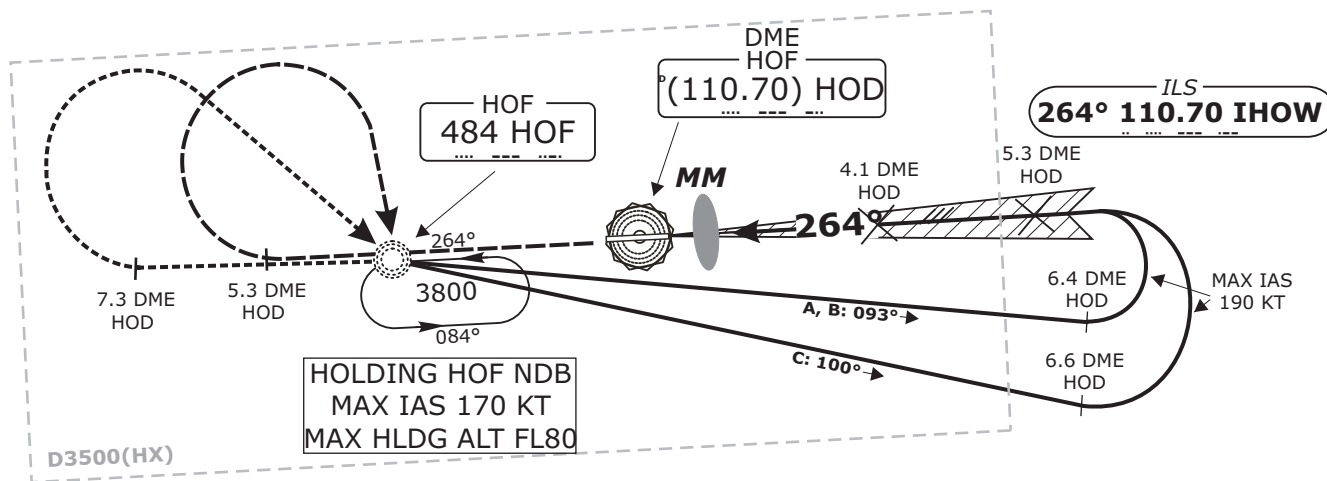
BEARINGS AND TRACKS ARE MAGNETIC.  
ALTITUDES IN FEET MSL

IFR PROFILES WITHIN AIRSPACE  
CLASS E.  
WATCH OUT FOR VFR TRAFFIC  
UNKNOWN TO ATC.

**LOC: DME  
REQUIRED.**

MSA 25 NM from  
HOF NDB

(\*) German territory only



<b>OCA (OCH)</b>	A	B	C			DME DMN	2	3	4	5						
ILS CAT I	2176' (228)	2188' (292)	2200' (304)			DIST THR	1.7	2.7	3.7	4.7						
GP INOP	2390' (490)	2390' (490)	2390' (490)			ALTITUDE	2580'	2950'	3320'	3690'						
CIRCLING* <small>OCH RELATED TO AD ELEV</small>	2550' (590)	2560' (600)	3060' (1100)			<b>LOC-DME:</b> Timing not authorized for defining the MAPt.										
						GS	kt					80	100	120	140	160
						D4.1 HOD-THR (3.8 NM)	MIN:SEC		2:51	2:17	1:54	1:38	1:26	1:16		
						Rate of Descent (6.1%)	ft/MIN		490	620	740	860	990	1110		

\*SOUTH OF AERODROME ONLY

Do not use for real life navigation!



TRANS LEVEL: BY ATC TRANS ALT: 5000'		HOF Tower 124.35		MÜNCHEN Radar 129.52		MÜNCHEN Radar 124.05	
NDB HOF <b>484.0</b>	VOR/DME HOD <b>110.70</b>	Final Apch Course <b>084°</b>	FAF 6.0 DME HOD <b>3800'</b>	MDA(H) <b>2500'</b> (540)	Apt.Elev. 1960'		

**MISSED APCH:** Climb straight ahead to 2800, RT, continue climb to HOF NDB to 3800.

BEARINGS AND TRACKS ARE MAGNETIC.  
ALTITUDES IN FEET MSL

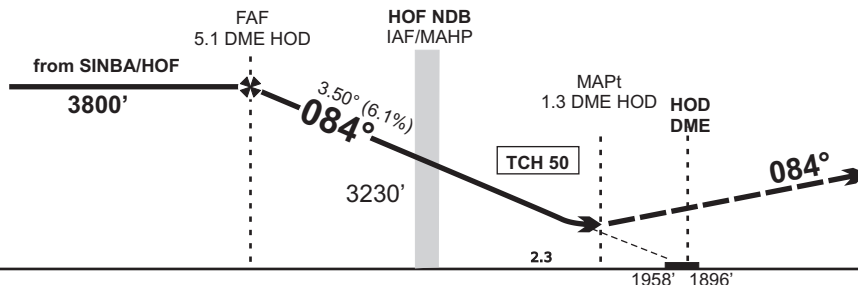
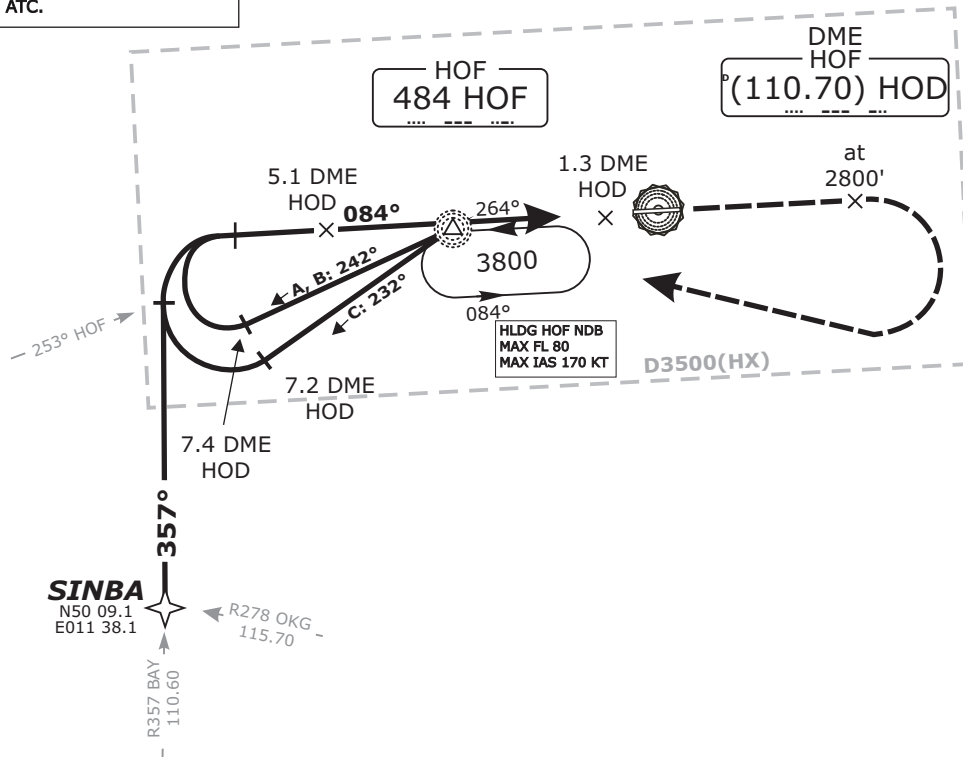
IFR PROFILES WITHIN AIRSPACE  
CLASS E.  
WATCH OUT FOR VFR TRAFFIC  
UNKNOWN TO ATC.

**DME  
REQUIRED.**

MSA 25 NM from  
HOF NDB

(\*) German territory only

Do not use for real life navigation!



<b>OCA (OCH)</b>	A	B	C			DME DMN	<b>5</b>	<b>4</b>	<b>3</b>	<b>2</b>						
NDB-DME	2500'	2500'	2500'			DIST THR	4.7	3.7	2.7	1.7						
	(540)	(540)	(540)			ALTITUDE	3750'	3380'	3010'	2640'						
						Timing not authorized for defining the MAPt.										
						GS	kt				<b>80</b>	<b>100</b>	<b>120</b>	<b>140</b>	<b>160</b>	<b>180</b>
CIRCLING*	2550'	2560'	3060'			HOF - 1.3 DME HOD (2.3 NM)	MIN:SEC		1:44	1:23	1:09	0:59	0:52	0:46		
OCH RELATED TO AD ELEV	(590)	(600)	(1100)			Rate of Descent (6.1%)	ft/MIN		420	620	740	860	990	1110		

\*SOUTH OF AERODROME ONLY

TRANS LEVEL: BY ATC TRANS ALT: 5000'		HOF Tower 124.35		MÜNCHEN Radar 129.52		MÜNCHEN Radar 124.05	
NDB HOF <b>484.0</b>	VOR/DME HOD <b>110.70</b>	Final Apch Course <b>264°</b>	FAF 5.3 DME HOD <b>3800'</b>	MDA(H) <b>2550'</b> (660)	Apt.Elev. 1960'		

**MISSED APCH:** Climb straight ahead to 5.3 DME HOD, RT to HOF NDB to 3800.

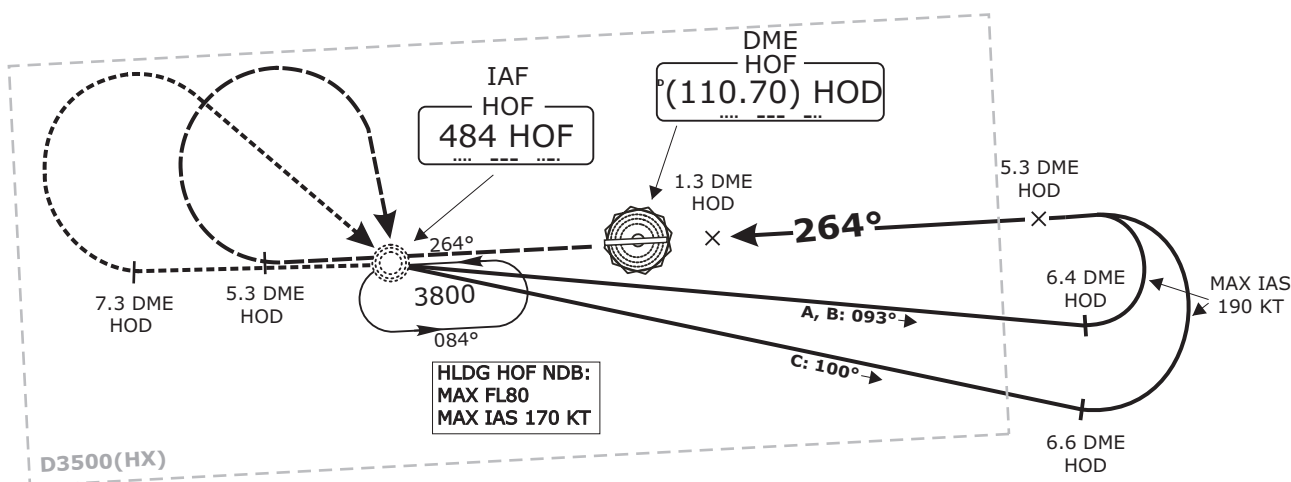
BEARINGS AND TRACKS ARE MAGNETIC.  
ALTITUDES IN FEET MSL

IFR PROFILES WITHIN AIRSPACE  
CLASS E.  
WATCH OUT FOR VFR TRAFFIC  
UNKNOWN TO ATC.

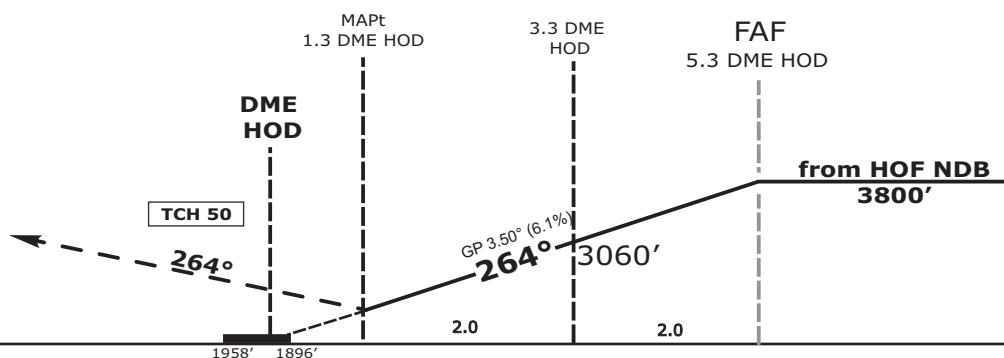
**DME  
REQUIRED.**

MSA 25 NM from  
HOF NDB

(\*) German territory only



Do not use for real life navigation!



OCA (OCH)	A	B	C	DME DMN	2	3	4	5											
NDB-DME	2350'	2350'	2350'	DIST THR	1.7	2.7	3.7	4.7											
	(460)	(460)	(460)	ALTITUDE	2580'	2950'	3320'	3690'											
Timing not authorized for defining the MAPt.																			
GS										kt									
CIRCLING* OCH RELATED TO AD ELEV										3.3 DME HOD - 1.3 DME HOD (2.0 NM)		MIN:SEC		1:30	1:12	1:00	0:51	0:45	0:40
										Rate of Descent (6.1%)		ft/MIN		490	620	740	860	990	1110

\*SOUTH OF AERODROME ONLY