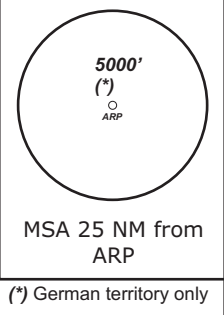


| | | | |
|---|-------------------------|-------------------------|-------------------------|
| TRANS LEVEL: BY ATC TRANS ALT: 5000' | BAYREUTH Info 127.52 | MÜNCHEN Radar 129.52 | MÜNCHEN Radar 124.05 |
|---|-------------------------|-------------------------|-------------------------|

Apt Elev: 1601' Trans level: By ATC Trans alt: 5000'

PIVIR 1G - PIVIR ONE GOLF (20.5 NM)
PIVIR 2R - PIVIR TWO ROMEO (33.6 NM)

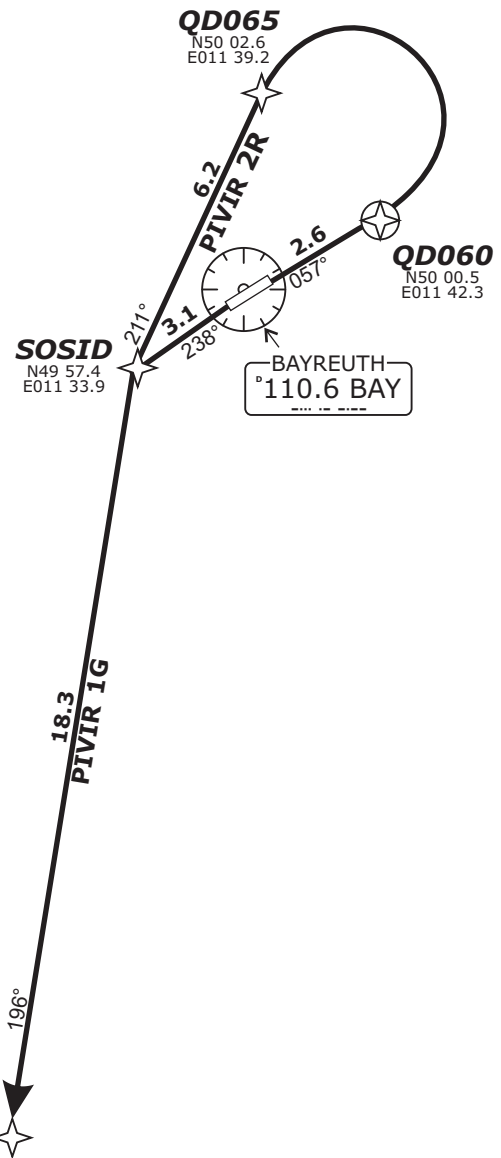


BEARINGS AND TRACKS
ARE MAGNETIC.
ALTITUDES IN FEET MSL

DEPARTURES ENTERING
CONTROLLED AIRSPACE
WHEN PASSING 1000 GND.

CAUTION!
ALL DEPARTURE ROUTES.
DUE TO MOUNTAINOUS TERRAIN
EAST OF FIELD CLIMB WITH
6.6% (400ft/NM) OR MORE
UNTIL PASSING 3000

Do not use for real life navigation!



Report passing 2600' to Bayreuth Info and Contact München Radar Initial climb 5000'

| SID | RWY | ROUTING | GPS/FMS RNAV | REMARKS |
|-----------------|-----------|---|---|--|
| PIVIR 1G | 24 | Climb on track 238° to SOSID, LT, on track 196° to PIVIR. Climb with 4.5% (273 ft/min) or more until passing 3000 | [A2000+] - SOSID[L] - PIVIR. | 1. Only for flights DEST EDDN. 2. Not to be used during activity of NLFS. ALTN Route by ATC. 3. PDG due to airspace structure. |
| PIVIR 2R | 06 | Climb on track 057° to QD060, LT, via QD065 on track 211° to SOSID, LT, on track 196 ° to PIVIR. Climb with 6.6% (400 ft/min) or more until passing 3000 | QD060[A2000+, L] - QD065 - SOSID[R] - PIVIR | Only for flights DEST EDDN. |

Revision: 2014-12-11 - Change: Note modified, note deleted