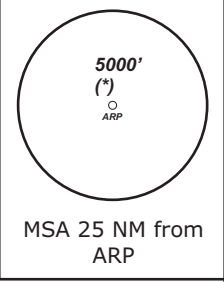


TRANS LEVEL: BY ATC TRANS ALT: 5000'	BAYREUTH Info 127.52	MÜNCHEN Radar 129.52	MÜNCHEN Radar 124.05
---	-------------------------	-------------------------	-------------------------

Apt Elev: 1601' Trans level: By ATC Trans alt: 5000'

LONLI 3R - LONLI THREE ROMEO (20.5 NM)
LONLI 2G - LONLI TWO GOLF (25.6 NM)



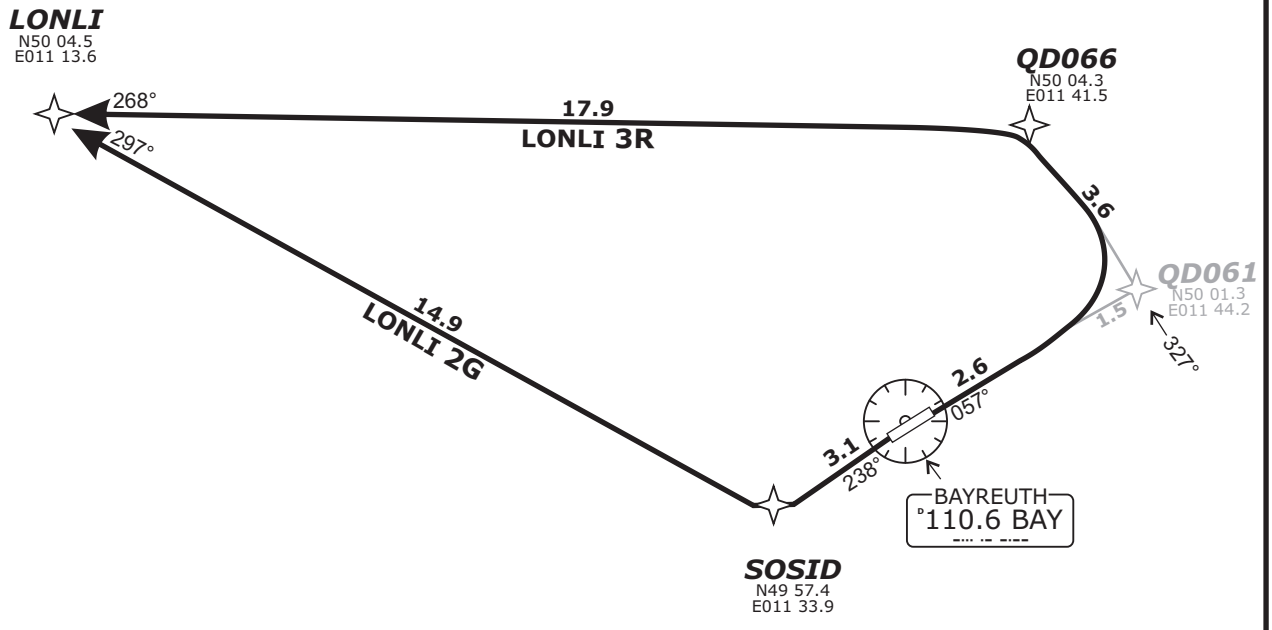
BEARINGS AND TRACKS
ARE MAGNETIC.
ALTITUDES IN FEET MSL

CAUTION!
ALL DEPARTURE ROUTES.
DUE TO MOUNTAINOUS TERRAIN
EAST OF FIELD CLIMB WITH
6.6% (400ft/NM) OR MORE
UNTIL PASSING 3000

DEPARTURES ENTERING
CONTROLLED AIRSPACE
WHEN PASSING 1000 GND.

(*) German territory only

Do not use for real life navigation!



Report passing 2600' to Bayreuth Info and Contact München Radar Initial climb 5000'

SID	RWY	ROUTING	GPS/FMS RNAV	REMARKS
LONLI 2G	24	Climb on track 238° to SOSID, RT, on track 296° to LONLI. Climb with 4.5% (273 ft/min) or more until passing 5000	[A2000+] - SOSID[R] - LONLI.	1. Not to be used during activity of NLFS. ALTN Route by ATC. 2. PDG due to airspace structure.
LONLI 3R	06	Climb on track 057° to QD061, LT, on track 327° to QD066, LT, on track 268° to LONLI. Climb with 6.6% (400 ft/min) or more until passing 3000	[A2000+] - QD061[L] - QD066[L] - LONLI	

Revision: 2014-12-11 - Change: Note modified, note deleted