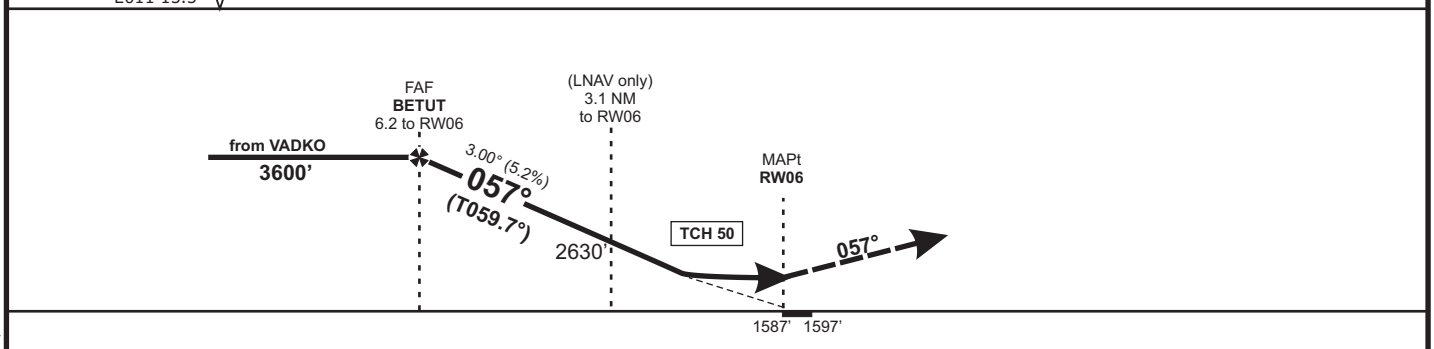
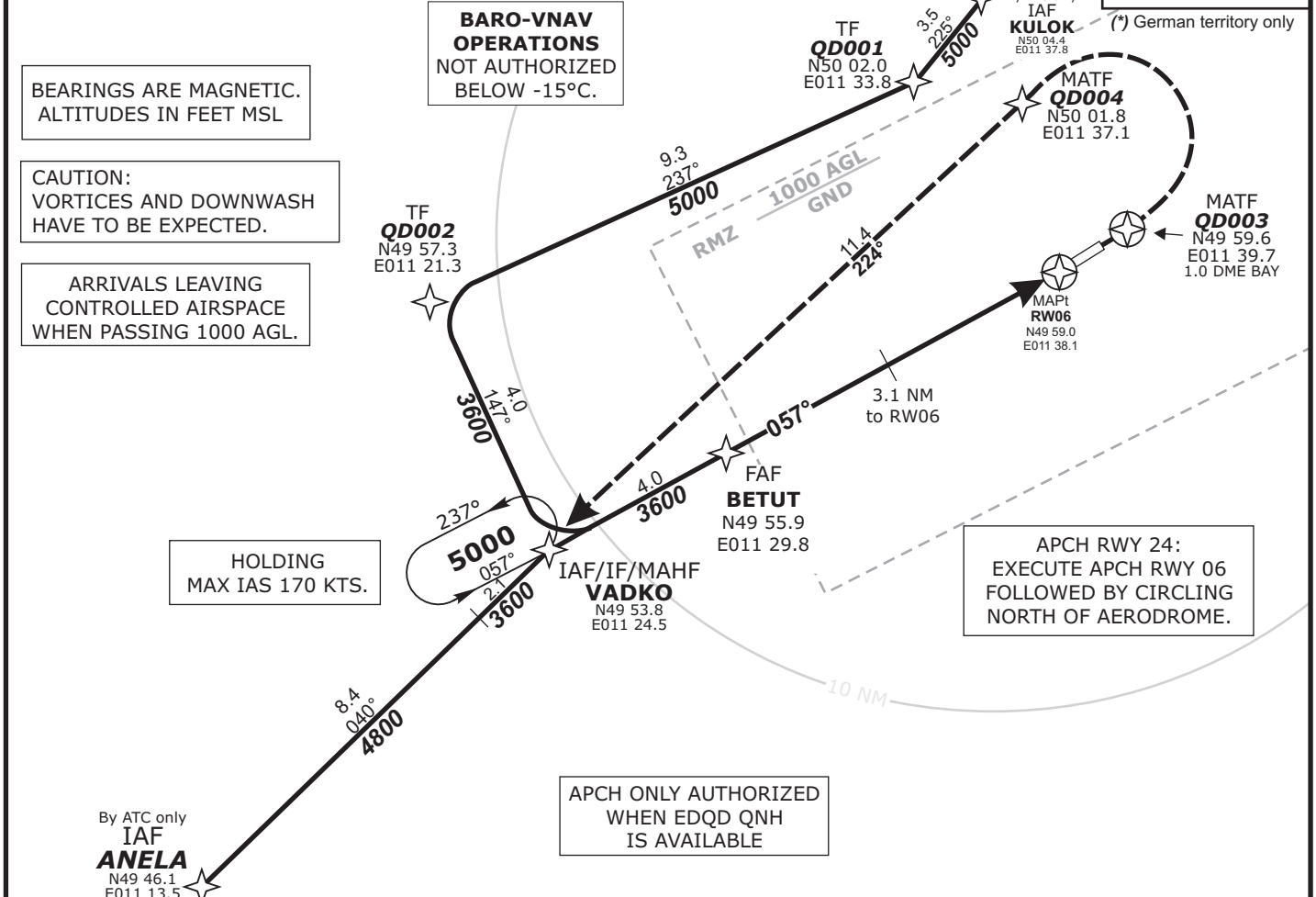


BAYREUTH Info 127.52		MÜNCHEN Radar 129.52		MÜNCHEN Radar 124.05	
-------------------------	--	-------------------------	--	-------------------------	--

BAY VOR 110.6	Final Apch Course 057°	FAF BETUT 3600'	LNAV/VNAV DA(H) 1890' (300')	Apt.Elev. 1601' Rwy06 Elev. 1587' Rwy24 Elev. 1597'	<p>5000' (*) ARP</p>
-------------------------	-------------------------------------	------------------------------	---	---	------------------------------

MISSED APCH:
RNAV (GPS): On track 057° to QD003, LT, via QD004 on tack 224° to VADKO climbing 5000.
QD003[L] - QD004 - VADKO[A5000].

Alt Set: hPa (IN on req) Rwy Elev: 57 hPa Trans level: By ATC Trans alt: 5000'



OCA (OCH)	A	B			DIST THR / RW06	6	5	4	3	2		
LNAV	2000 (420)	2000 (420)			ALTITUDE	3550	3230	2920	2600	2280		
LNAV/VNAV	1890 (300)	1890 (300)										
CIRCLING*	2150 (550)	2470 (870)			GS	kts		80	100	120	140	
					BETUT - RW06 (6.2 NM)	MIN:SEC	4:38	3:42	3:05	2:39		
*North of aerodrome only					Rate of descent (5.2%)	ft/MIN	420	530	640	740		

Do not use for real life navigation!

Revision: 2014-12-11 - Change: Airspace F replaced by RMZ, note mod., note deleted