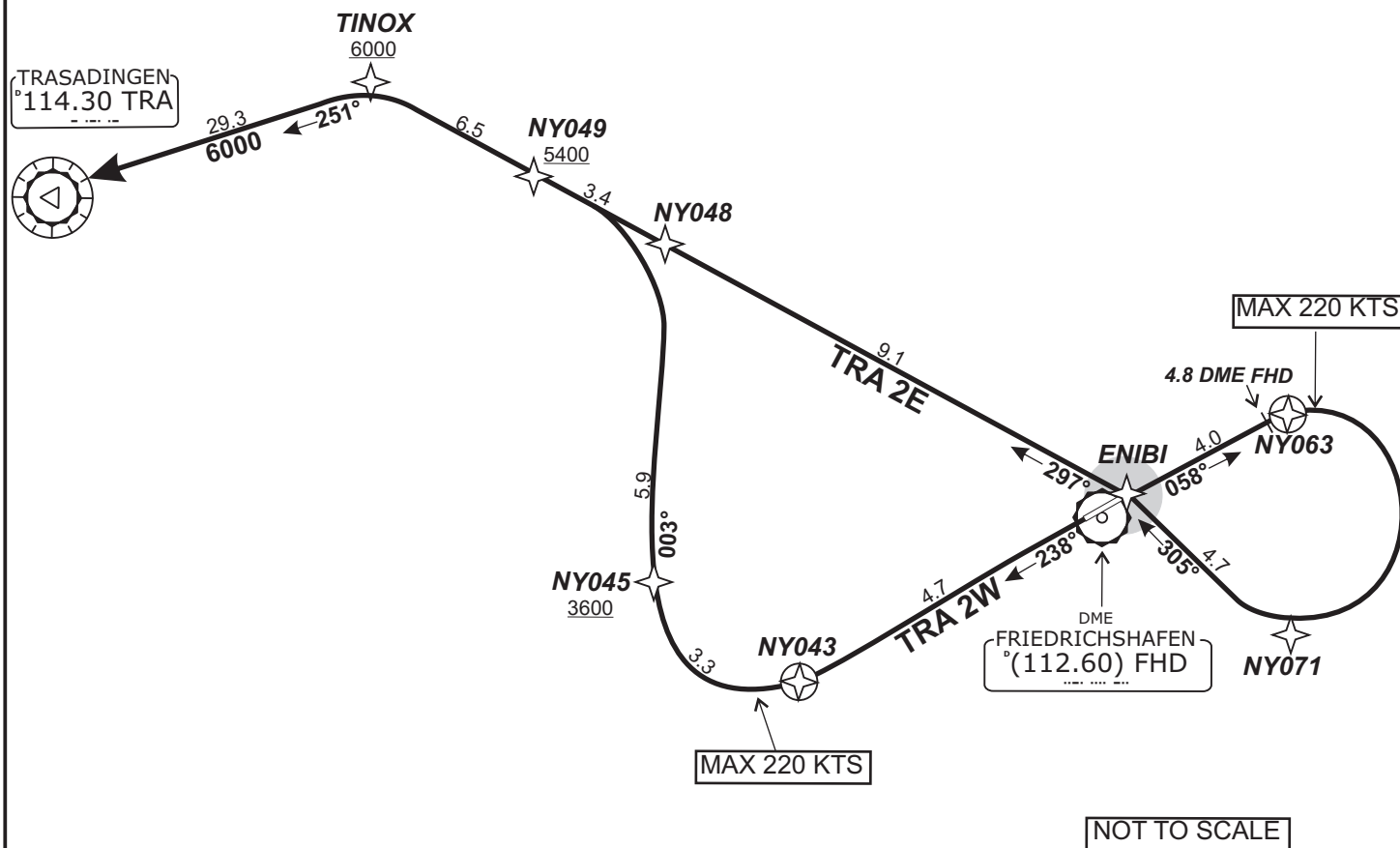
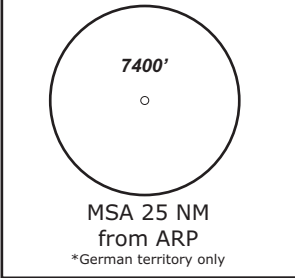


TRANS LEVEL: BY ATC TRANS ALT: 5000'	ATIS 129.60	FRIEDRICHSHAFEN Tower 120.07	ZURICH Arrival 135.22	SWISS Radar 128.05
---	----------------	---------------------------------	--------------------------	-----------------------

**TRASADINGEN TWO WHISKEY - TRA 2W**  
**TRASADINGEN TWO ECHO - TRA 2E**



IFR PROFILES WITHIN AIRSPACE CLASS E. WATCH OUT FOR VFR TRAFFIC UNKNOWN TO ATC.

Contact Zürich Arrival when advised by Tower

Initial climb clearance 5000'.

SID	RWY	ROUTING	GPS/FMS RNAV	REMARKS
TRA 2W	24	On track 238° to NY043, RT, via NY045 on track 003° to NY048, LT, via NY049 on track 297° to TINOX, LT, on track 251° to TRA. Climb with 4.3% (261 ft/NM) until passing 5400. Cross NY045 at or above 3600, NY049 at or above 5400 and TINOX at or above 6000	[A1800+] - NY043[K220-; R] - NY045[A3600+] - NY048[L] - NY049[A5400+] - TINOX[6000+; L] - TRA.	
TRA 2E	06	On track 058° to NY063, RT, via NY071 on track 305° to ENIBI, LT, on track 297° via NY049 to TINOX, LT, on track 251° to TRA. Cross NY049 at or above 5400 and TINOX at or above 6000.	[A1800+] - NY063[K220-; R] - NY071[R] - ENIBI[L] - NY049[A5400+] - TINOX[A6000+; L] - TRA.	

Revision: 2016-05-26 - Change: Minor