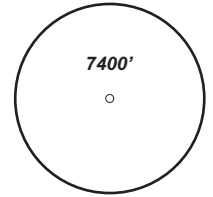


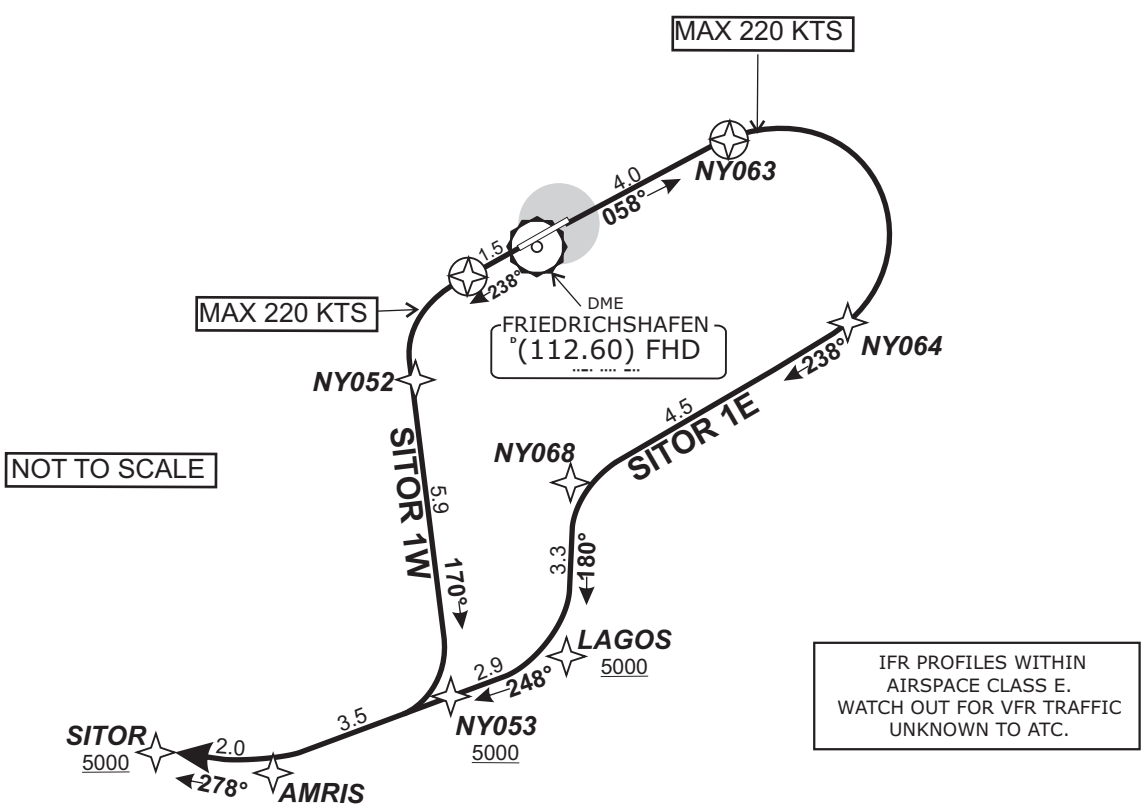
| | | | | |
|---|----------------|---------------------------------|--------------------------|-----------------------|
| TRANS LEVEL: BY ATC TRANS ALT: 5000' | ATIS 129.60 | FRIEDRICHSHAFEN Tower 120.07 | ZURICH Arrival 135.22 | SWISS Radar 128.05 |
|---|----------------|---------------------------------|--------------------------|-----------------------|

SITOR ONE WHISKEY - SITOR 1W
SITOR ONE ECHO - SITOR 1E



MSA 25 NM
from ARP
*German territory only

Do not use for real life navigation!



Contact Zürich Arrival when advised by Tower

Initial climb clearance 5000'.

| SID | RWY | ROUTING | GPS/FMS RNAV | REMARKS |
|-----------------|-----------|---|--|---------------------------|
| SITOR 1W | 24 | On track 238° to NY050, LT, via NY052 on track 170° to NY053, RT, on track 248° to AMRIS, RT, on track 278° to SITOR. Climb with 6.2% (377 ft/NM) until passing 5000. Cross NY053 and SITOR at or above 5000. | [A1800+] - NY050[K220-; L] - NY052 - NY053[A5000+; R] - AMRIS[R] - SITOR[A5000+]. | Only for flights to LSZR. |
| SITOR 1E | 06 | On track 058° to NY063, RT, via NY064 on track 238° to NY068, LT, on track 180° to LAGOS, RT, on track 248° to AMRIS, RT, on track 278° to SITOR | [A1800+] - NY063[K220-; R] - NY064 - NY068[L] - LAGOS[A5000+; R] - AMRIS[R] - SITOR[A5000+]. | Only for flights to LSZR. |

Revision: 2016-05-26 - Change: Minor