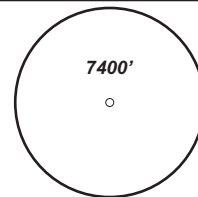
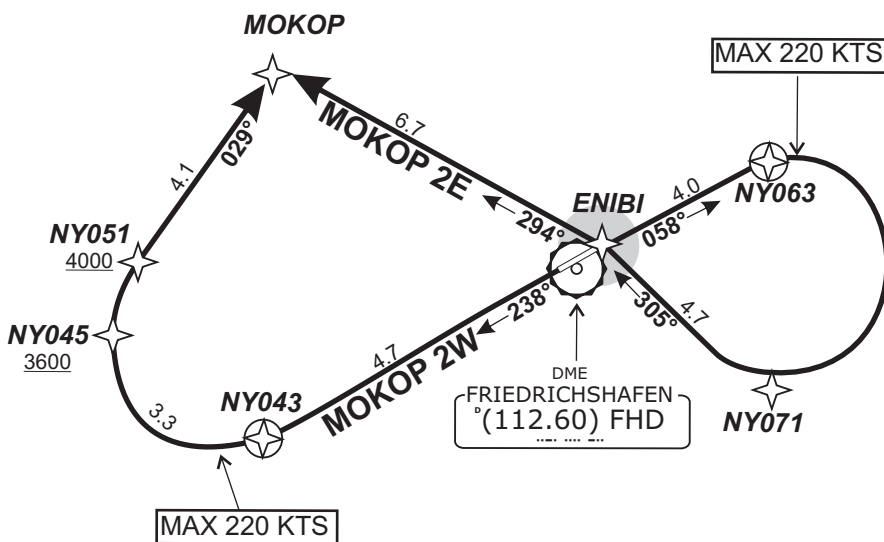


TRANS LEVEL: BY ATC TRANS ALT: 5000'	ATIS 129.60	FRIEDRICHSHAFEN Tower 120.07	ZURICH Arrival 135.22	SWISS Radar 128.05
---	----------------	---------------------------------	--------------------------	-----------------------

MOKOP TWO WHISKEY - MOKOP 2W
MOKOP TWO ECHO - MOKOP 2E



MSA 25 NM
from ARP
*German territory only



IFR PROFILES WITHIN
AIRSPACE CLASS E.
WATCH OUT FOR VFR TRAFFIC
UNKNOWN TO ATC.

Contact Zürich Arrival when advised by Tower

Initial climb clearance 5000'.

SID	RWY	ROUTING	GPS/FMS RNAV	REMARKS
MOKOP 2W	24	On track 238° to NY043, RT, via NY051 on track 029° to MOKOP. Climb with 5.8% (351 ft/NM) until passing 4000. Cross NY051 at or above 4000.	[A1800+] - NY043[K220-; R] - NY051[A4000+] - MOKOP.	
MOKOP 2E	06	On track 058° to NY063, RT, via NY071 on track 305° to ENIBI, LT, on track 294° to MOKOP.	[A1800+] - NY063[K220-; R] - NY071[R] - ENIBI[L] - MOKOP.	

Revision: 2016-05-26 - MOKOP designator, depiction