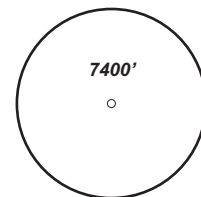
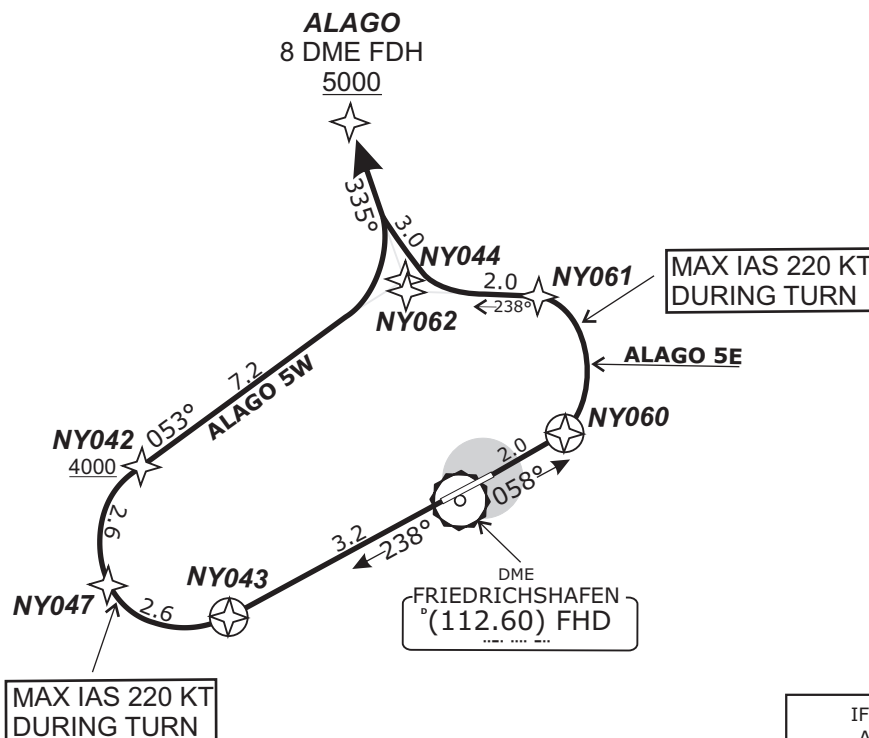


TRANS LEVEL: BY ATC TRANS ALT: 5000'	ATIS 129.60	FRIEDRICHSHAFEN Tower 120.07	ZURICH Arrival 135.22	SWISS Radar 128.05
---	----------------	---------------------------------	--------------------------	-----------------------

ALAGO FIVE WHISKEY - ALAGO 5W
ALAGO FIVE ECHO - ALAGO 5E



MSA 25 NM
from ARP
*German territory only



IFR PROFILES WITHIN
AIRSPACE CLASS E.
WATCH OUT FOR VFR TRAFFIC
UNKNOWN TO ATC.

Do not use for real life navigation!

Contact Zürich Arrival when advised by Tower **Initial climb clearance 5000'.**

SID	RWY	ROUTING	GPS/FMS RNAV	REMARKS
ALAGO 5W	24	On track 238° to NY043, RT, via NY047 and NY042 on track 053° to NY044, LT, on track 335° to ALAGO. Climb with 4.3% (261 ft/NM) until passing 4000. Cross NY042 at or above 4000.	[A1800+] - NY043[K220-; R] - NY047[R] - NY042[A4000+] - NY044[L] - ALAGO	
ALAGO 5E	06	On track 058° to NY060, LT, via NY061 on track 268° to NY062, RT, on track 335° to ALAGO. Climb with 5.4% (328 ft/NM) until passing 5000. Cross ALAGO at or above 5000.	[A1800+] - NY060[K220-; L] - NY061 - NY062[R] - ALAGO[A5000+].	