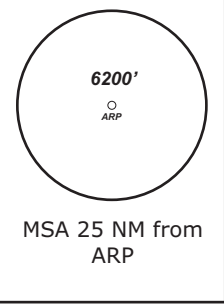


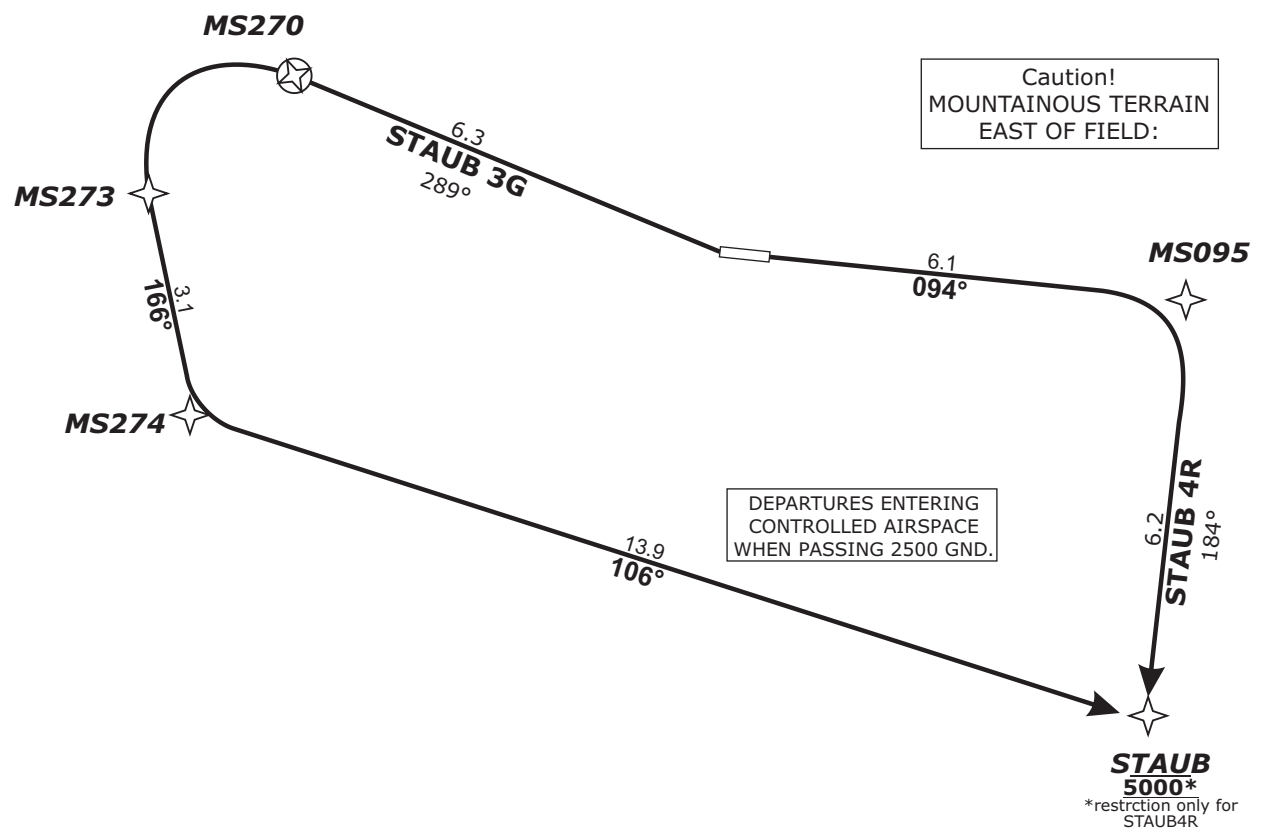
STRAUBING ATIS 135.52	STRAUBING Info 127.15	MÜNCHEN Radar 129.52	MÜNCHEN Radar 124.05
--------------------------	--------------------------	-------------------------	-------------------------

TRANS LEVEL: BY ATC      TRANS ALT: 5000'      APT Elevation: 1054'

**STAUB 4R - STAUB FOUR ROMEO** (12.3 NM)  
**STAUB 3G - STAUB THREE GOLF** (23.3 NM)



BEARINGS AND TRACKS ARE MAGNETIC.  
ALTITUDES IN FEET MSL



Caution!  
MOUNTAINOUS TERRAIN  
EAST OF FIELD:

DEPARTURES ENTERING  
CONTROLLED AIRSPACE  
WHEN PASSING 2500 GND.

Procedure not to be used  
during activity of NLFS

DEPARTURES ENTERING  
CONTROLLED AIRSPACE  
WHEN PASSING 1000 AGL.

**Do not use for real life navigation!**

Revision: 2014-12-11 - Change: note modified

**Report passing 3600 to Straubing Info and contact München Radar**      **Initial climb 5000'**

SID	RWY	ROUTING	GPS/FMS RNAV	REMARKS
<b>STAUB 4R</b>	<b>09</b>	Climb on track 094° to MS095; RT, on track 184° to STAUB, cross STAUB at 5000.	[A1500+] - <u>MS095[R]</u> - STAUB[A5000].	PDG 5.6% (340ft/NM) due to MEA.
<b>STAUB 3G</b>	<b>27</b>	Climb on track 289° to MS270; LT, via MS273 on track 166° to MS274, LT, on track 106° to STAUB.	[A1500+] - <u>MS270[L]</u> - MS273 - <u>MS274[L]</u> - STAUB.	