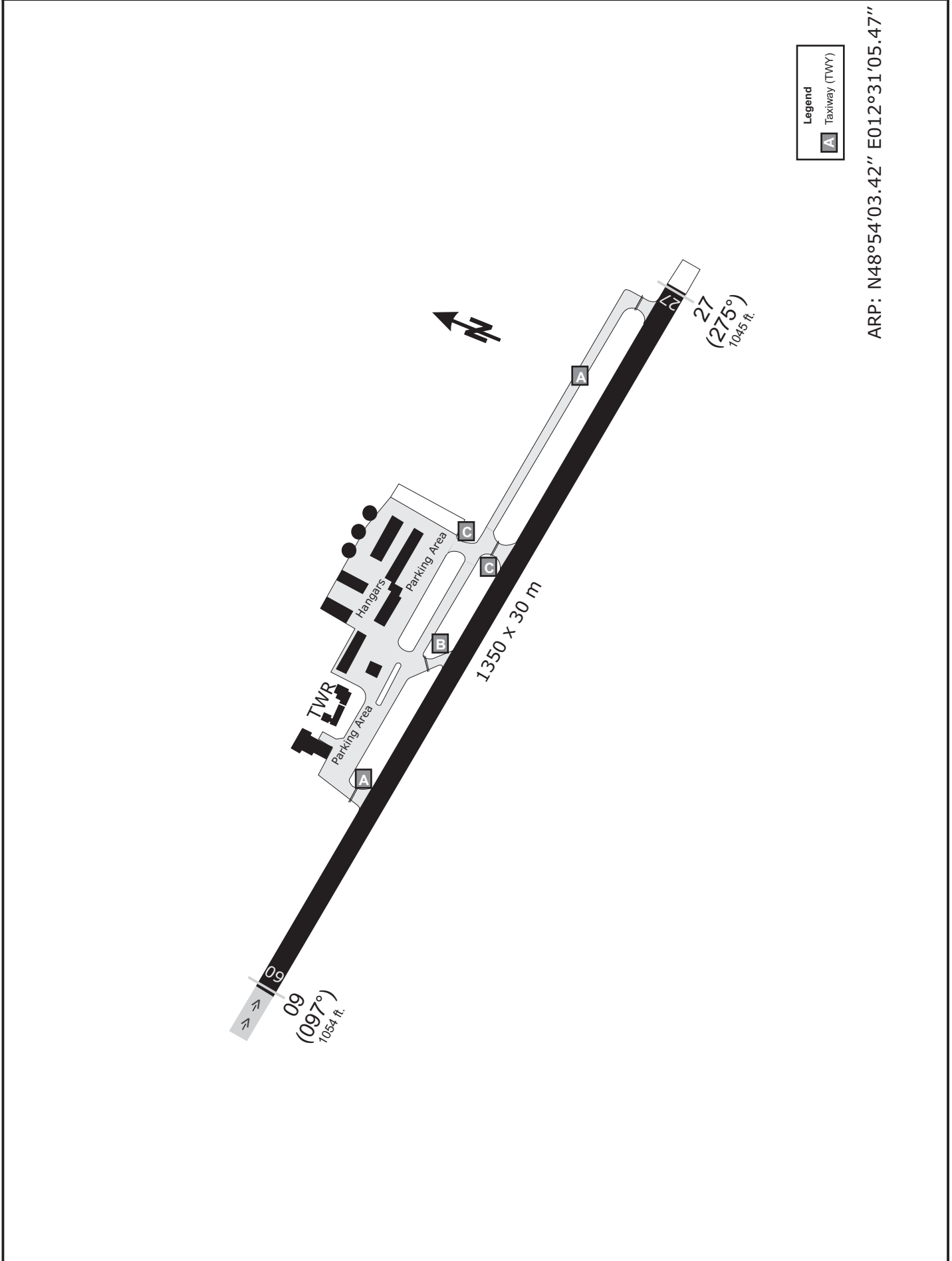


STRAUBING ATIS 135.52	STRAUBING Info 127.15	MÜNCHEN Radar 129.52	MÜNCHEN Radar 124.05
--------------------------	--------------------------	-------------------------	-------------------------

TRANS LEVEL: BY ATC                      TRANS ALT: 5000'                      APT Elevation: 1054'

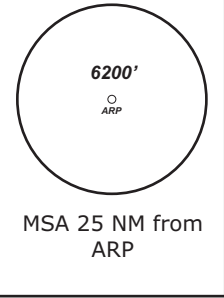


**Do not use for real life navigation!**

STRAUBING ATIS 135.52	STRAUBING Info 127.15	MÜNCHEN Radar 129.52	MÜNCHEN Radar 124.05
--------------------------	--------------------------	-------------------------	-------------------------

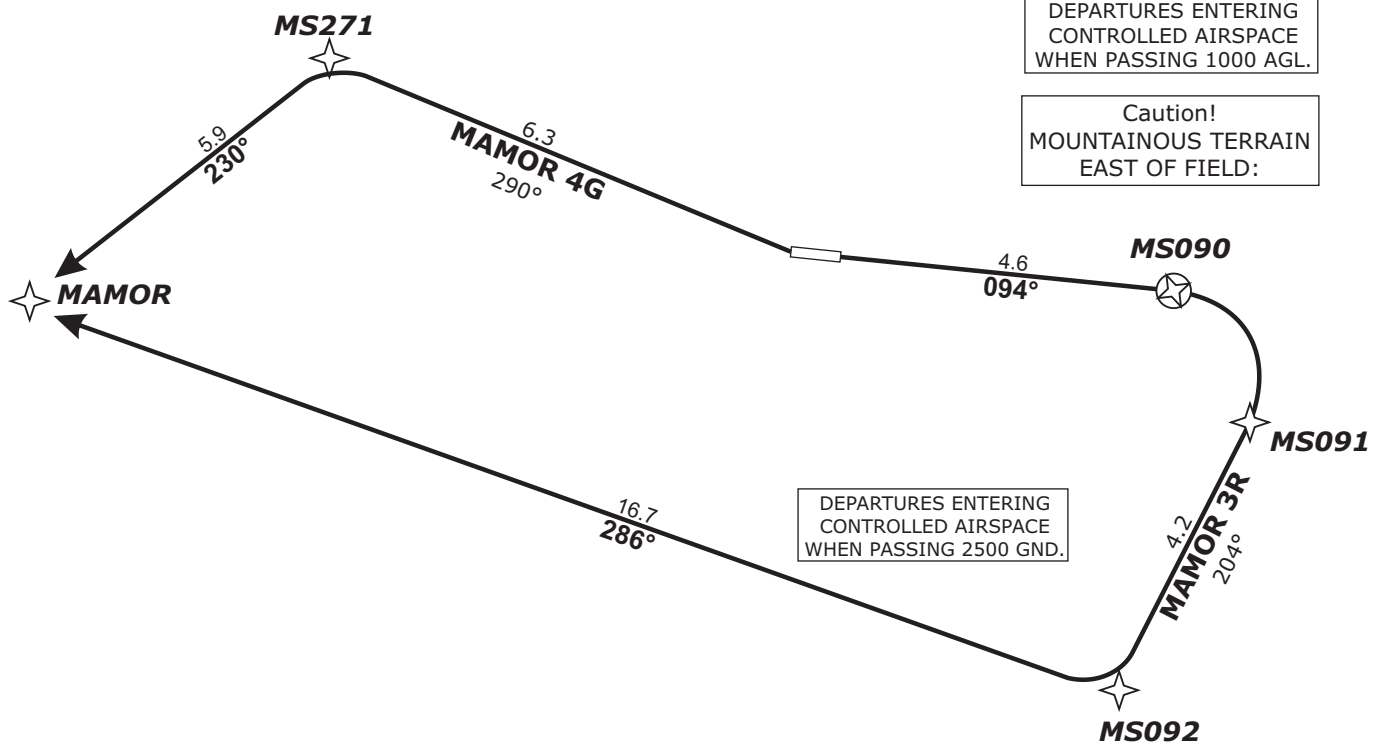
TRANS LEVEL: BY ATC      TRANS ALT: 5000'      APT Elevation: 1054'

**MAMOR 3R - MAMOR THREE ROMEO (25.5 NM)**  
**MAMOR 4G - MAMOR FOUR GOLF (12.2 NM)**



BEARINGS AND TRACKS ARE MAGNETIC.  
 ALTITUDES IN FEET MSL

DEPARTURES ENTERING CONTROLLED AIRSPACE WHEN PASSING 1000 AGL.  
 Caution! MOUNTAINOUS TERRAIN EAST OF FIELD:



DEPARTURES ENTERING CONTROLLED AIRSPACE WHEN PASSING 2500 GND.

Procedure not to be used during activity of NLFS

Do not use for real life navigation!

Revision: 2014-12-11 - Change: note modified

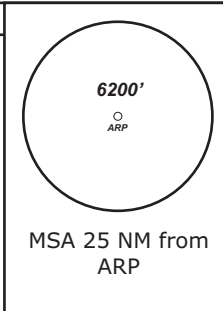
**Report passing 3600 to Straubing Info and contact München Radar      Initial climb 5000'**

SID	RWY	ROUTING	GPS/FMS RNAV	REMARKS
<b>MAMOR 3R</b>	<b>09</b>	Climb on track 094° to MS090; RT, via MS091 on track 204° to MS092, RT, on track 286° to MAMOR.	[A1500+] - MS090[R]- MS091 - MS092[R] - MAMOR.	
<b>MAMOR 4G</b>	<b>27</b>	Climb on track 290° to MS271; LT, on track 230° to MAMOR.	[A1500+] - MS271[L] - MAMOR.	PDG 5.0% (305ft/NM) due to MEA

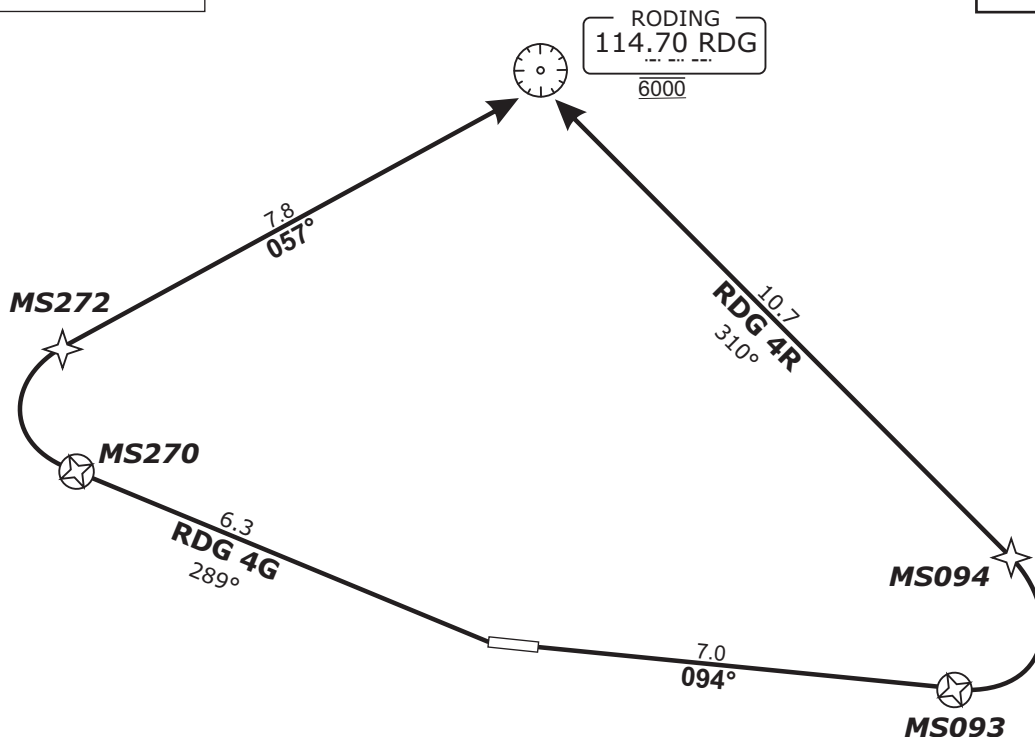
STRAUBING ATIS 135.52	STRAUBING Info 127.15	MÜNCHEN Radar 129.52	MÜNCHEN Radar 124.05
--------------------------	--------------------------	-------------------------	-------------------------

TRANS LEVEL: BY ATC      TRANS ALT: 5000'      APT Elevation: 1054'

**RDG 4R - RODING FOUR ROMEO** (17.7 NM)  
**RDG 4G - RODING FOUR GOLF** (14.1 NM)



BEARINGS AND TRACKS ARE MAGNETIC.  
ALTITUDES IN FEET MSL



DEPARTURES ENTERING CONTROLLED AIRSPACE WHEN PASSING 1000 AGL.

Caution!  
MOUNTAINOUS TERRAIN EAST OF FIELD:

Procedure not to be used during activity of NLFS

Do not use for real life navigation!

Revision: 2014-12-11 - Change: note modified

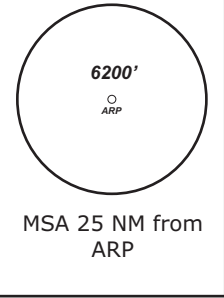
**Report passing 3600 to Straubing Info and contact München Radar      Initial climb 6000'**

SID	RWY	ROUTING	GPS/FMS RNAV	REMARKS
<b>RDG 4R</b>	<b>09</b>	Climb on track 095° to MS093; LT, via MS094 on track 311° to RDG. Cross RDG at 6000.	[A1500+] - <u>MS093[L]</u> - MS094 - RDG[A6000].	PDG 4.0% (240ft/NM) due to MEA
<b>RDG 4G</b>	<b>27</b>	Climb on track 289° to MS270; RT, via MS270 on track 057° to RDG, cross RDG at 6000.	[A1500+] - <u>MS270[R]</u> - MS272 - RDG[A6000].	PDG 5.0% (305ft/NM) due to MEA

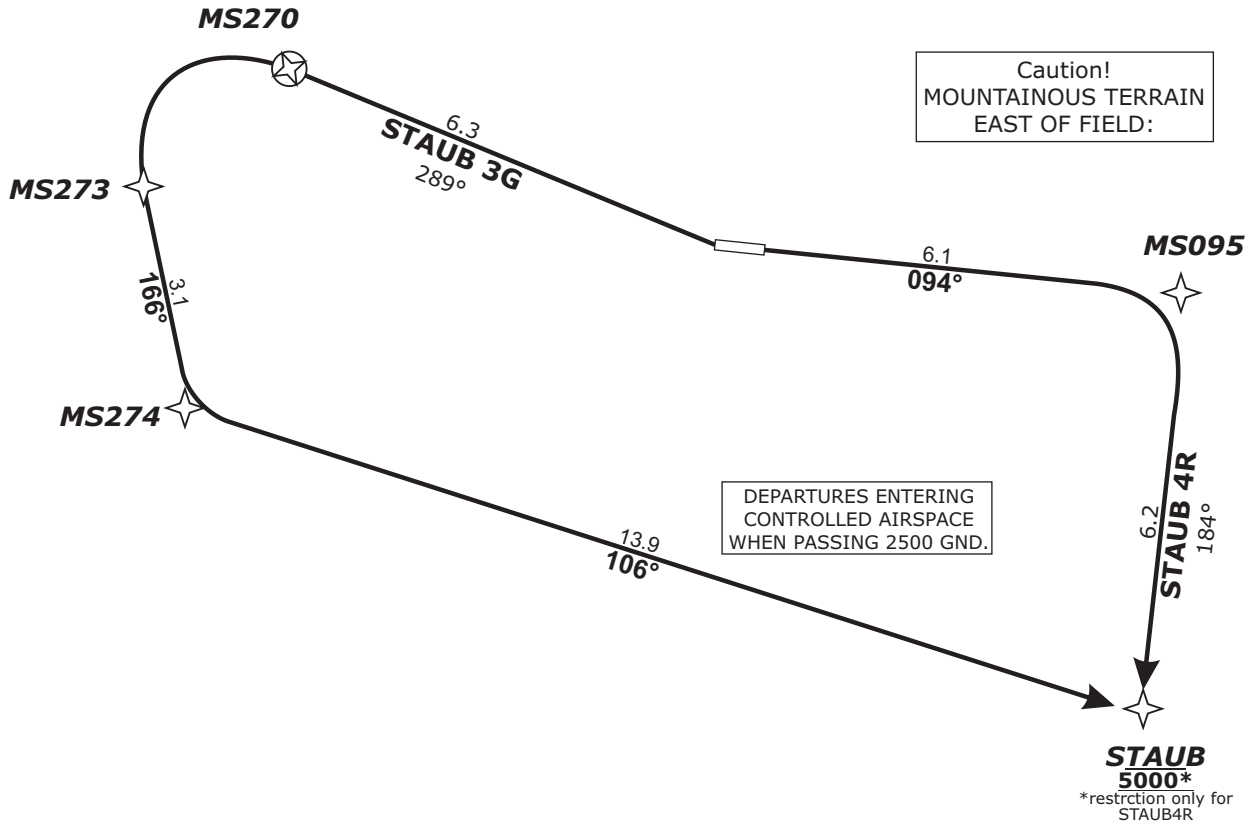
STRAUBING ATIS 135.52	STRAUBING Info 127.15	MÜNCHEN Radar 129.52	MÜNCHEN Radar 124.05
--------------------------	--------------------------	-------------------------	-------------------------

TRANS LEVEL: BY ATC      TRANS ALT: 5000'      APT Elevation: 1054'

**STAUB 4R - STAUB FOUR ROMEO** (12.3 NM)  
**STAUB 3G - STAUB THREE GOLF** (23.3 NM)



BEARINGS AND TRACKS ARE MAGNETIC.  
 ALTITUDES IN FEET MSL



Caution!  
 MOUNTAINOUS TERRAIN  
 EAST OF FIELD:

DEPARTURES ENTERING  
 CONTROLLED AIRSPACE  
 WHEN PASSING 2500 GND.

Procedure not to be used  
 during activity of NLFS

DEPARTURES ENTERING  
 CONTROLLED AIRSPACE  
 WHEN PASSING 1000 AGL.

Do not use for real life navigation!

Revision: 2014-12-11 - Change: note modified

**Report passing 3600 to Straubing Info and contact München Radar**      **Initial climb 5000'**

SID	RWY	ROUTING	GPS/FMS RNAV	REMARKS
<b>STAUB 4R</b>	<b>09</b>	Climb on track 094° to MS095; RT, on track 184° to STAUB, cross STAUB at 5000.	[A1500+] - <u>MS095[R]</u> - STAUB[A5000].	PDG 5.6% (340ft/NM) due to MEA.
<b>STAUB 3G</b>	<b>27</b>	Climb on track 289° to MS270; LT, via MS273 on track 166° to MS274, LT, on track 106° to STAUB.	[A1500+] - <u>MS270[L]</u> - MS273 - <u>MS274[L]</u> - STAUB.	

