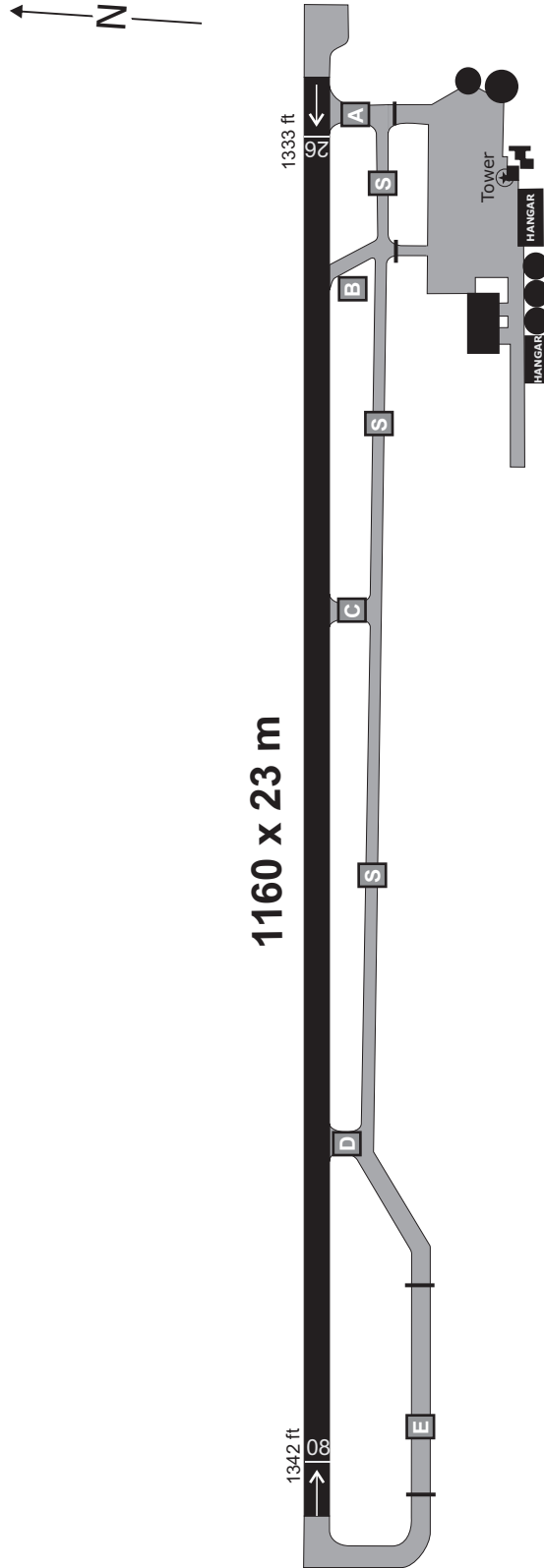


TRANS LEVEL: BY ATC TRANS ALT: 5000'	EGGENFELDEN ATIS 125.07	EGGENFELDEN INFO 120.30	MÜNCHEN Radar 124.05	MÜNCHEN Radar 129.55
---	----------------------------	----------------------------	-------------------------	-------------------------



Do not use for real life navigation!

TRANS LEVEL: BY ATC TRANS ALT: 5000'	EGGENFELDEN ATIS 125.07	EGGENFELDEN INFO 120.30	MÜNCHEN Radar 124.05	MÜNCHEN Radar 129.55
---	----------------------------	----------------------------	-------------------------	-------------------------

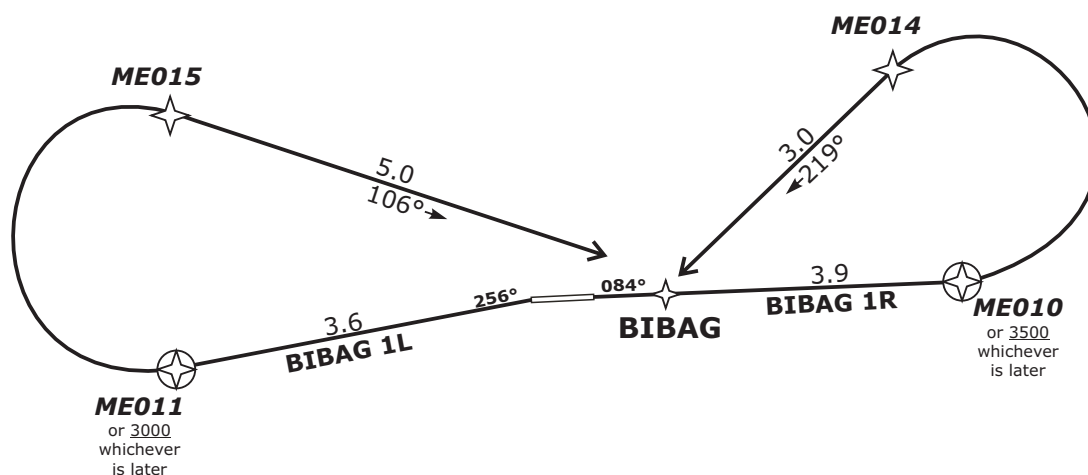
Apt Elev: 1342' Trans level: By ATC Trans alt: 5000'

3600'
(*)
○

MSA 25 NM from
ARP

(*) German territory only

BIBAG 1L - BIBAG ONE LIMA
BIBAG 1R - BIBAG ONE ROMEO



DEPARTURES ENTERING
CONTROLLED AIRSPACE
WHEN PASSING 1000 AGL.

**REPORT PASSING 3800 TO EGGENFELDEN INFO
AND CONTACT MÜNCHEN RADAR**

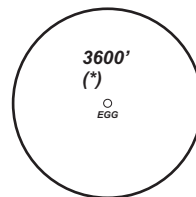
Initial climb clearance 5000'.

SID	RWY	ROUTING	GPS/FMS RNAV	REMARKS
BIBAG 1R	08	On track 084° to ME010 or 3500, whichever is later, LT via ME014 on track 219° to BIBAG	[A1800+] - ME010 - [A3500+; L] - ME014 - BIBAG.	1. Altitude restriction at BIBAG due to airspace structure
BIBAG 1L	26	On track 256° to ME011 or 3000, whichever is later, RT via ME015 on track 106° to BIBAG	[A1800+] - ME011 - [A3000+; R] - ME015 - BIBAG.	1. Altitude restriction at BIBAG due to airspace structure. 2. Procedure not to be used during activity of NLFs.

Do not use for real life navigation!

Revision: 2014-12-11 - Change: note modified

		EGGENFELDEN ATIS 125.07	EGGENFELDEN INFO 120.30	MÜNCHEN Radar 124.05	MÜNCHEN Radar 129.55
NDB EGG 393.0	VOR/DME END 115.40	Final Apch Course 264°	FAF EKLEN 6.8 DME END 3500'	MDA(H) 1920' (580)	Apt.Elev. 1342'



MSA 25 NM from EGG NDB
(*) German territory only

MISSED APCH: Climb straight ahead to 4.0 DME END or 3000, RT to EGG NDB / BIBAG climbing to 5000.

Alt Set: hPa (IN on req)

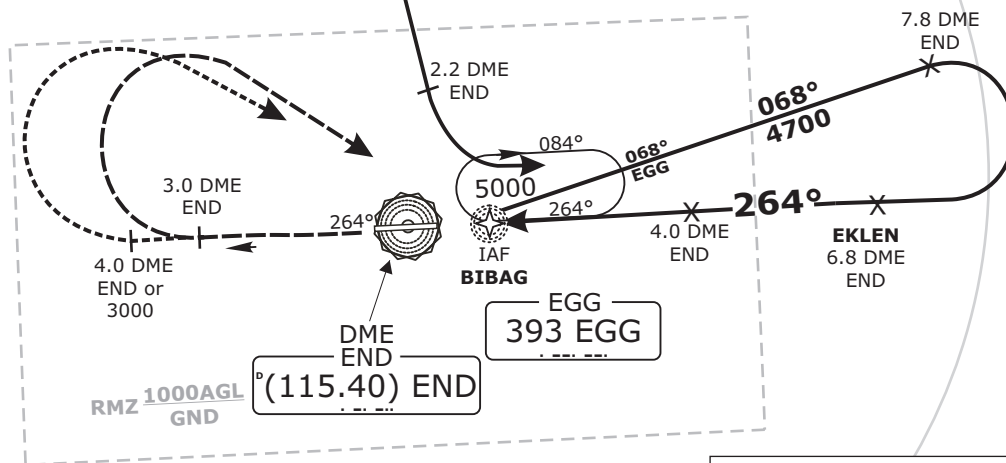
Trans level: By ATC

Trans alt: 5000'

BEARINGS ARE MAGNETIC.
ALTITUDES IN FEET MSL

**DME
REQUIRED.**

FROM STAUB INT:
LT AT 2.2 DME END TO
INTERCEPT TRACK 068° EGG
FOR STANDARD APCH:



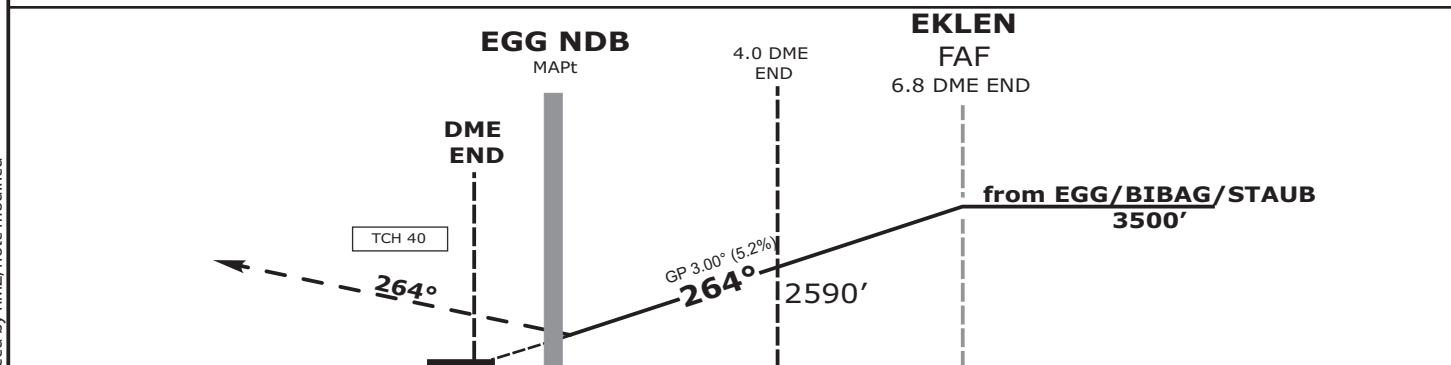
APCH ONLY AUTHORIZED
WHEN EDME QNH
IS AVAILABLE

APCH RWY 08:
EXECUTE APCH RWY 26
FOLLOWED BY CIRCLING
SOUTH OF AERODROME.

PROCEDURE NOT TO BE
USED DURING ACTIVITY
OF NLFS

ARRIVALS LEAVING
CONTROLLED AIRSPACE
WHEN PASSING 1000 AGL.

Do not use for real life navigation!



OCA (OCH)	A	B				DME END	2	3	4	5	6					
NDB-DME (GPS)	1920'	1920'				DIST THR	1.8	2.8	3.8	4.8	5.8					
	(580)	(580)				ALTITUDE	1950'	2270'	2590'	2910'	3220'					
						Timing not authorized for defining the MAPt.										
						GS	kt				80	100	120	140		
CIRCLING*	1920'	2010'				D4.0 END - EGG NDB	MIN:SEC		2:15	1:48	1:30	1:17				
	(580)	(670)				Rate of Descent (5.2%)	ft/MIN		420	530	640	740				

*SOUTH OF AERODROME ONLY

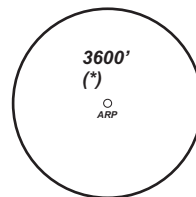
	EGGENFELDEN ATIS 125.07	EGGENFELDEN INFO 120.30	MÜNCHEN Radar 124.05	MÜNCHEN Radar 129.55
--	----------------------------	----------------------------	-------------------------	-------------------------

MISSED APCH: On track 264° to ME023 climbing to 3500', RT, via ME024 on track 116° to BIBAG climbing to 5000'.
RNAV: ME023 - [3500,R] - ME024 - BIBAG[A5000]

Final
Apch Crs
264°

MDA(H)
*Refer to
Minimums*

Apt.Elev. 1342'



Alt Set: hPa (IN on req)

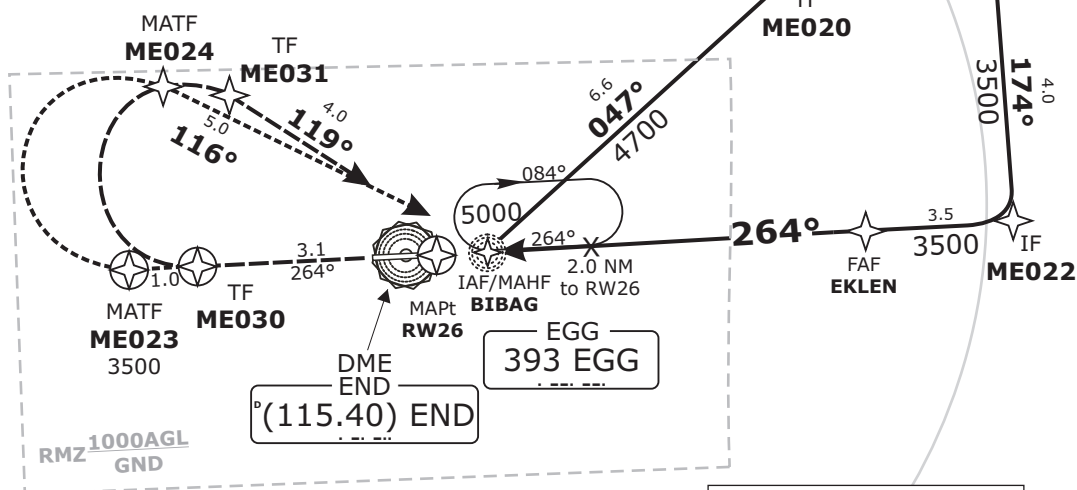
Trans level: By ATC

Trans alt: 5000'

BEARINGS ARE MAGNETIC.
ALTITUDES IN FEET MSL

BARO-VNAV OPERATIONS
not authorized below -15°C.

**DME
REQUIRED.**



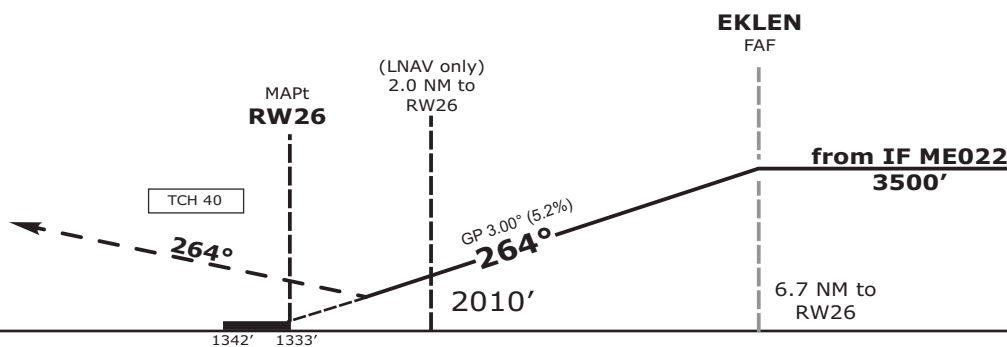
APCH ONLY AUTHORIZED
WHEN EDME QNH
IS AVAILABLE

APCH RWY 08:
EXECUTE APCH RWY 26
FOLLOWED BY CIRCLING
SOUTH OF AERODROME.

PROCEDURE NOT TO BE
USED DURING ACTIVITY
OF NLSF

ARRIVALS LEAVING
CONTROLLED AIRSPACE
WHEN PASSING 1000 AGL.

Do not use for real life navigation!



OCA (OCH)		A	B									
LNAV		1900'	1900'									
		(560)	(560)									
LNAV/VNAV		1880'	1880'									
		(550)	(550)									
CIRCLING*		1920'	2010'									
		(580)	(670)									
				DIST THR / RW26	2	3	4	5	6			
				ALTITUDE	2010'	2330'	2650'	2970'	3290'			
				Timing not authorized for defining the MAPt.								
				GS	kt				80	100	120	140
				EKLEN - RW26 (6.7 NM)	MIN:SEC		5:02	4:01	3:21	2:52		
				Rate of Descent (5.2%)	ft/MIN		420	530	640	740		

*SOUTH OF AERODROME ONLY