

TRANS LEVEL: BY ATC
TRANS ALT: 5000'

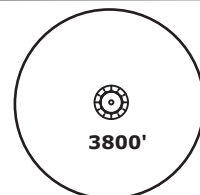
NÜRNBERG ATIS
123.07

NÜRNBERG Ground
118.10

NÜRNBERG Tower
118.30

MÜNCHEN Radar
129.52

RODIS 3K - RODIS THREE KILO [RODI3K] (53.7 NM)
RODIS 4M - RODIS FOUR MIKE [RODI4M] (33.5 NM)

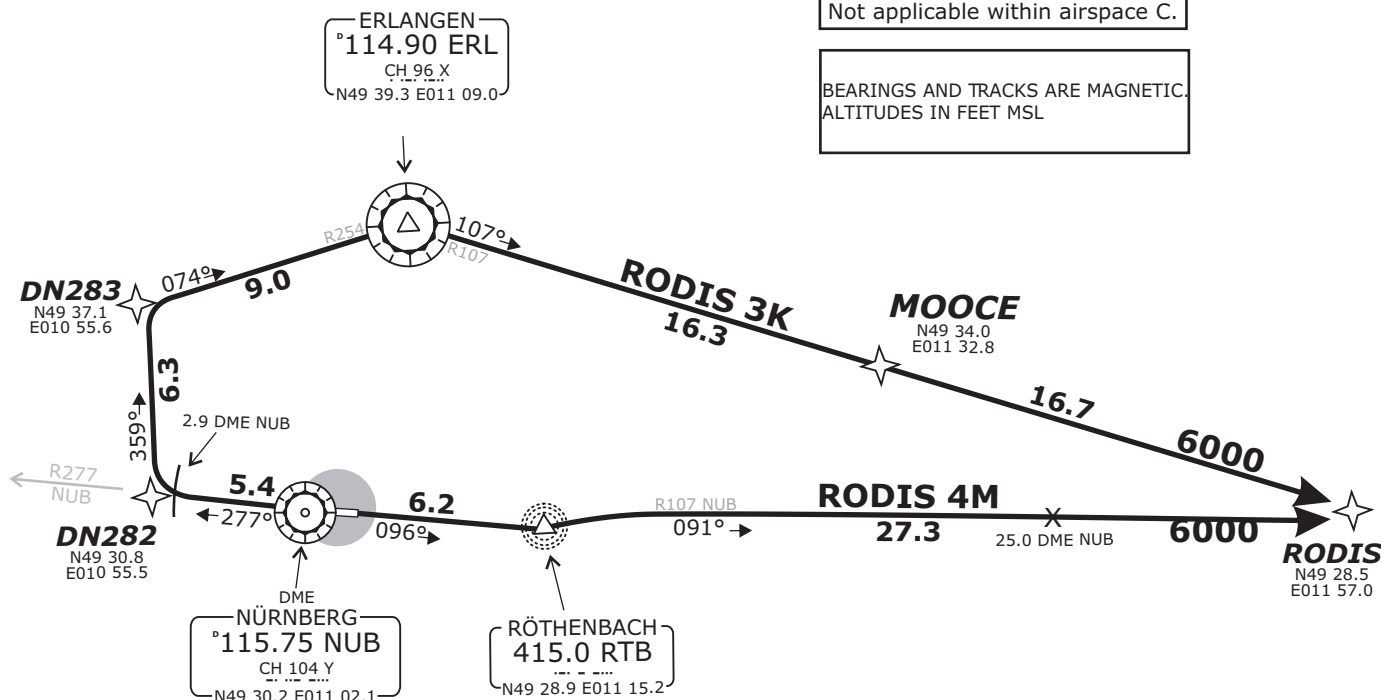


MSA 25 NM from NUB VOR

PARTS OF IFR PROFILES WITHIN
AIRSPACE CLASS E.
WATCH OUT FOR VFR TRAFFIC
UNKNOWN TO ATC.

SPEED RESTRICTION
MAX 250 KTS below FL100
or as by ATC.
Not applicable within airspace C.

BEARINGS AND TRACKS ARE MAGNETIC.
ALTITUDES IN FEET MSL



Do not use for real life navigation!

Pilots of GPS/FMS-RNAV-equipped aircraft shall, if possible, use the supplementary GPS/FMS RNAV procedures which are described following the text "GPS / FMS RNAV" and charted. The ground-based navigation aids required for the use of the respective conventional flight procedure and the associated aircraft equipment shall remain in operation at all times

Contact München Radar immediately after take-off!

Initial climb clearance FL70.

SID	RWY	ROUTING	GPS/FMS RNAV	REMARKS
RODIS 3K	28	On R277° NUB to 2.9 DME NUB; RT, on track 359° to intercept R254 ERL, on R254 ERL to ERL; on R107 ERL via MOOCE to RODIS	[A1500+] - DN282[R] - DN283[R] - ERL[R] - MOOCE - RODIS	Only available for flights with DEST EDMM, LKPR and for flights continue via (U)L604.
RODIS 4M	10	Direct to RTB; LT, to intercept R091 NUB to RODIS.	[A1500+] - RTB[L] - RODIS.	Only available for flights with DEST EDMM, LKPR and for flights continue via (U)L604.

Revision: 2016-06-23 - Change: minor