

TRANS LEVEL: BY ATC
TRANS ALT: 5000'

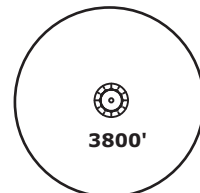
NÜRNBERG ATIS
123.07

NÜRNBERG Ground
118.10

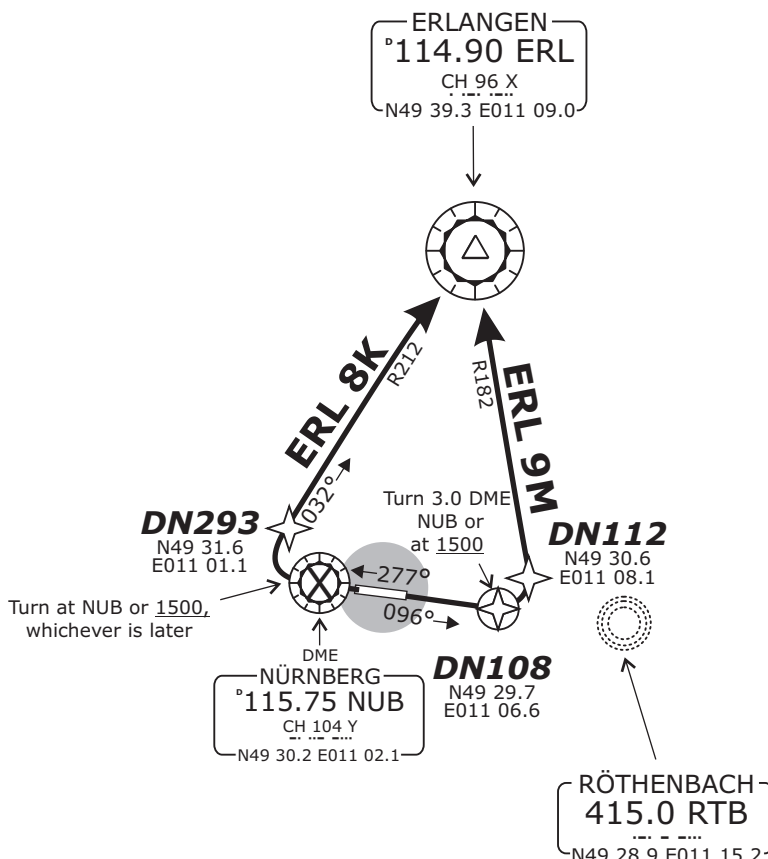
NÜRNBERG Tower
118.30

MÜNCHEN Radar
129.52

ERL 8K - ERLANGEN EIGHT KILO [ERL8K] (10.3 NM)
ERL 9M - ERLANGEN NINER MIKE [ERL9M] (9.3 NM)



MSA 25 NM from NUB VOR



BEARINGS AND TRACKS ARE MAGNETIC.
ALTITUDES IN FEET MSL

PARTS OF IFR PROFILES WITHIN
AIRSPACE CLASS E.
WATCH OUT FOR VFR TRAFFIC
UNKNOWN TO ATC.

SPEED RESTRICTION
MAX 250 KTS below FL100
or as by ATC.
Not applicable within airspace C.

Pilots of GPS/FMS-RNAV-equipped aircraft shall, if possible, use the supplementary GPS/FMS RNAV procedures which are described following the text "GPS / FMS RNAV," and charted. The ground-based navigation aids required for the use of the respective conventional flight procedure and the associated aircraft equipment shall remain in operation at all times

Remain with Nürnberg Tower 118.300!

Initial climb clearance FL70.

SID	RWY	ROUTING	GPS/FMS RNAV	REMARKS
ERL 8K	28	Direct to NUB or 1500, whichever is later; RT, on R212 ERL to ERL.	NUB - [A1500+;R] - DN293 - ERL.	1. For local IFR training flights at EDDN, prop-type aircraft up to 5.7 t MTOW only. 2. Contact München Radar when advised by Tower.
ERL 9M	10	On track 096° RTB to 3.0 DME NUB or 1500, whichever is later, LT, on R182 ERL to ERL.	DN108[A1500+;L] - DN112 - ERL.	1. For local IFR training flights at EDDN, prop-type aircraft up to 5.7 t MTOW only. 2. Contact München Radar when advised by Tower.

Do not use for real life navigation!