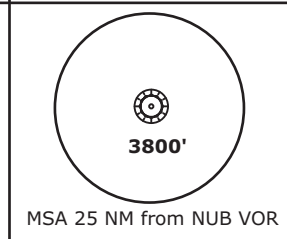
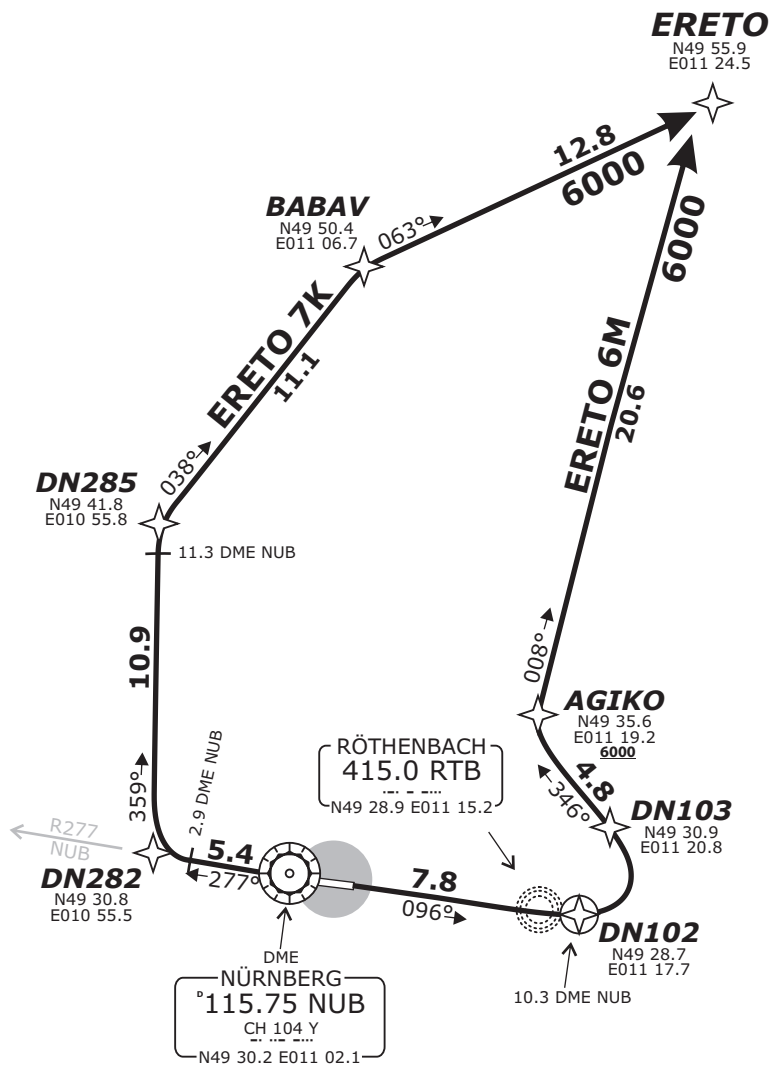


TRANS LEVEL: BY ATC TRANS ALT: 5000'	NÜRNBERG ATIS 123.07	NÜRNBERG Ground 118.10	NÜRNBERG Tower 118.30	MÜNCHEN Radar 129.52
---	-------------------------	---------------------------	--------------------------	-------------------------

ERETO 7K - ERETO SEVEN KILO [ERET7K] (40.2 NM)
ERETO 6M - ERETO SIX MIKE [ERET6M] (33.2 NM)



Do not use for real life navigation!



BEARINGS AND TRACKS ARE MAGNETIC.
ALTITUDES IN FEET MSL

SPEED RESTRICTION
MAX 250 KTS below FL100
or as by ATC.
Not applicable within airspace C.

PARTS OF IFR PROFILES WITHIN
AIRSPACE CLASS E.
WATCH OUT FOR VFR TRAFFIC
UNKNOWN TO ATC.

Pilots of GPS/FMS-RNAV-equipped aircraft shall, if possible, use the supplementary GPS/FMS RNAV procedures which are described following the text "GPS / FMS RNAV:" and charted. The ground-based navigation aids required for the use of the respective conventional flight procedure and the associated aircraft equipment shall remain in operation at all times

Contact München Radar immediately after take-off! **Initial climb clearance FL70.**

SID	RWY	ROUTING	GPS/FMS RNAV	REMARKS
ERETO 7K	28	On R277 NUB to 2.9 DME NUB, RT, on track 359° to 11.3 DME NUB, RT, on track 038° to BABAV, on track 063° to ERETO.	[A1500+] - DN282[R] - DN285[R] - BABAV[R] - ERETO.	After BABAV BRNAV equipment necessary.
ERETO 6M	10	On track 096° via RTB to 10.3 DME NUB, LT, via DN103 on track 346° to AGIKO, RT, on track 008° to ERETO. Cross 10.3 DME NUB at 3200 or above and AGIKO at 6000 or above.	[A1500+] - RTB - DN102[L] - DN103 - AGIKO[R] - ERETO.	1. PDG 5.0% (304 ft/NM) or more until passing 6000 due to airspace structure and glider activity. If unable to comply, inform ATC. 2. After 10.3 DME NUB BRNAV equipment necessary.

Revision: 2016-06-23 - Change: designer