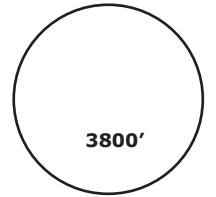
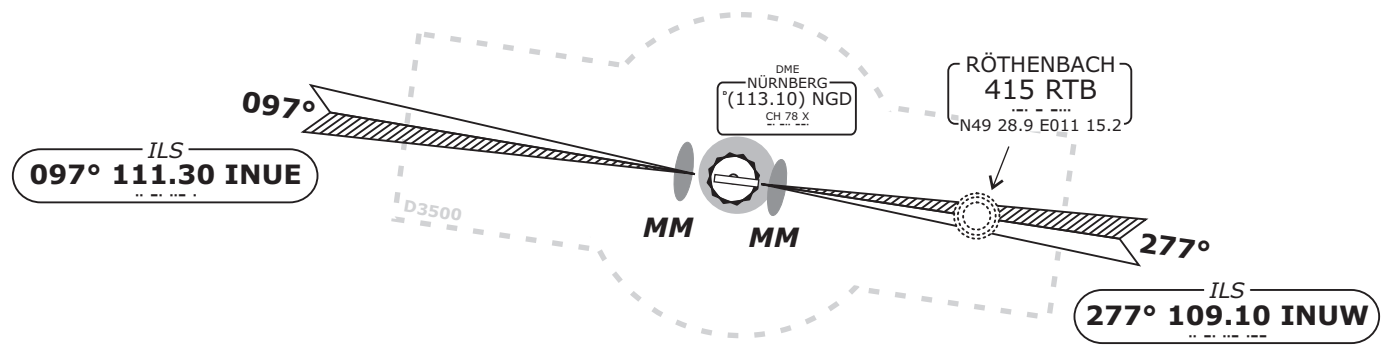


NÜRNBERG ATIS 123.07	MÜNCHEN Radar 129.52	NÜRNBERG Director 119.47	NÜRNBERG Tower 118.30	NÜRNBERG Ground 118.10
Apt.Elev. 1046' Rwy 10 Elev. 1022' Rwy 28 Elev. 1046'	RADAR	Final Apch Course By ATC	Minimum Alt See table below	DA(H) Refer to Minimums
MISSED APCH:	Climb straight ahead to 5000'.			
Apt Elev: 38hPa		Trans level: By ATC		Trans alt: 5000'



Do not use for real life navigation!



BEARINGS AND TRACKS ARE MAGNETIC.
ALTITUDES IN FEET MSL

RADAR FIX	10.0	9.0	8.0	7.0	6.0	5.0	4.0	3.0	2.0
ALTITUDE	4100'	3800'	3500'	3200'	2900'	2600'	2300'	2000'	1700' (28) 1680' (10)
Minimum Alt/NM	10.0 FAF	5.0							
SRE 10, SRE 28	4100'	2400'							
MAPt: 0nm THR (28/10)									
GS	kts	70	90	100	120	140	160		
Rate of descent (2.80°)	ft/MIN	347	447	496	595	695	794		

STRAIGHT-IN LANDING

SRE 10 DA(H) 1580' (558')		SRE 28 DA(H) 1670' (624')	
ALS out		ALS out	
A			
B			
C	CMV 2100 m	CMV 2500 m	CMV 2200 m
D			CMV 2900 m

Revision: 2013-05-30 - Change: MSA