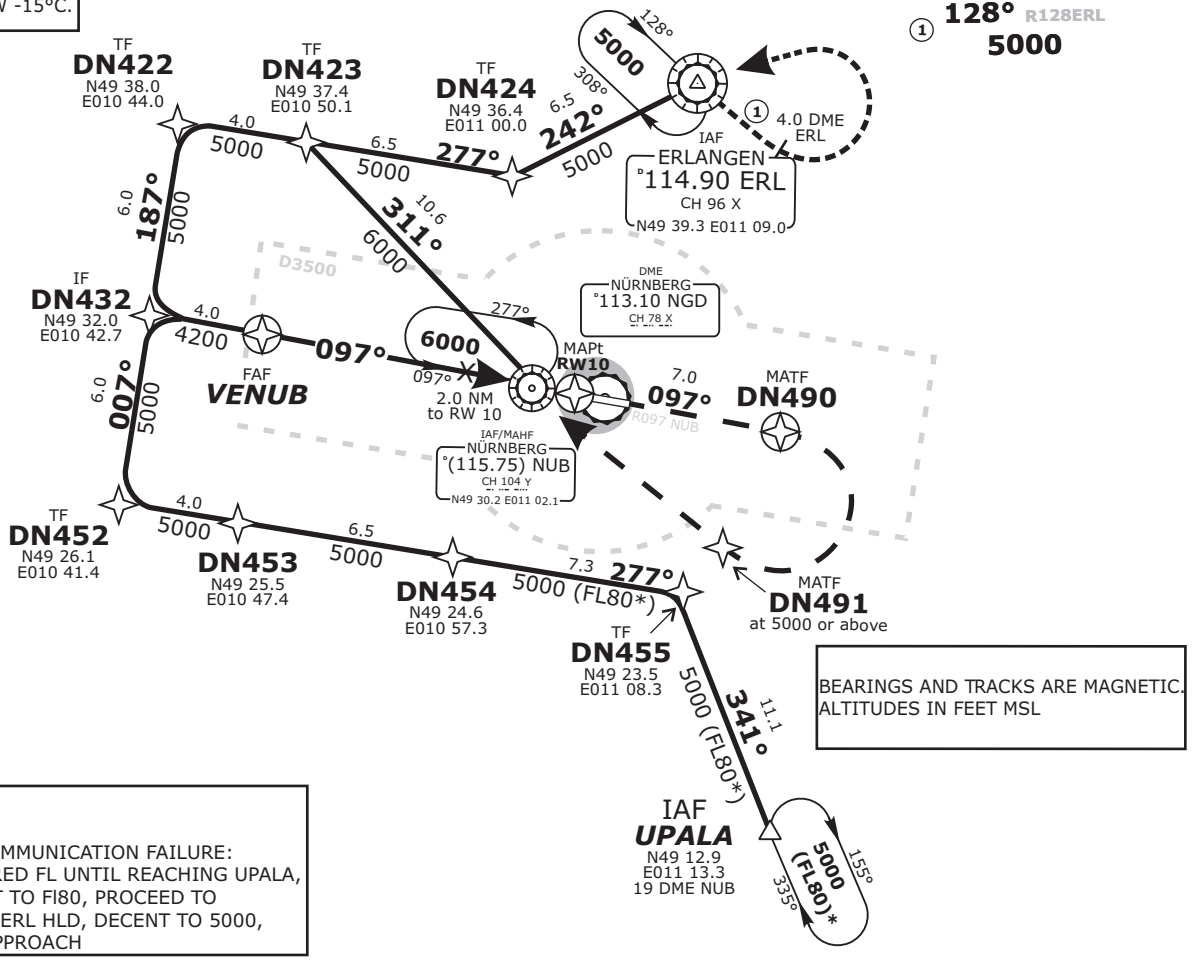
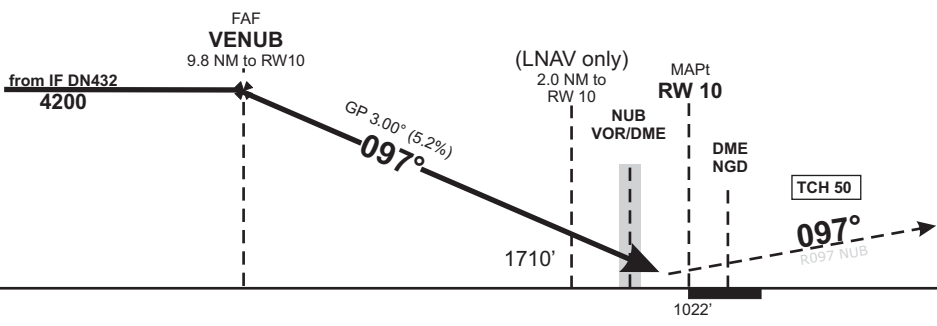


TRANS LEVEL: BY ATC TRANS ALT: 5000'		NÜRNBERG ATIS 123.07		NÜRNBERG Ground 118.10		NÜRNBERG Tower 118.30		MÜNCHEN Radar 129.52	
DME NGD <b>113.10</b>	DME NUB <b>115.75</b>	Final Apch Course <b>097°</b>	FAF VENUB <b>4200'</b>		MDA(H) <i>Refer to Minimums</i>		Apt.Elev. 1046' Rwy Elev. 1022'		<p>MSA 25 NM from ARP</p>
<b>MISSED APCH: RNAV (GPS)</b> On track 097° to DN490, RT, via DN491 on track 316° to NUB, climbing to 6000'. Cross DN491 at 5000' or above. DN490[R] - DN491[A5000+] - NUB[A6000]									

**BARO-VNAV OPERATIONS**  
NOT AUTHORIZED BELOW -15°C.



FROM IAF UPALA:  
 IN CASE OF RADIO COMMUNICATION FAILURE:  
 MAINTAIN LAST CLEARED FL UNTIL REACHING UPALA,  
 IN UPALA HLD DECENT TO F180, PROCEED TO  
 ERL VOR/DME, ENTER ERL HLD, DECENT TO 5000,  
 FOR STANDARD ILS APPROACH



OCA (OCH)	A	B	C	D	DIST THR	9	8	7	6	5	4	3	2
LNAV	1440 (410)	1440 (410)	1440 (410)	1440 (410)	ALTITUDE	3940	3620	3310	2990	2670	2350	2030	1710
LNAV/VNAV	1350 (320)	1360 (340)	1420 (400)	1420 (400)									
					GS	kts		<b>80</b>	<b>100</b>	<b>120</b>	<b>140</b>	<b>160</b>	<b>180</b>
					VENUB - RW10 (9.8 NM)	MIN:SEC		7:21	5:53	4:54	4:12	3:41	3:16
					Rate of descent (5.2%)	ft/MIN		420	530	640	740	850	960

Timing not authorized for defining the MAPt.

Do not use for real life navigation!