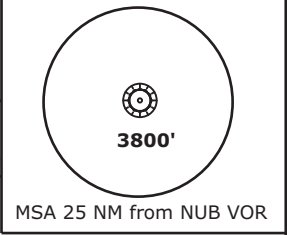


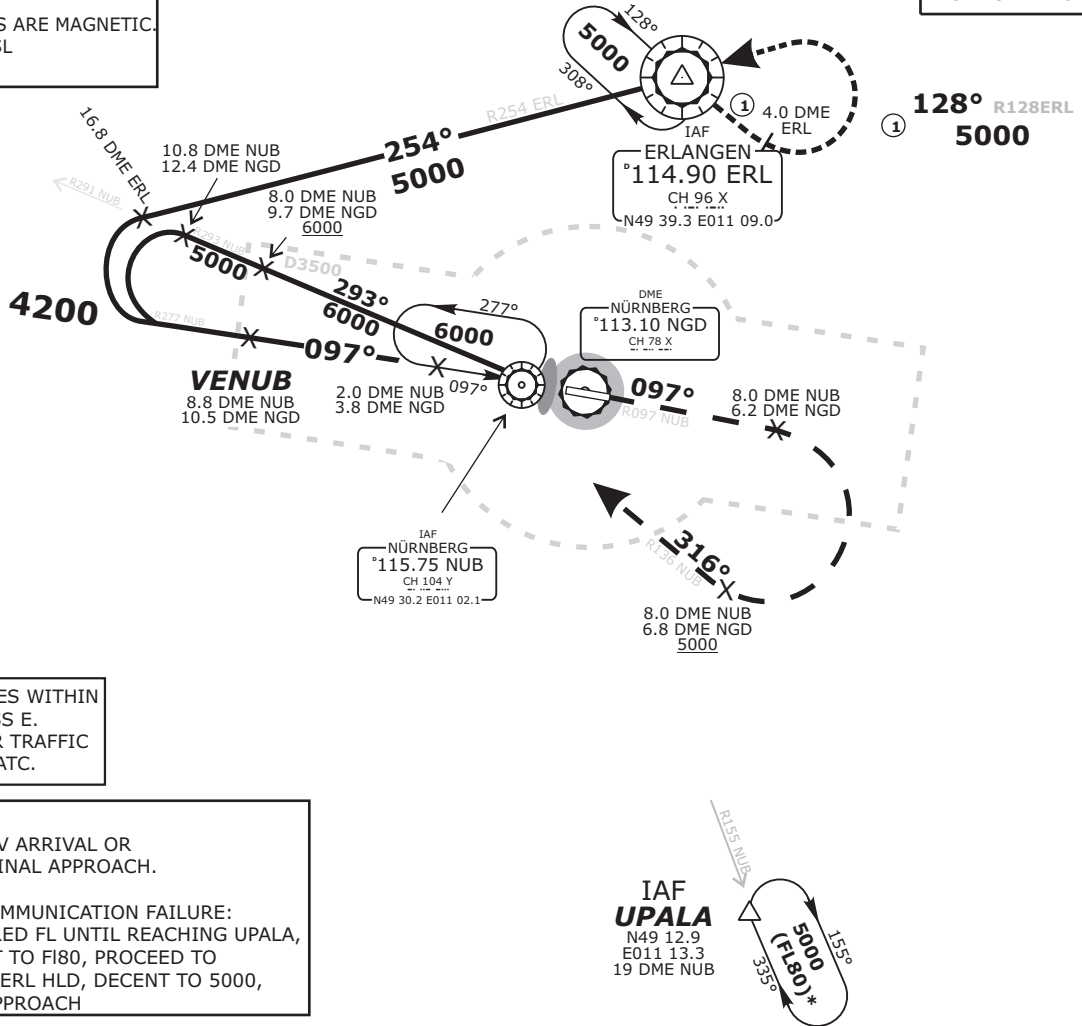
TRANS LEVEL: BY ATC TRANS ALT: 5000'		NÜRNBERG ATIS 123.07	NÜRNBERG Ground 118.10	NÜRNBERG Tower 118.30	MÜNCHEN Radar 129.52
---	--	-------------------------	---------------------------	--------------------------	-------------------------

DME NGD 113.10	DME NUB 115.75	Final Apch Course 097°	FAF VENUB 4200'	MDA(H) <i>Refer to Minimums</i>	Apt.Elev. 1046' Rwy Elev. 1022'
-----------------------------	-----------------------------	----------------------------------	------------------------------	--	------------------------------------

MISSED APCH: Climb on R097 NUB to 8.0 DME NUB (6.2 DME NGD), RT, on R136 NUB to NUB VOR/DME, climbing to 6000'. Cross inbound 8.0 DME NUB at 5000' or above.



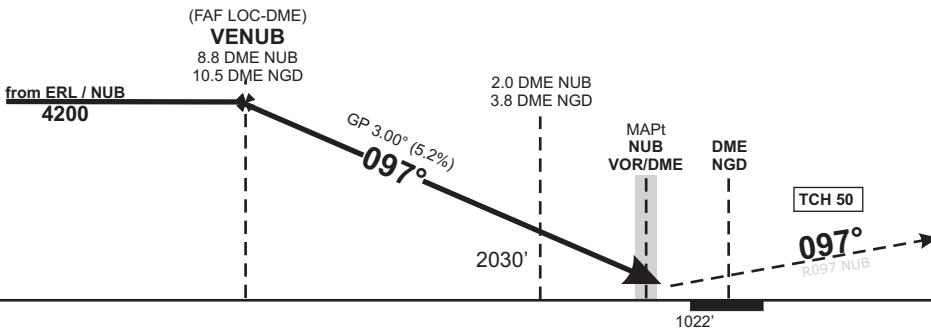
BEARINGS AND TRACKS ARE MAGNETIC.
ALTITUDES IN FEET MSL



PARTS OF IFR PROFILES WITHIN
AIRSPACE CLASS E.
WATCH OUT FOR VFR TRAFFIC
UNKNOWN TO ATC.

FROM IAF UPALA
EXPECT GPS/FMS RNAV ARRIVAL OR
RADAR VECTORS TO FINAL APPROACH.

IN CASE OF RADIO COMMUNICATION FAILURE:
MAINTAIN LAST CLEARED FL UNTIL REACHING UPALA,
IN UPALA HLD DESCENT TO F180, PROCEED TO
ERL VOR/DME, ENTER ERL HLD, DESCENT TO 5000,
FOR STANDARD ILS APPROACH



OCA (OCH)	A	B	C	D	DME NUB	8	7	6	5	4	3	2	1
VOR/DME	1530 (510)	1530 (510)	1530 (510)	1530 (510)	DIST THR	9	8	7	6	5	4	3	2
CIRCLING*	1670 (620)	1720 (670)	1840 (800)	1940 (890)	ALTITUDE	3940	3620	3310	2990	2670	2350	2030	1710
					GS	kts		80	100	120	140	160	180
					2.0 DME NUB - NUB	MIN:SEC		1:30	1:12	1:00	0:51	0:45	0:40
*North of aerodrome only					Rate of descent (5.2%)	ft/MIN		420	530	640	740	850	960

Timing not authorized for defining the MAPt.

Do not use for real life navigation!

Revision: 2016-06-23 - Change: note modified, radials added