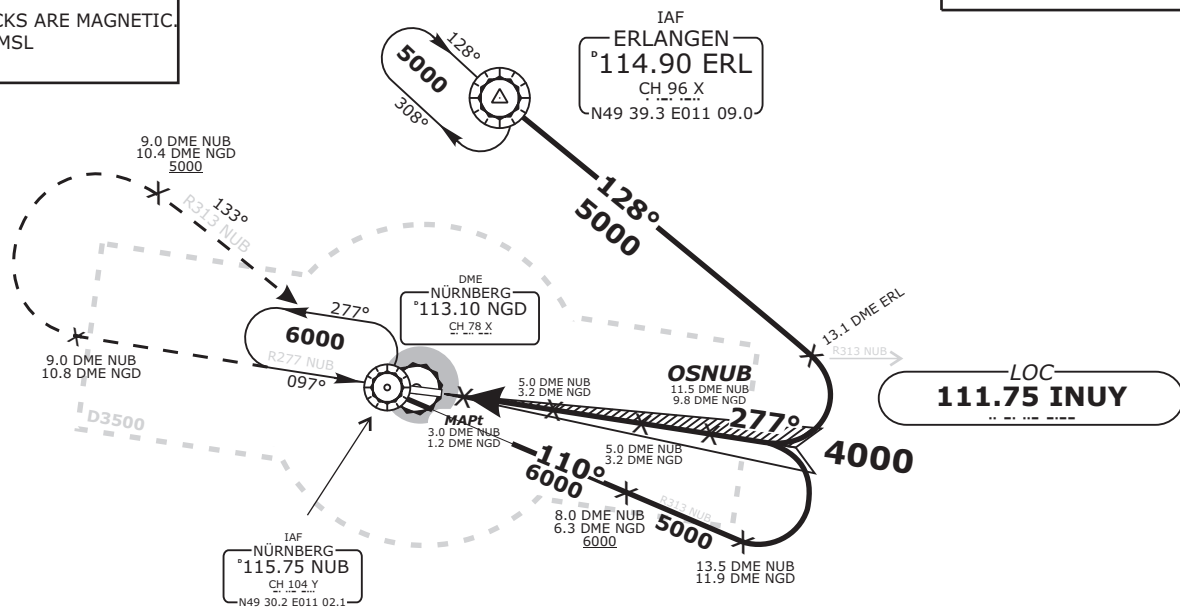


TRANS LEVEL: BY ATC TRANS ALT: 5000'		NÜRNBERG ATIS 123.07		NÜRNBERG Ground 118.10		NÜRNBERG Tower 118.30		MÜNCHEN Radar 129.52	
LOC INUY 111.75	DME NUB 115.75	DME NGD 113.10	Final Apch Course 277°	FAF OSNUB 4000'	MDA(H) <i>Refer to Minimums</i>	Apt.Elev. 1046' Rwy Elev. 1046'		<p>3800'</p> <p>MSA 25 NM from NUB VOR</p>	

MISSED APCH: Climb on R277 NUB to 9.0 DME NUB (10.8 DME NGD), RT on R313 NUB to NUB VOR/DME, climbing to 6000'. Cross 9.0 DME NUB (10.4 DME NGD) at 5000 or above.

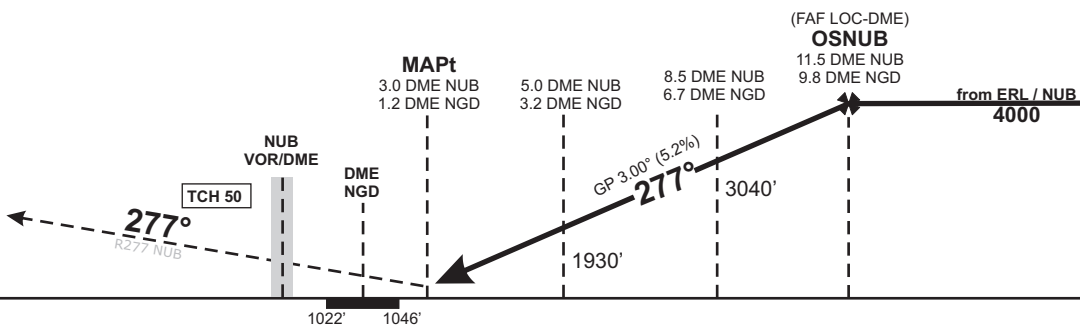
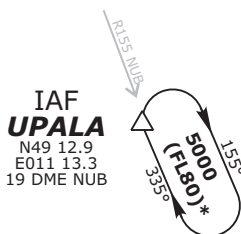
BEARINGS AND TRACKS ARE MAGNETIC.
ALTITUDES IN FEET MSL



PARTS OF IFR PROFILES WITHIN
AIRSPACE CLASS E.
WATCH OUT FOR VFR TRAFFIC
UNKNOWN TO ATC.

FROM IAF UPALA
EXPECT GPS/FMS RNAV ARRIVAL OR
RADAR VECTORS TO FINAL APPROACH.

IN CASE OF RADIO COMMUNICATION FAILURE:
MAINTAIN LAST CLEARED FL UNTIL REACHING UPALA,
IN UPALA HLD DESCENT TO F180, PROCEED TO
ERL VOR/DME, ENTER ERL HLD, DESCENT TO
FOR STANDARD ILS APPROACH



OCA (OCH)	A	B	C	D	DME NUB	4	5	6	7	8	9	10	11
LOC-DME	1450 (410)	1450 (410)	1450 (410)	1450 (410)	DIST THR	1.6	2.6	3.6	4.6	5.6	6.6	7.6	8.6
CIRCLING*	1670 (620)	1720 (670)	1840 (800)	1940 (890)	ALTITUDE	1610	1930	2250	2570	2880	3200	3520	3840
					GS	kts		80	100	120	140	160	180
					8.5 DME NUB - MAPt (5.5 NM)	MIN:SEC	4:08	3:18	2:45	2:21	2:04	1:50	
*North of aerodrome only					Rate of descent (5.2%)	ft/MIN	420	530	640	740	850	960	

Do not use for real life navigation!

Revision: 2016-06-23 - Change: note modified, radial added