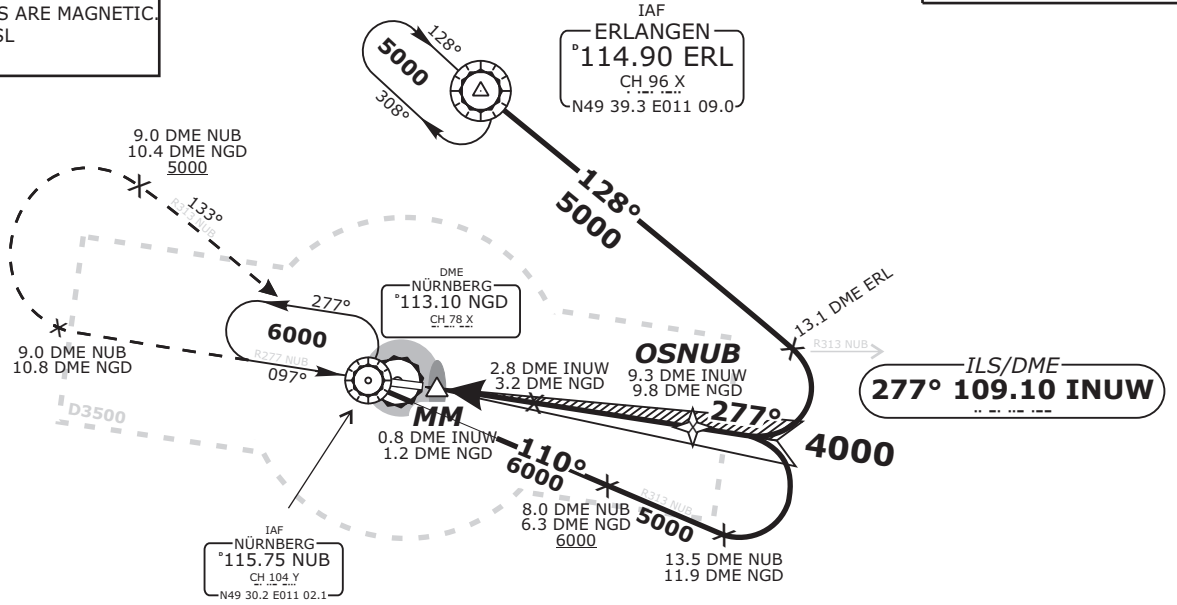


TRANS LEVEL: BY ATC TRANS ALT: 5000'	NÜRNBERG ATIS 123.07	NÜRNBERG Ground 118.10	NÜRNBERG Tower 118.30	MÜNCHEN Radar 129.52
---	-------------------------	---------------------------	--------------------------	-------------------------

ILS INUW 109.10	DME NUB 115.75	Final Apch Course 277°	FAF OSNUB 4000'	MDA(H) <i>Refer to Minimums</i>	Apt.Elev. 1046' Rwy Elev. 1046'	<p>3800'</p> <p>MSA 25 NM from NUB VOR</p>
---------------------------	--------------------------	----------------------------------	---------------------------	------------------------------------	------------------------------------	--

MISSED APCH: Climb on R277 NUB to 9.0 DME NUB (10.8 DME NGD), RT on R313 NUB to NUB VOR/DME, climbing to 6000'. Cross 9.0 DME NUB (10.4 DME NGD) at 5000 or above.

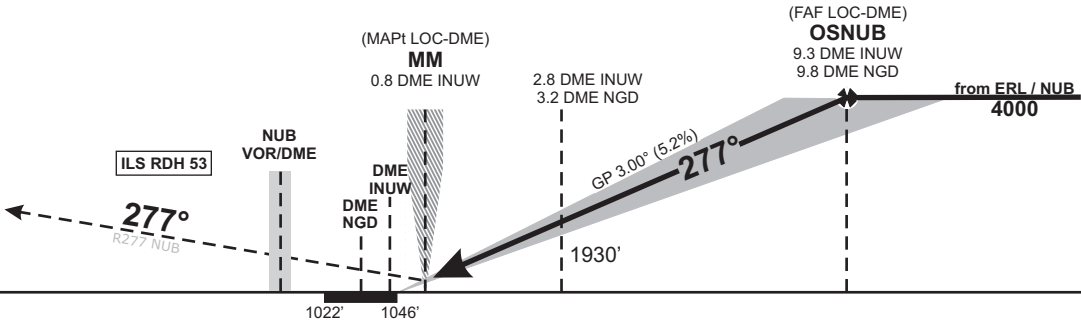
BEARINGS AND TRACKS ARE MAGNETIC.
ALTITUDES IN FEET MSL



PARTS OF IFR PROFILES WITHIN AIRSPACE CLASS E.
WATCH OUT FOR VFR TRAFFIC UNKNOWN TO ATC.

FROM IAF UPALA
EXPECT GPS/FMS RNAV ARRIVAL OR RADAR VECTORS TO FINAL APPROACH.

IN CASE OF RADIO COMMUNICATION FAILURE:
MAINTAIN LAST CLEARED FL UNTIL REACHING UPALA,
IN UPALA HLD DESCENT TO F80, PROCEED TO ERL VOR/DME, ENTER ERL HLD, DESCENT TO 5000,
FOR STANDARD ILS APPROACH



OCA (OCH)	A	B	C	D	DME INUW	2	3	4	5	6	7	8	9
ILS-DME CAT I	1200 (154)	1210 (164)	1227 (181)	1237 (191)	DIST THR	1.8	2.8	3.8	4.8	5.8	6.8	7.8	8.8
ILS-DME CAT II	1097 (51)	1113 (67)	1127 (81)	1140 (94)	ALTITUDE	1670	1990	2310	2630	2950	3270	3580	3900
LOC-DME	1450 (410)	1450 (410)	1450 (410)	1450 (410)	GS	kts		80	100	120	140	160	180
CIRCLING*	1670 (620)	1720 (670)	1840 (800)	1940 (890)	OSNUB - THR (9.1 NM)	MIN:SEC		6:50	5:28	4:33	3:54	3:25	3:02
*North of aerodrome only					Rate of descent (5.2%)	ft/MIN		420	530	640	740	850	960

CAT IIIa and CAT IIIb (minimum RVR 75m) approved.

Do not use for real life navigation!

Revision: 2016-06-23 - Change: Note modified, procedure