

vACC-Germany Instrument Approach Chart

Karlsruhe/Baden-Baden EDSB

Elevation: 408

ATIS: 121.275

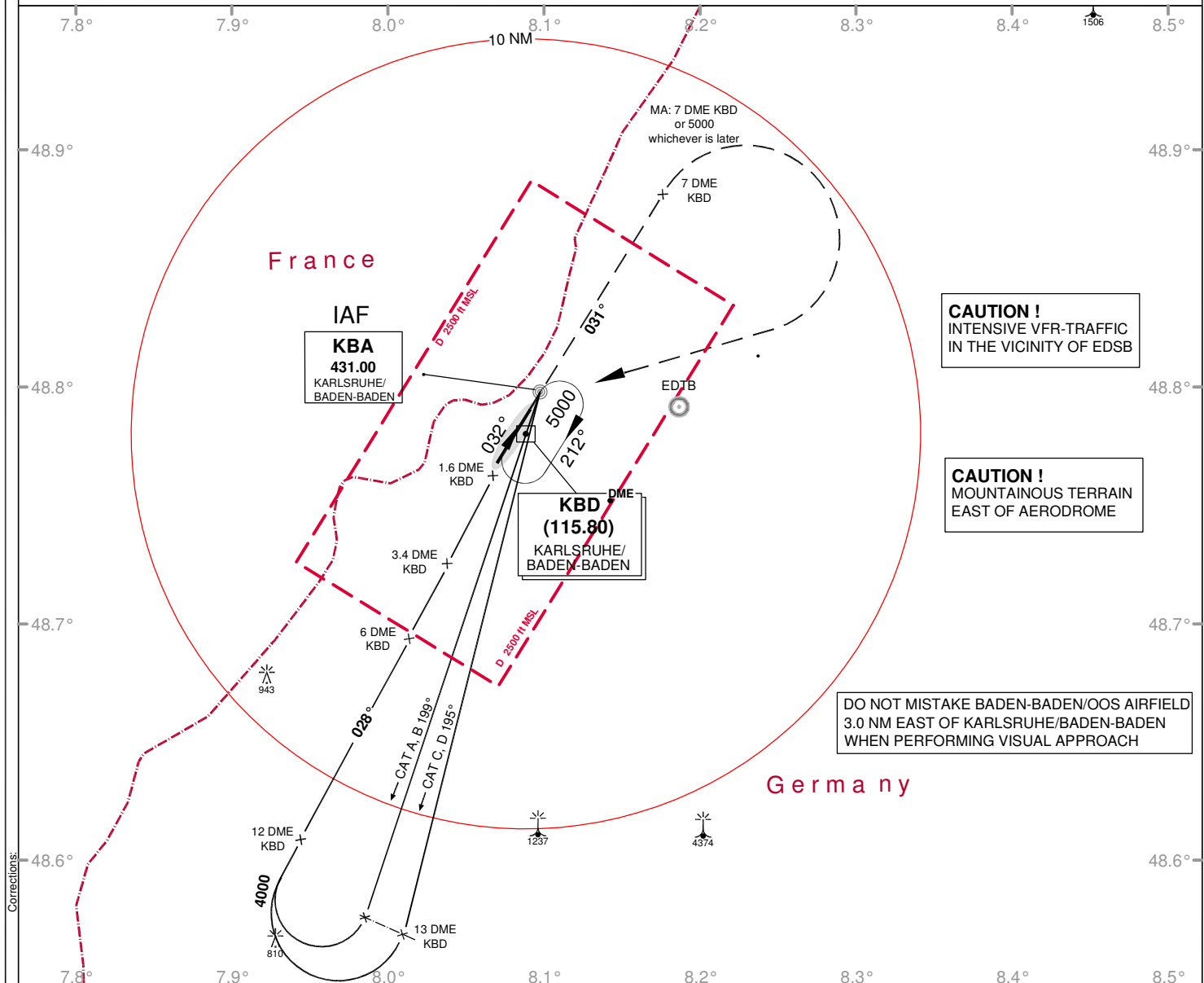
Tower: 125.870

VAR: 0°

Arrival: 125.050

Ground: 121.820

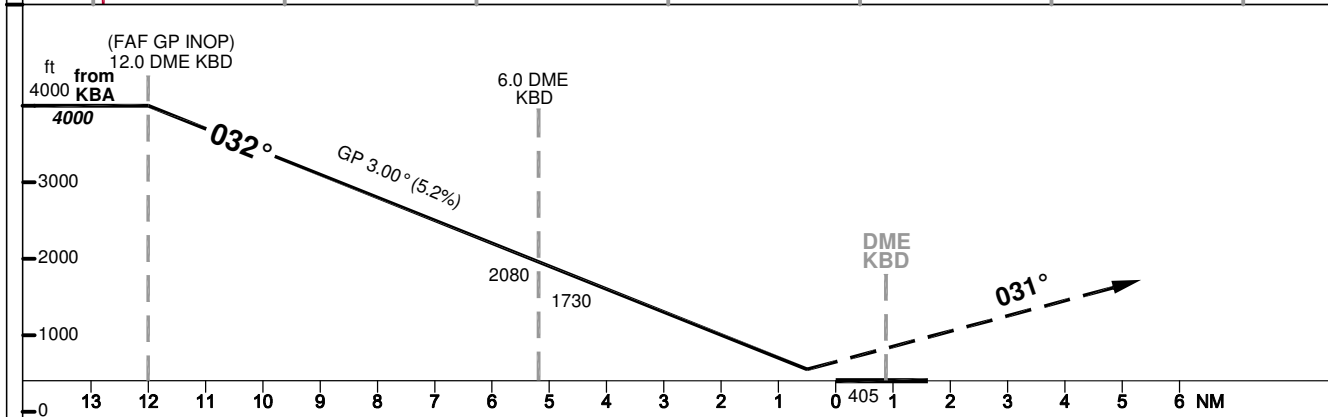
NDB RWY 03



CAUTION !
INTENSIVE VFR-TRAFFIC
IN THE VICINITY OF EDSB

CAUTION !
MOUNTAINOUS TERRAIN
EAST OF AERODROME

DO NOT MISTAKE BADEN-BADEN/OOS AIRFIELD
3.0 NM EAST OF KARLSRUHE/BADEN-BADEN
WHEN PERFORMING VISUAL APPROACH



OCA (OCH)	NDB DME
A	550 (145)
B	560 (155)
C	570 (165)
D	580 (175)
	580 (175)

MISSED APPROACH: Climb to track 031° to 7 DME KBD or 5000 whichever is later; RT to KBA NDB climbing to 6000

DME KBD	11	10	9	8	7	6	5	4	3
DIST THR	10.1	9.1	8.1	7.1	6.1	5.1	4.1	3.1	2.1
ALTITUDE	3670	3360	3040	2720	2400	2080	1760	1450	1130

