

VACC-SAG Instrument Approach Chart

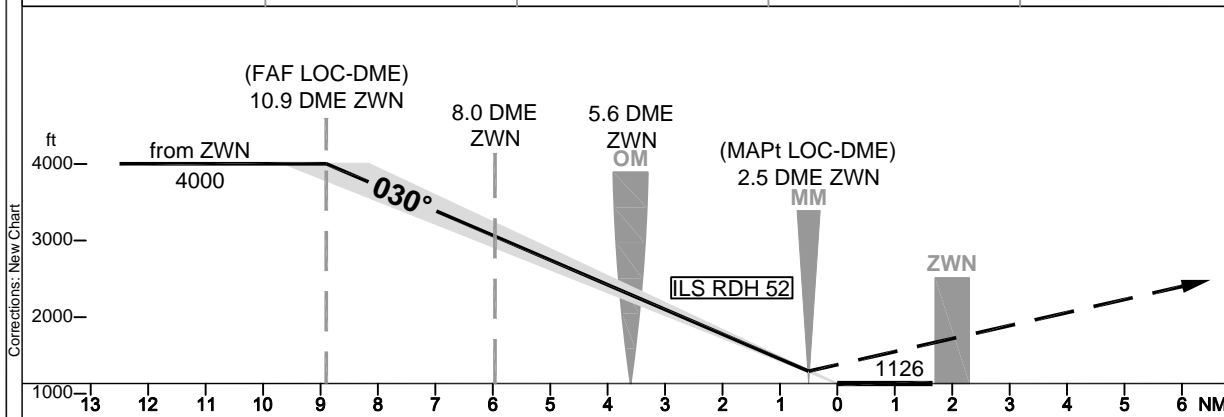
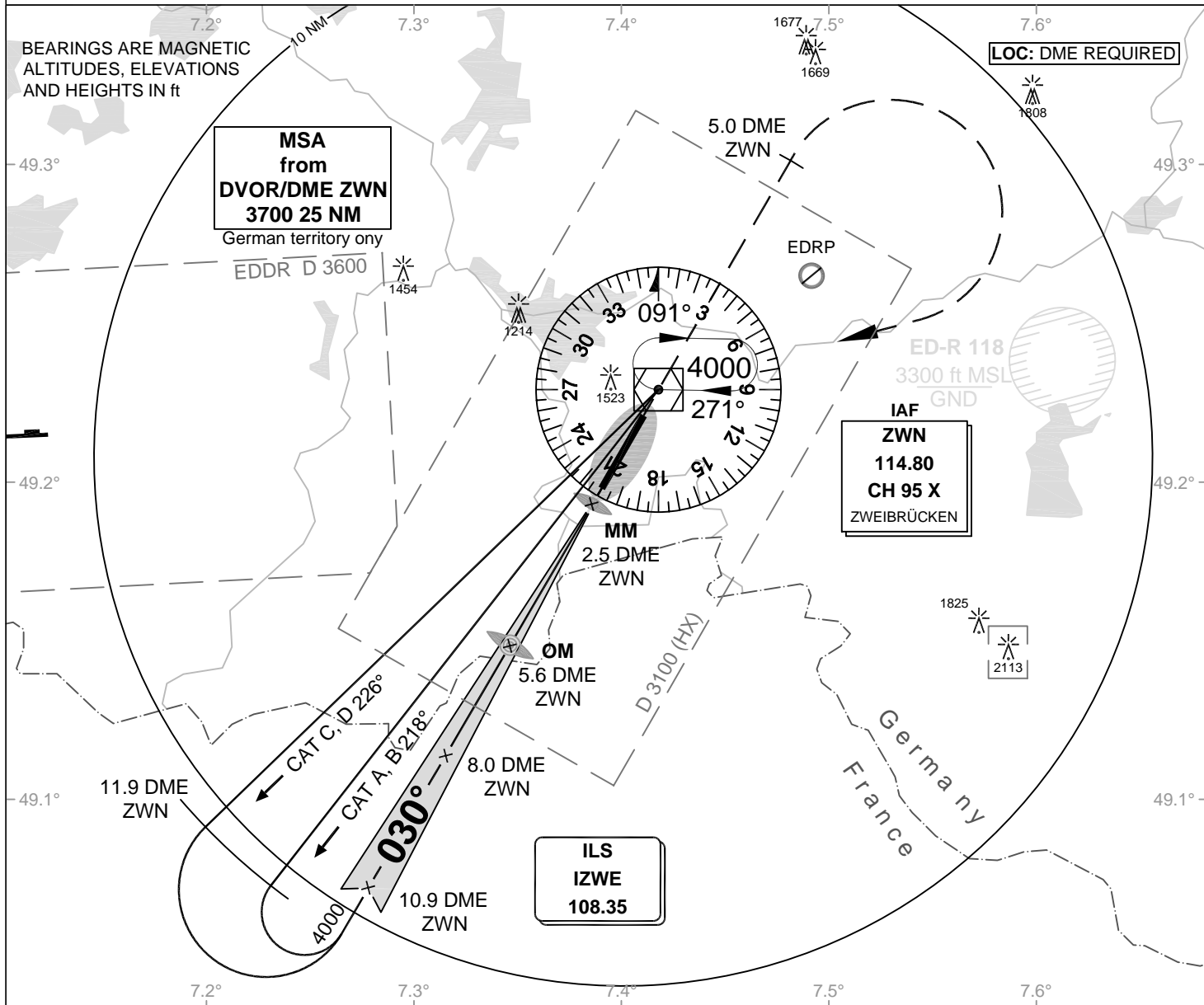
Zweibrücken
EDRZ

Elevation: 1133 ft

VAR: 0°

Tower: 123.820
Langen Radar: 127.500

ILS or LOC
RWY 03



OCA (OCH)	ILS CAT I	LOC DME
CAT A	1363 (237)	1570 (440)
CAT B	1373 (247)	1570 (440)
CAT C	1383 (257)	1570 (440)
CAT D	1393 (267)	1570 (440)
CAT E		
Large Aircraft	1393 (267)	

MISSED APPROACH: Straight ahead to 5.0 DME ZWN, RT to ZWN DVOR/DME climbing to 4000

DME VOR ZWN	10	9	8	7	6	5	4		
DME THR	8	7	6	5	4	3	2		
ALTITUDE	3730	3410	3090	2770	2460	2140	1820		

GS	kt	80	100	120	140	160	180
OM-THR (3.6 NM)	MIN:SEC	2:42	2:10	1:48	1:33	1:21	1:12
Rate of descent (5.2%)	ft / MIN	420	530	640	740	850	960

LOC-DME: Timing not authorized for defining the MAPt.