

# VATSIM Germany Standard Instrument Departure Chart

# PADERBORN / LIPPSTADT EDLP

Transition Altitude: 5000 ft.

ATIS 125.72

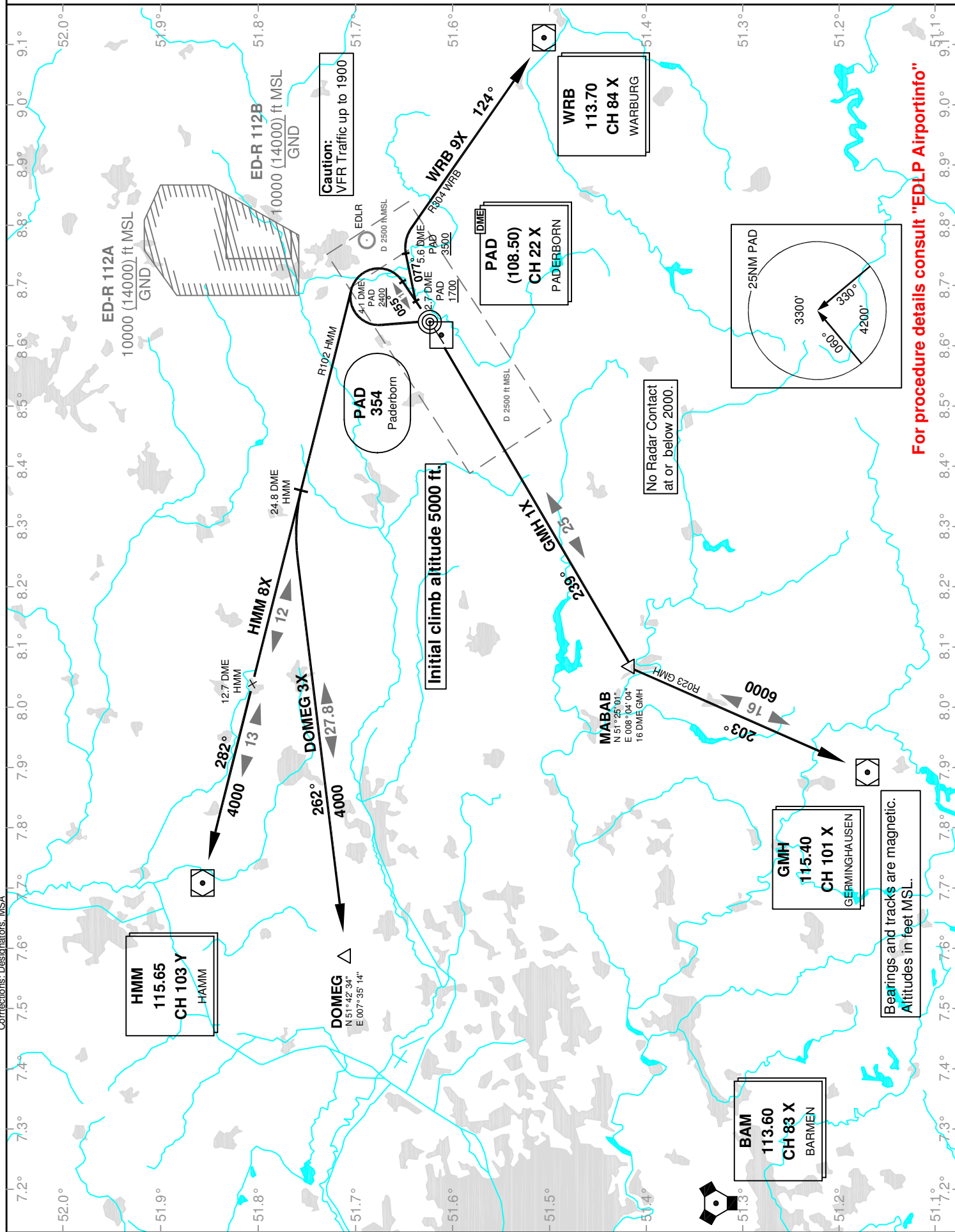
Ground 121.92

Tower 133.37

Langen Radar 125.22

## SID RWY 06

VAR: 1°E



Corrections: Desinatons, MSA