

VATSIM Germany Standard Instrument Departure Chart

MÖNCHENGLADBACH EDLN

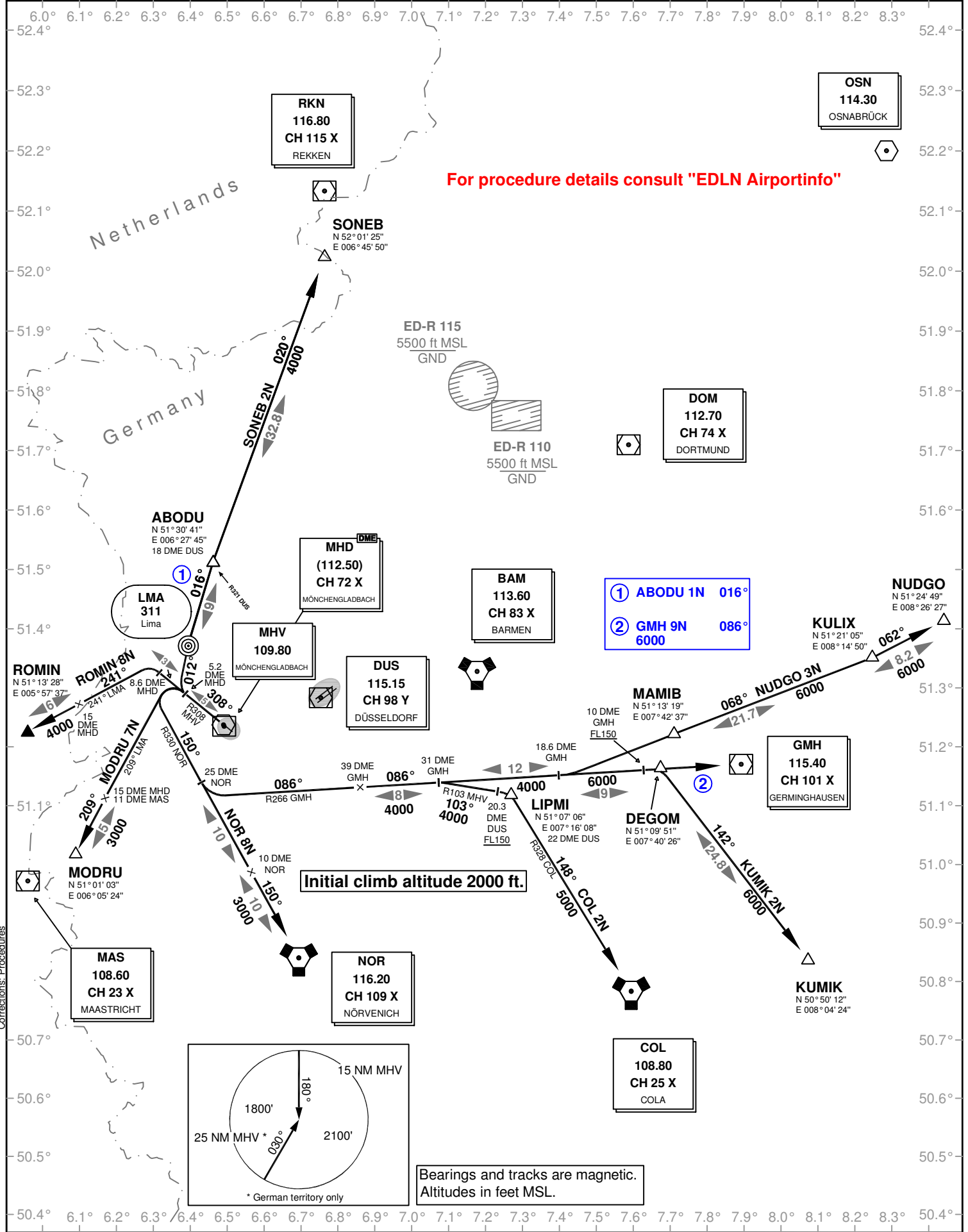
Transition Altitude: 5000 ft.

ATIS 109.80 (MHV)
Ground 121.92
Tower 118.12

Langen Radar 133.77
128.55

SID RWY 31

VAR: 0°



For procedure details consult "EDLN Airportinfo"

Initial climb altitude 2000 ft.

Bearings and tracks are magnetic.
Altitudes in feet MSL.

Corrections: Procedures