

VATSIM Germany Standard Instrument Departure Chart

MÖNCHENGLADBACH EDLN

Transition Altitude: 5000 ft.

ATIS 109.80 (MHV)

Langen Radar 133.77

Ground 121.92

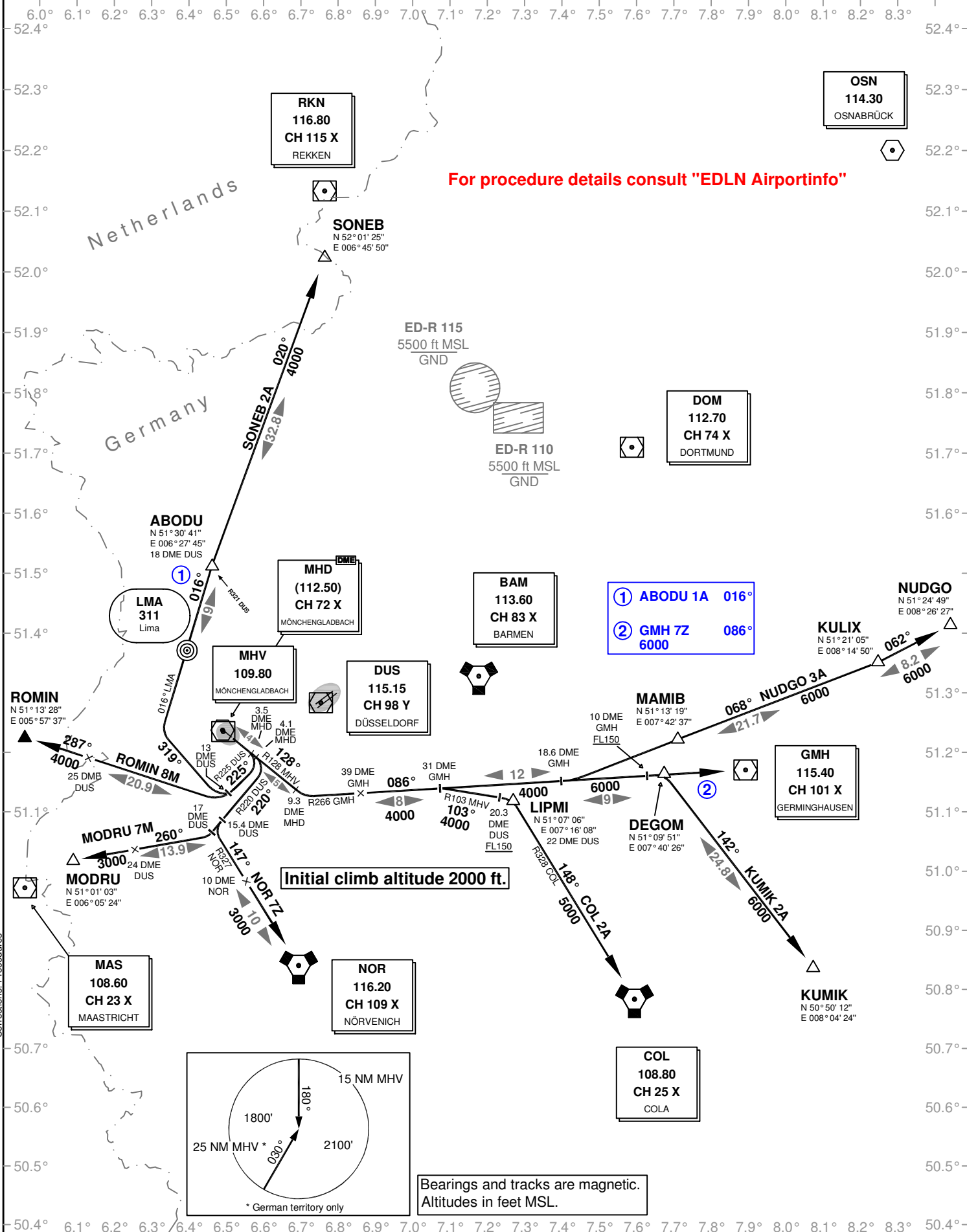
128.55

Tower 118.12

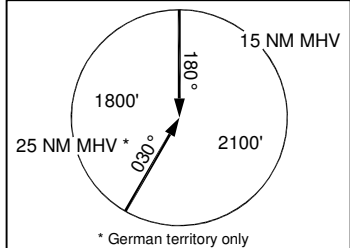
SID RWY 13

VAR: 0°

For procedure details consult "EDLN Airportinfo"



Corrections: Procedures



Bearings and tracks are magnetic.
Altitudes in feet MSL.