

VATSIM Germany GPS / FMS RNAV Arrival Chart

Frankfurt-Hahn EDFH

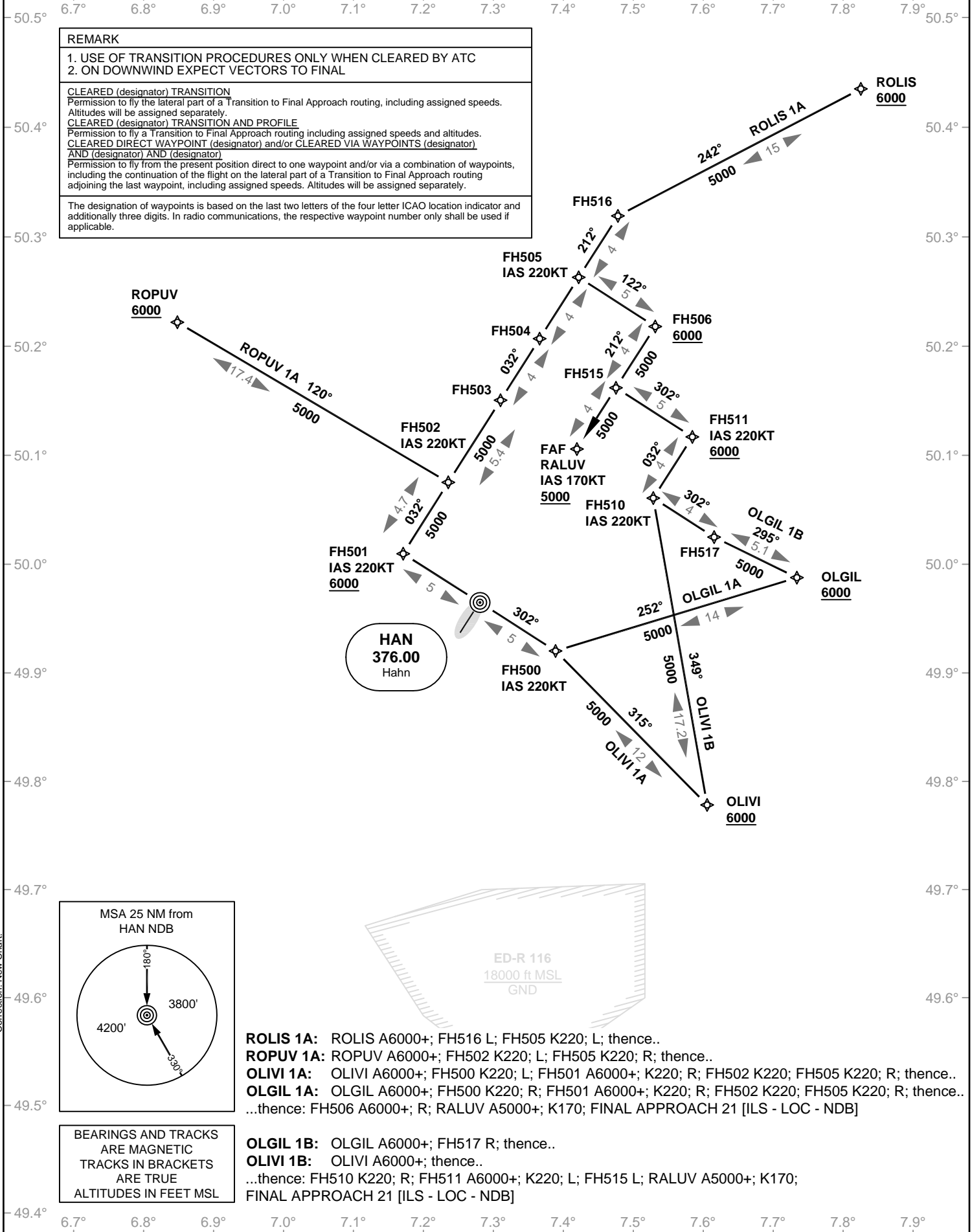
Transition Altitude: 5000 ft.

ATIS 120.900
Ground 121.970
Tower 119.650
Langen Radar 125.600

Transition to Final Approach RWY 21

VAR: 1° E

REMARK
1. USE OF TRANSITION PROCEDURES ONLY WHEN CLEARED BY ATC 2. ON DOWNWIND EXPECT VECTORS TO FINAL
CLEARED (designator) TRANSITION Permission to fly the lateral part of a Transition to Final Approach routing, including assigned speeds.
CLEARED (designator) TRANSITION AND PROFILE Permission to fly a Transition to Final Approach routing including assigned speeds and altitudes.
CLEARED DIRECT WAYPOINT (designator) and/or CLEARED VIA WAYPOINTS (designator) AND (designator) AND (designator) Permission to fly from the present position direct to one waypoint and/or via a combination of waypoints, including the continuation of the flight on the lateral part of a Transition to Final Approach routing adjoining the last waypoint, including assigned speeds. Altitudes will be assigned separately.
The designation of waypoints is based on the last two letters of the four letter ICAO location indicator and additionally three digits. In radio communications, the respective waypoint number only shall be used if applicable.



- ROLIS 1A:** ROLIS A6000+; FH516 L; FH505 K220; L; thence..
- ROPUV 1A:** ROPUV A6000+; FH502 K220; L; FH505 K220; R; thence..
- OLIVI 1A:** OLIVI A6000+; FH500 K220; L; FH501 A6000+; K220; R; FH502 K220; FH505 K220; R; thence..
- OLGIL 1A:** OLGIL A6000+; FH500 K220; R; FH501 A6000+; K220; R; FH502 K220; FH505 K220; R; thence..
- ...thence: FH506 A6000+; R; RALUV A5000+; K170; FINAL APPROACH 21 [ILS - LOC - NDB]
- OLGIL 1B:** OLGIL A6000+; FH517 R; thence..
- OLIVI 1B:** OLIVI A6000+; thence..
- ...thence: FH510 K220; R; FH511 A6000+; K220; L; FH515 L; RALUV A5000+; K170; FINAL APPROACH 21 [ILS - LOC - NDB]

Correction: New Chart.