

**VATSIM Germany**  
**Standard Instrument Departure Chart**
**Stuttgart**  
**EDDS**
**SIDs with Route Designator BRAVO**  
**RWY 25**

Designator	Route	After Take-Off		Remarks
		Climb to	Contact	
<b>ABTAL 4B</b>	<b>ABTAL FOUR BRAVO</b> On R252 STG to 5.9 DME STG; <b>CAT A:</b> LT, on track 164°; when crossing R231 STG LT with MAX IAS 125 KT until established on track 084°; <b>CAT B, C, D:</b> continuous LT with MAX IAS 230 KT; on track 084° to TEDGO (Δ); LT, on track 065° to ABTAL (Δ). Climb with 4 % (245 ft/NM) or more until passing 1900, climb with 5.1 % (310 ft/NM) or more until passing 4000. <b>GPS/FMS RNAV:</b> [ A1700+] - <u>DS046</u> [L] - DS047 (CAT A) - <u>DS052</u> (CAT A)[L] - DS048 (CAT A)[K125-] / (CAT B,C,D)[K230-] - TEDGO[L] - ABTAL.	5000 ft	Langen Radar 125.050*	1. PDG 4% (245 ft/NM) due to obstacles, 5.1% (310 ft/NM) due to airspace structure. If unable to comply, inform ATC. 2. Initial departure turn with 25° bank. 3. After passing 3500 BRNAV equipment necessary. 4. At TEDGO transition to (U)N869 or UL607 not possible.
<b>DKB 9B</b>	<b>DINKELSBÜHL NINE BRAVO</b> On R252 STG to 5.6 DME STG; RT (MAX IAS 230 KT until established on track 339°), on track 339°; intercept R233 LBU to LBU (Δ); RT, on R066 LBU / R246 DKB to DKB (Δ). Climb with 4 % (245 ft/NM) or more until passing 1900, climb with 5 % (305 ft/NM) or more until passing 4000. <b>GPS/FMS RNAV:</b> [A1700+] - <u>DS050</u> [R] - DS040[K230-] - DS041[R] - LBU[R] - DKB.			1. PDG 4% (245 ft/NM) due to obstacles, 5% (305 ft/NM) due to airspace structure. If unable to comply, inform ATC. 2. Initial departure turn with 25° bank. 3. Only for flights to continue via N869 northeastbound or with destination EDDN, EDTY, EDQ*.
<b>ETASA 4B</b>	<b>ETASA FOUR BRAVO</b> On R252 STG to 5.6 DME STG; RT (MAX IAS 230 KT until established on track 339°), on track 339°; when crossing R238 LBU, RT; on track 029° to KOVAN (Δ), then on track 003° to ETASA (Δ). Climb with 4 % (245 ft/NM) or more until passing 1900, climb with 5 % (305 ft/NM) or more until passing 4000. <b>GPS/FMS RNAV:</b> [A1700+] - <u>DS050</u> [R] - DS040[K230-] - DS043[R] - KOVAN[L] - ETASA.			1. PDG 4% (245 ft/NM) due to obstacles, 5% (305 ft/NM) due to airspace structure. If unable to comply, inform ATC. 2. Initial departure turn with 25° bank. 3. After crossing R238 LBU BRNAV equipment necessary. 4. Only for flights to EDDF, EDFC, EDFE, ETOU.
<b>GEBNO 7B</b>	<b>GEBNO SEVEN BRAVO</b> On R252 STG to 5.6 DME STG; RT (MAX IAS 230 KT until established on track 339°), on track 339°; intercept R233 LBU to LBU (Δ); RT, on R066 LBU / R246 DKB to 15.2 DME DKB; LT, on track 359° to GEBNO (Δ). Climb with 4 % (245 ft/NM) or more until passing 1900, climb with 5 % (305 ft/NM) or more until passing 4000. <b>GPS/FMS RNAV:</b> [A1700+] - <u>DS050</u> [R] - DS040[K230-] - DS041[R] - LBU[R] - DS051[L] - GEBNO.			1. PDG 4% (245 ft/NM) due to obstacles, 5% (305 ft/NM) due to airspace structure. If unable to comply, inform ATC. 2. Initial departure turn with 25° bank. 3. After passing 15.2 DME DKB BRNAV equipment necessary. 4. Only for flights to continue via Z76 northbound with MAX FL 180.
<b>KRH 5B</b>	<b>KARLSRUHE FIVE BRAVO</b> On R252 STG to 5.6 DME STG; RT (MAX IAS 230 KT until established on track 339°), on track 339°; when crossing R238 LBU, LT; on track 337° to ABGAN (Δ); then on track 277° to KRH (Δ). Climb with 4 % (245 ft/NM) or more until passing 1900, climb with 5 % (305 ft/NM) or more until passing 4000. <b>GPS/FMS RNAV:</b> [A1700+] - <u>DS050</u> [R] - DS040[K230-] - DS042[L] - ABGAN[L] - KRH.			1. PDG 4% (245 ft/NM) due to obstacles, 5% (305 ft/NM) due to airspace structure. If unable to comply, inform ATC. 2. Initial departure turn with 25° bank. 3. After crossing R238 LBU BRNAV equipment necessary. 4. Only for flights to EDDR, EDRZ, EDSB, ETAR, ETIP. 5. MAX FL 80, except weekends.
<b>OKIBA 4B</b>	<b>OKIBA FOUR BRAVO</b> On R252 STG to 5.6 DME STG; RT (MAX IAS 230 KT until established on track 339°), on track 339°; intercept R233 LBU to LBU (Δ); LT, on R355 LBU to OKIBA (Δ). Climb with 4 % (245 ft/NM) or more until passing 1900, climb with 5 % (305 ft/NM) or more until passing 4000. <b>GPS/FMS RNAV:</b> [A1700+] - <u>DS050</u> [R] - DS040[K230-] - DS041[R] - LBU[L] - OKIBA.			1. PDG 4% (245 ft/NM) due to obstacles, 5% (305 ft/NM) due to airspace structure. If unable to comply, inform ATC. 2. Initial departure turn with 25° bank. 3. Only for flights with RFL 200 or more.

(Sample: DS046 fly-over way point)

\* Departure frequency may deviate from the frequency published. Check ATIS for current departure frequency.

<b>Contact Langen Radar immediately after take-off!</b>
---

# VATSIM Germany

## Standard Instrument Departure Chart

# Stuttgart

## EDDS

### SIDs with Route Designator BRAVO

### RWY 25

Designator	Route	After Take-Off		Remarks
		Climb to	Contact	
<b>ROTWE 5B</b>	<b>ROTWE FIVE BRAVO</b> On R252 STG to 16.0 DME STG; LT, intercept R226 LBU to ROTWE (Δ). Climb with 4 % (245 ft/NM) or more until passing 1900, climb with 4.1 % (250 ft/NM) or more until passing 4000. <b>GPS/FMS RNAV:</b> [A1700+] - DS049[L] - ROTWE.	5000 ft	Langen Radar 125.050*	<ol style="list-style-type: none"> <li>PDG 4% (245 ft/NM) due to obstacles, 4.1% (250 ft/NM) due to airspace structure. If unable to comply, inform ATC.</li> <li>Via NATO for jet aircraft.</li> </ol>
<b>STG 1B</b>	<b>STG ONE BRAVO</b> On R252 STG to 5.9 DME STG; LT, on track 164°; when crossing R231 STG LT (MAX IAS 125 KT until established on R223 inbound STG), on R223 STG to STG (Δ). Climb with 4 % (245 ft/NM) or more until passing 1900, climb with 5.1 % (310 ft/NM) or more until passing 4000. <b>GPS/FMS RNAV:</b> [A1700+] - DS046[L] - DS047 - DS052[L] - DS053[K125-] - STG.		Stuttgart Director 119.850*	<ol style="list-style-type: none"> <li>PDG 4% (245 ft/NM) due to obstacles, 5.1% (310 ft/NM) due to airspace structure. If unable to comply, inform ATC.</li> <li>Initial departure turn with 20° bank.</li> <li>Only for local IFR training flights at EDDS.</li> </ol>
<b>SUL 3B</b>	<b>SULZ THREE BRAVO</b> On R252 STG to 5.9 DME STG; LT, on track 198° to intercept R058 SUL to SUL (Δ). Climb with 4 % (245 ft/NM) or more until passing 1900, climb with 4.5 % (275 ft/NM) or more until passing 4000. <b>GPS/FMS RNAV:</b> [A1700+] - DS044[L] - DS045[R] - SUL.		Langen Radar 125.050*	<ol style="list-style-type: none"> <li>PDG 4% (245 ft/NM) due to obstacles, 4.5% (275 ft/NM) due to airspace structure. If unable to comply, inform ATC.</li> <li>Only for piston engine and turboprop aircraft.</li> <li>Jet aircraft only with destination EDTL, EDNY, LSZH and LSZR.</li> </ol>
<b>TAGIK 4B</b>	<b>TAGIK FOUR BRAVO</b> On R252 STG to 5.6 DME STG; RT (MAX IAS 230 KT until established on track 339°), on track 339°; when crossing R238 LBU, LT; on track 337° to ABGAN (Δ); then on track 003° to TAGIK (Δ). Climb with 4% (245 ft/NM) or more until passing 1900, climb with 5% (305 ft/NM) or more until passing 4000. <b>GPS/FMS RNAV:</b> [A1700+] - DS050[R] - DS040[K230-] - DS042[L] - ABGAN[R] - TAGIK.			<ol style="list-style-type: none"> <li>PDG 4% (245 ft/NM) due to obstacles, 5% (305 ft/NM) due to airspace structure. If unable to comply, inform ATC.</li> <li>Initial departure turn with 25° bank.</li> <li>After crossing R238 LBU BRNAV equipment necessary.</li> <li>Only for flights to continue via ASKIK or ABUMO with MAX FL 240.</li> </ol>
<b>TEDGO 1B</b>	<b>TEDGO ONE BRAVO</b> On R252 STG to 5.9 DME STG; <b>CAT A:</b> LT, on track 164°; when crossing R231 STG LT with MAX IAS 125 KT until established on track 084°; <b>CAT B, C, D:</b> continuous LT with MAX IAS 230 KT; on track 084° to TEDGO (Δ). Climb with 4 % (245 ft/NM) or more until passing 1900, climb with 5.1 % (310 ft/NM) or more until passing 4000. <b>GPS/FMS RNAV:</b> [A1700+] - DS046[L] - DS047 (CAT A) - DS052 (CAT A)[L] - DS048 (CAT A)[K125-] / (CAT B,C,D)[K230-] - TEDGO.		Stuttgart Director 119.850*	<ol style="list-style-type: none"> <li>PDG 4% (245 ft/NM) due to obstacles, 5.1% (310 ft/NM) due to airspace structure. If unable to comply, inform ATC.</li> <li>Initial departure turn with 25° bank.</li> <li>After passing 3500 BRNAV equipment necessary.</li> <li>Only for local IFR training flights at EDDS and for flights to ETHL.</li> </ol>
<b>VESID 4B</b>	<b>VESID FOUR BRAVO</b> On R252 STG to 5.6 DME STG; RT (MAX IAS 230 KT until established on track 339°), on track 339°; when crossing R238 LBU, LT; on track 337° to ABGAN (Δ); then on track 337° to VESID (Δ). Climb with 4% (245 ft/NM) or more until passing 1900, climb with 5% (305 ft/NM) or more until passing 4000. <b>GPS/FMS RNAV:</b> [A1700+] - DS050[R] - DS040[K230-] - DS042[L] - ABGAN[L] - VESID.		Langen Radar 125.050*	<ol style="list-style-type: none"> <li>PDG 4% (245 ft/NM) due to obstacles, 5% (305 ft/NM) due to airspace structure. If unable to comply, inform ATC.</li> <li>Initial departure turn with 25° bank.</li> <li>After crossing R238 LBU BRNAV equipment necessary.</li> </ol>
<b>KUNOD 1B</b>	<b>KUNOD ONE BRAVO</b> On R252 STG to 5.9 DME STG; LT (MAX IAS 230 KT until established on track 084°), on track 084° to TEDGO (Δ); RT, on track 137° to KUNOD (Δ). Climb with 4 % (245 ft/NM) or more until passing 1900, climb with 4.3 % (260 ft/NM) or more until passing 5000. <b>GPS/FMS RNAV:</b> [A1700+] - DS046[L] - DS048[K230-] - TEDGO[R] - KUNOD.			<ol style="list-style-type: none"> <li>PDG 4% (245 ft/NM) due to obstacles, 4.3% (260 ft/NM) due to airspace structure. If unable to comply, inform ATC.</li> <li>Initial departure turn calculated max. IAS 230KT / 25° bank.</li> <li>After passing 3500 BRNAV equipment necessary.</li> <li>At TEDGO transition to (U)N869 or UL607 not possible.</li> </ol>

(Sample: DS046 fly-over way point)

\* Departure frequency may deviate from the frequency published. Check ATIS for current departure frequency.

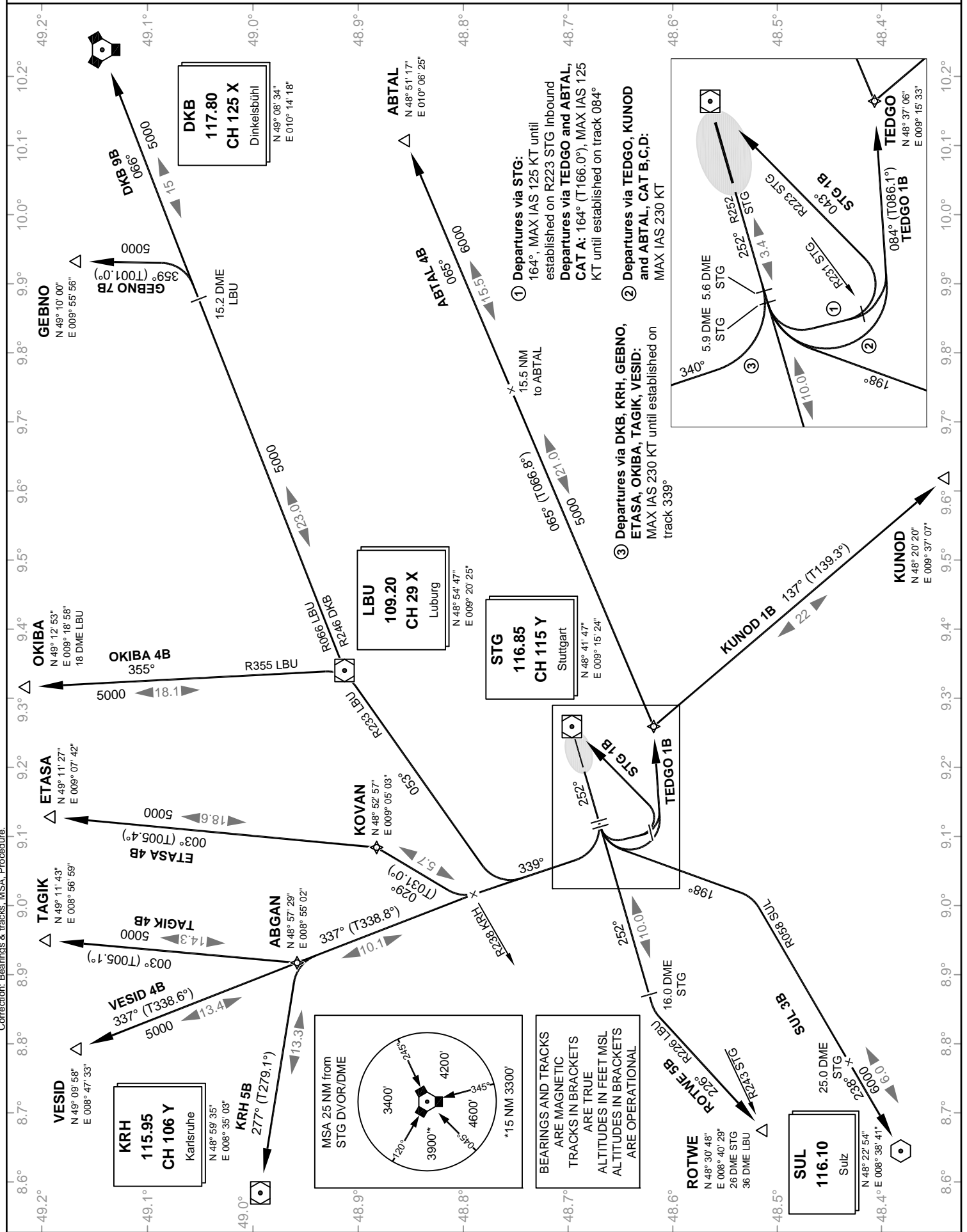
**Contact Langen Radar immediately after take-off!**

# VATSIM Germany Standard Instrument Departure Chart

**Stuttgart  
EDDS  
SID  
RWY 25**

Transition Altitude: 5000 ft.      ATIS 126.120      Tower 118.800  
Langen Radar 125.050      119.200      Ground 118.600  
Director 119.850

VAR: 2° E



Correction: Bearings & Tracks, MSA Procedure.

# VATSIM Germany GPS / FMS RNAV Departure Chart

## Stuttgart EDDS RNAV SID RWY 25

Transition Altitude: 5000 ft.      ATIS 126.120      Tower 118.800  
Langen Radar 125.050      Ground 118.600  
VAR: 2° E      Director 119.850

