

VATSIM Germany Standard Instrument Departure Chart

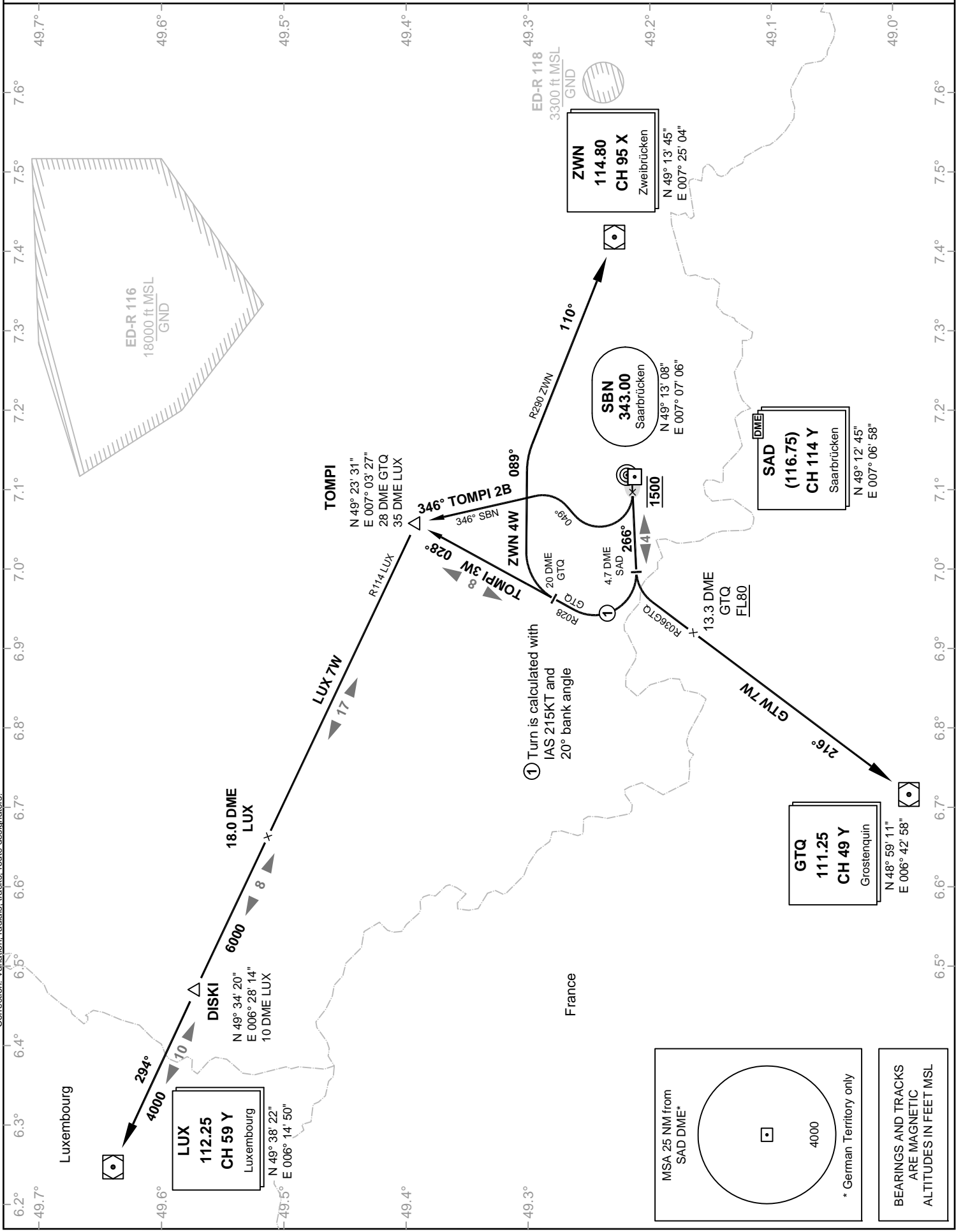
SAARBRÜCKEN EDDR

Transition Altitude: 5000 ft.

ATIS: 125.300
Langen Radar: 129.670
Tower: 118.350
118.550

SID RWY 27

VAR: 1°E



Correction: Variation, radials, tracks, route designators.

VATSIM Germany
Standard Instrument Departure Chart
SAARBRÜCKEN
EDDR
SID
RWY 27

Designator	Route	After Take-Off		Remarks
		Climb to	Contact	
GTQ 7W	GROSTENQUIN SEVEN WHISKEY On RWY track to 4.7 DME SAD; LT, to intercept R036 GTQ to GTQ (Δ). Cross 13.3 DME GTQ at FL80 or above. GPS/FMS RNAV: [A1500+] - DR107[L] - DR108[F080+] - GTQ.	4000 ft	Langen Radar 129.670	PDG 13.7% (834 ft/NM) until passing FL80 due to airspace structure. If unable to comply, inform ATC.
ZWN 4W	ZWEIBRUECKEN FOUR WHISKEY On RWY track to 4.7 DME SAD; RT, to intercept R028 GTQ; at 20.0 DME GTQ RT, on track 089° to intercept R290 ZWN to ZWN (Δ). GPS/FMS RNAV: [A1500+] - DR101[R] - DR102 [K215-] - DR103[R] - DR104[A5000+; R] - ZWN.			<ol style="list-style-type: none"> 1. During activity of NLFS, alternative instructions will be given by ATC. 2. PDG 3.6% (220 ft/NM) until passing A5000 due to airspace structure. 3. Turn at 4.7 DME SAD is calculated with IAS 215 kt / 20° bank.
LUX 7W	LUXEMBOURG SEVEN WHISKEY On RWY track to 4.7 DME SAD; RT, to intercept R028 GTQ, on R028 GTQ to TOMPI (Δ); LT, on R115 LUX via DISKI to LUX (Δ). GPS/FMS RNAV: [A1500+] - DR101[R] - DR102 [K215-] - TOMPI[L] - DISKI - LUX.			<ol style="list-style-type: none"> 1. During activity of NLFS, alternative instructions will be given by ATC. 2. Only for destination ELLX. 3. Turn at 4.7 DME SAD is calculated with IAS 215 kt / 20° bank.
TOMPI 3W	TOMPI THREE WHISKEY On RWY track to 4.7 DME SAD; RT, to intercept R028 GTQ, on R028 GTQ to TOMPI (Δ). GPS/FMS RNAV: [A1500+] - DR101[R] - DR102 [K215-] - TOMPI.			<ol style="list-style-type: none"> 1. During activity of NLFS, alternative instructions will be given by ATC. 2. Turn at 4.7 DME SAD is calculated with IAS 215 kt / 20° bank.
TOMPI 2B	TOMPI TWO BRAVO On RWY track to 1500ft; RT, on track 049° to intercept track 346° from SBN to TOMPI (Δ). GPS/FMS RNAV: DR105[A1500+; R] - DR106[L] - TOMPI.			<ol style="list-style-type: none"> 1. Not to be filed in flight plan. Will be assigned by ATC on request. 2. During activity of NLFS, alternative instructions will be given by ATC. 3. Only for prop/turboprop aircraft up to 5.7t MTOW.

(Sample: DR200 fly-over way point)

Contact Langen Radar immediately after take-off!
