

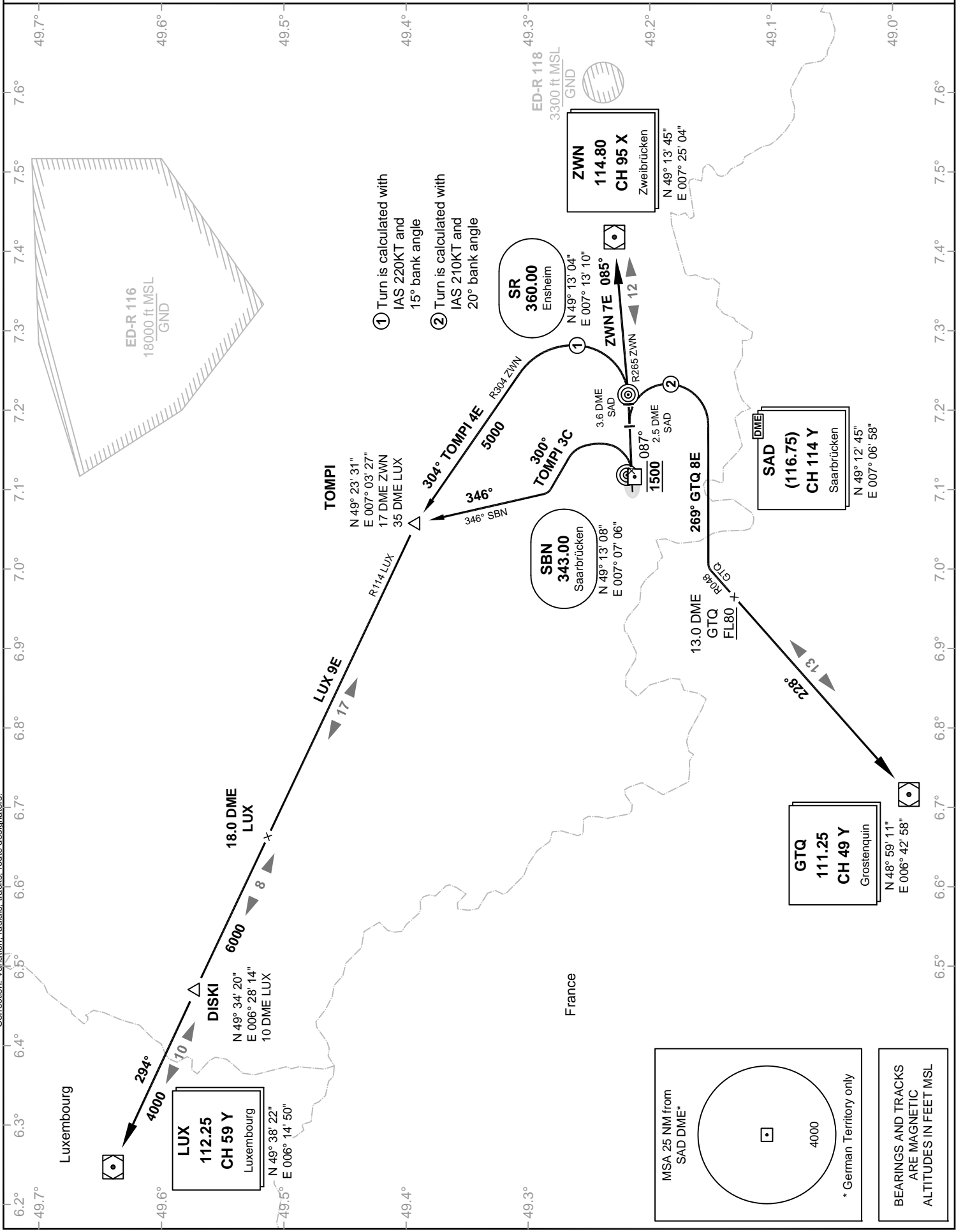
VATSIM Germany Standard Instrument Departure Chart

SAARBRÜCKEN
EDDR
SID
RWY 09

Transition Altitude: 5000 ft.

ATIS: 125.300
Langen Radar: 129.670
Tower: 118.350
118.550

VAR: 1°E



VATSIM Germany
Standard Instrument Departure Chart
SAARBRÜCKEN
EDDR
SID
RWY 09

Designator	Route	After Take-Off		Remarks
		Climb to	Contact	
GTQ 8E	GROSTENQUIN EIGHT ECHO On RWY track inbound SR NDB to 2.5 DME SAD; RT, on track 269° to intercept R048 GTQ to GTQ (Δ). Climb with 6.5% (397 ft/NM) until passing FL80. Cross 13.0 DME GTQ at FL 80 or above. GPS/FMS RNAV: [A1500+] - <u>DR200</u> [R] - DR202[K210-] - DR203[L] - DR204[F080+] - GTQ.	4000 ft	Langen Radar 129.670	1. PDG 6.5% (397 ft/NM) due to airspace structure. If unable to comply, inform ATC. 2. Turn at 2.5 DME SAD is calculated with IAS 210 kt / 20° bank.
ZWN 7E	ZWEIBRÜCKEN SEVEN ECHO On RWY track to intercept R265 ZWN to ZWN (Δ). Climb with 7% (425 ft/NM) until passing 3600. GPS/FMS RNAV: [A1500+] - ZWN.			PDG 7% (425 ft/NM) due to airspace structure. If unable to comply, inform ATC.
LUX 9E	LUXEMBOURG NINE ECHO On RWY track inbound SR NDB to 3.6 DME SAD; LT, to intercept R304 ZWN to TOMPI (Δ); LT, on R114 LUX via DISKI to LUX (Δ). GPS/FMS RNAV: [A1500+] - <u>DR201</u> [L] - DR205[K220-] - TOMPI[L] - DISKI - LUX.			1. During activity of NLFS, alternative instructions will be given by ATC. 2. Only for destination ELLX. 3. Turn at 3.6 DME SAD is calculated with IAS 220 kt / 15° bank.
TOMPI 4E	TOMPI FOUR ECHO On RWY track inbound SR NDB to 3.6 DME SAD; LT, to intercept R304 ZWN to TOMPI (Δ). GPS/FMS RNAV: [A1500+] - <u>DR201</u> [L] - DR205[K220-] - TOMPI.			1. During activity of NLFS, alternative instructions will be given by ATC. 2. Turn at 3.6 DME SAD is calculated with IAS 220 kt / 15° bank.
TOMPI 3C	TOMPI THREE CHARLIE On RWY track to 1500ft; LT, on track 300° to intercept track 346° from SBN to TOMPI (Δ). GPS/FMS RNAV: <u>DR206</u> [A1500+; L] - DR207[R] - TOMPI.			1. Not to be filed in flight plan. Will be assigned by ATC on request. 2. During activity of NLFS, alternative instructions will be given by ATC. 3. Only for prop/turboprop aircraft up to 5.7t MTOW.

(Sample: DR200 fly-over way point)

Contact Langen Radar immediately after take-off!
