

VATSIM Germany Instrument Approach Chart

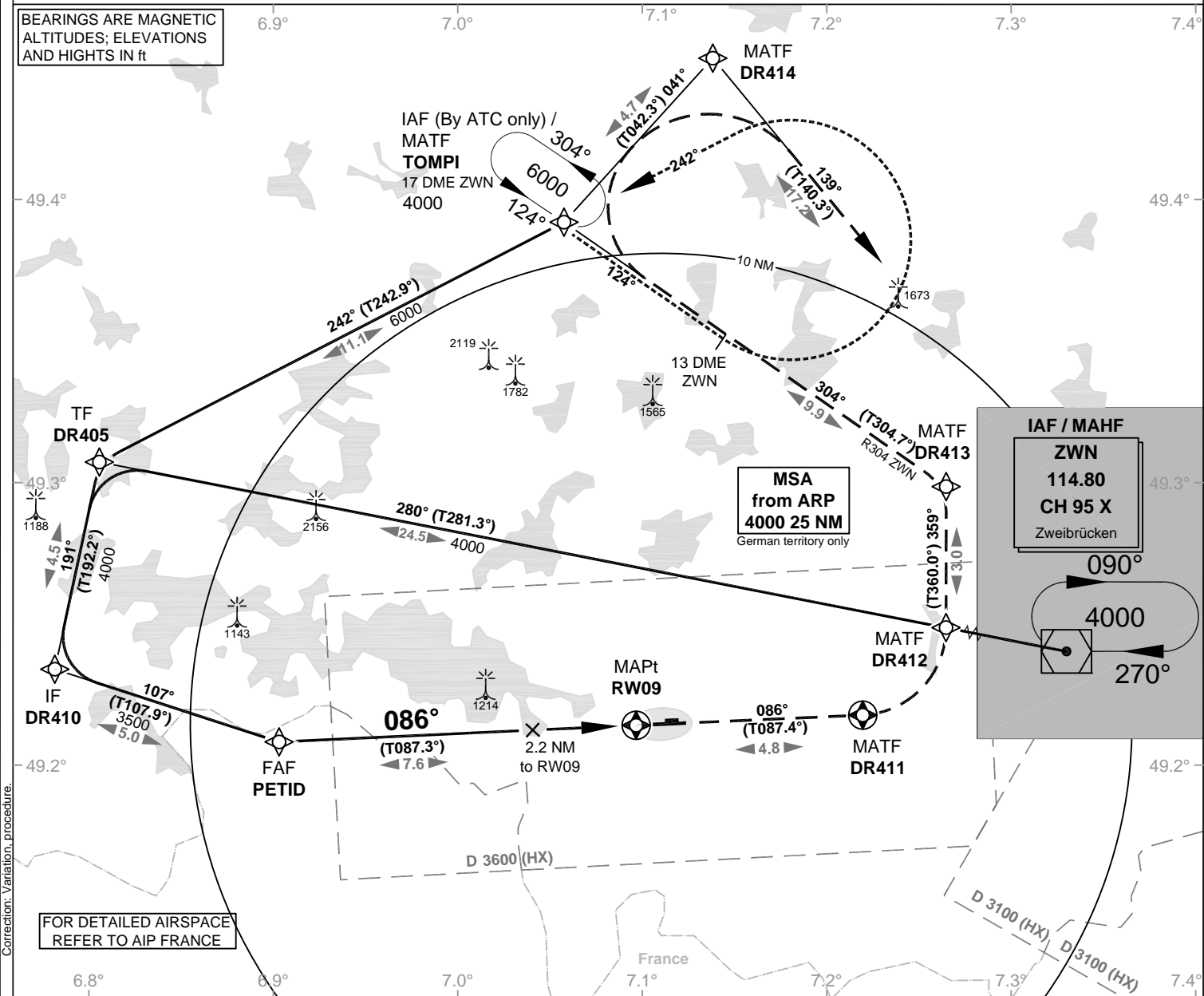
**SAARBRÜCKEN
EDDR
RNAV(GPS)
RWY 09**

Elevation: 1058 ft.

ATIS: 125.300
Langen Radar: 129.670
Tower: 118.350
118.550

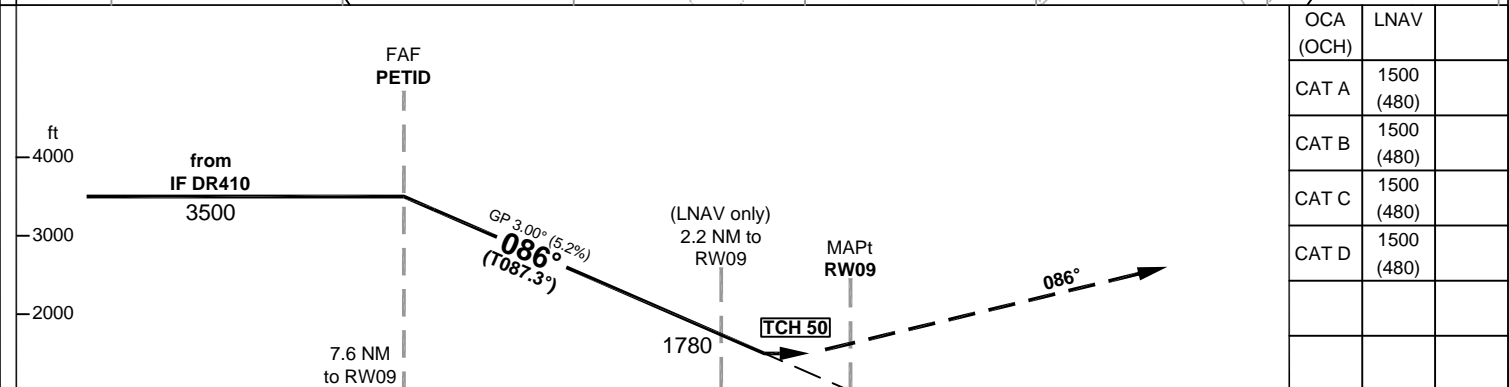
VAR: 1°E

BEARINGS ARE MAGNETIC
ALTITUDES; ELEVATIONS
AND HEIGHTS IN ft



Correction: Variation, procedure.

FOR DETAILED AIRSPACE
REFER TO AIP FRANCE



OCA (OCH)	LNAV
CAT A	1500 (480)
CAT B	1500 (480)
CAT C	1500 (480)
CAT D	1500 (480)

MISSED APPROACH: Climb on track 086° to DR411; LT, via DR412 on track 359° to DR413; LT, on track 304° to TOMPI climbing to 4000; RT via DR414 on track 139° to ZWN.
RNAV (GPS)
 DR411[L] - DR412 - DR413[L] - TOMPI[A4000;R] - DR414[R] - ZWN

DIST THR / RW09	7	6	5	4	3	2		
ALTITUDE	3310	2990	2670	2350	2030	1710		

GS	kt	80	100	120	140	160	180
PETID - RW09 (7.6 NM)	MIN:SEC	5:42	4:34	3:48	3:15	2:51	2:32
Rate of descent (5.2%)	ft / MIN	420	530	640	740	850	960

Timing not authorized for defining the MAPt.