

# VATSIM Germany Instrument Approach Chart

**SAARBRÜCKEN  
EDDR  
NDB  
RWY 27**

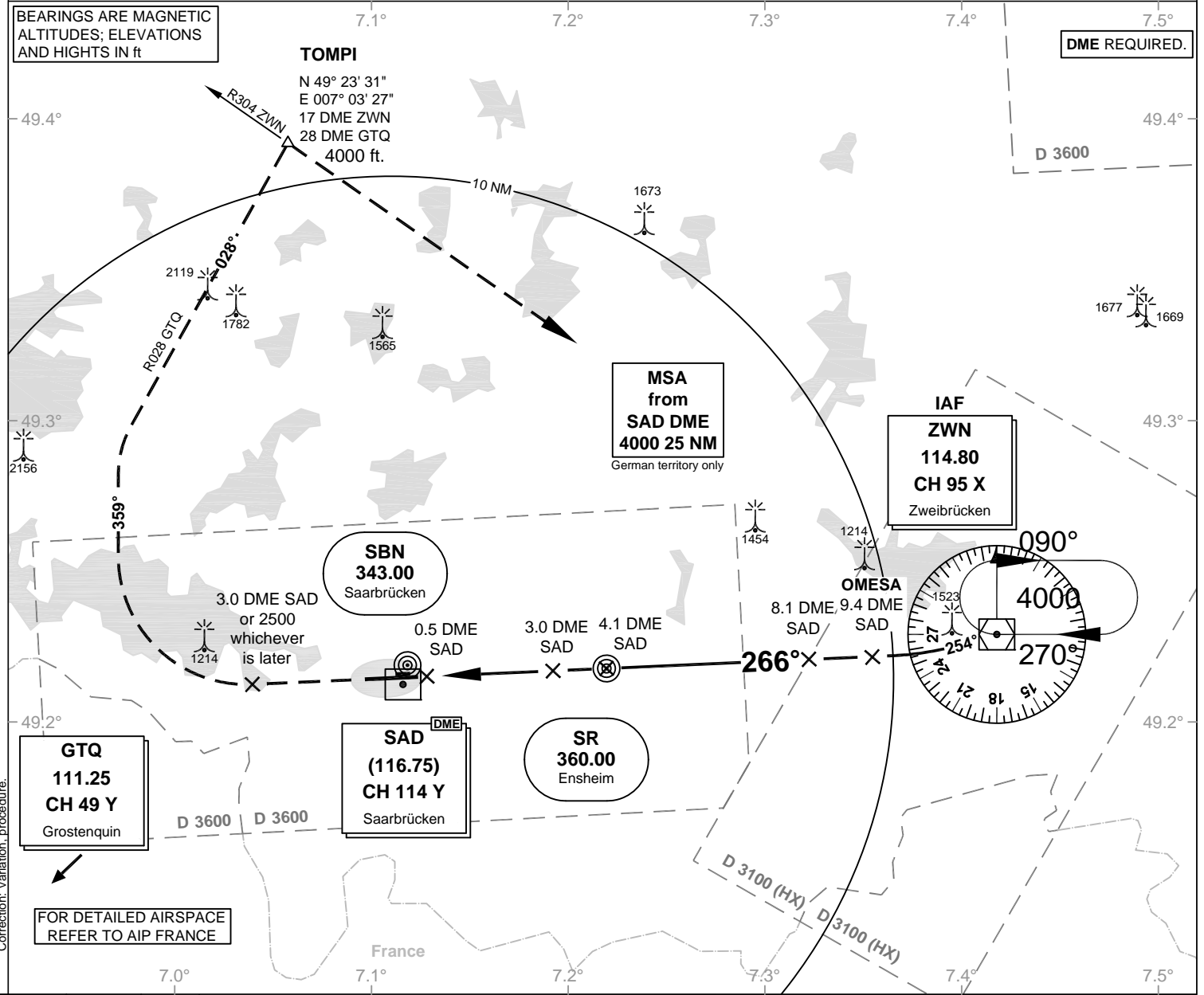
Elevation: 1058 ft.

ATIS: 125.300  
Langen Radar: 129.670  
Tower: 118.350  
118.550

VAR: 1°E

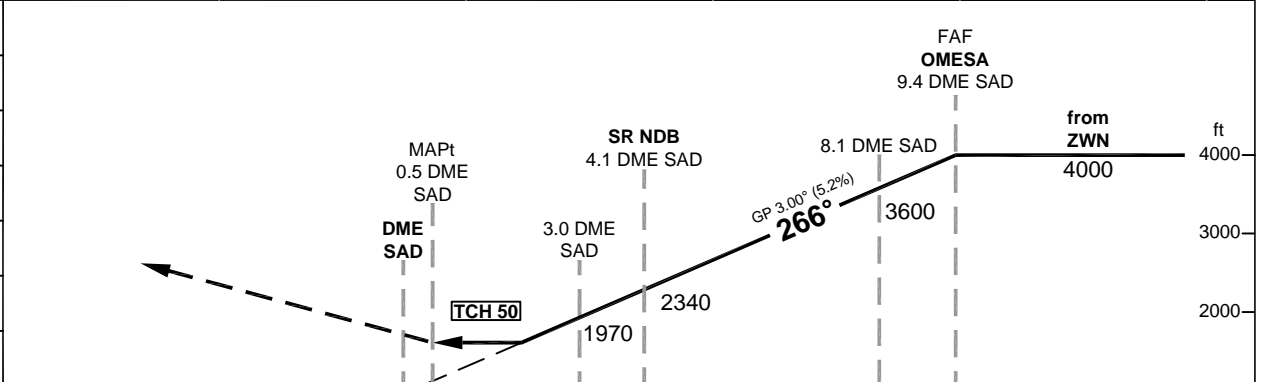
BEARINGS ARE MAGNETIC  
ALTITUDES; ELEVATIONS  
AND HEIGHTS IN ft

DME REQUIRED.



Correction: Variation, procedure.

OCA (OCH)	NDB-DME	CIRCLING*
CAT A	1610 (550)	1660
CAT B	1610 (550)	1720
CAT C	1610 (550)	1840
CAT D	1610 (550)	1840



\*NORTH OF AERODROME ONLY.

NM 6 5 4 3 2 1 0 1 2 3 4 5 6 7 8 9 10 11 12 13 1000

**MISSED APPROACH:** Climb straight ahead to 3.0 DME SAD or 2500, whichever is later; RT, track 359°; RT, intercept R028 GTQ to TOMPI climbing to 4000; RT to ZWN DVORDME.

DME SAD	2	3	4	5	6	7	8	9
DME THR	1.7	2.7	3.7	4.7	5.7	6.7	7.7	8.7
ALTITUDE	1650	1970	2290	2610	2930	3240	3560	3880

GS	kt	80	100	120	140	160	180
SR - MAPt (3.6 NM)	MIN:SEC	2:42	2:10	1:48	1:33	1:21	1:12
Rate of descent (5.2%)	ft / MIN	420	530	640	740	850	960

Timing not authorized for defining the MAPt.