

VATSIM Germany Instrument Approach Chart

**SAARBRÜCKEN
EDDR**
**ILS or LOC
RWY 27**

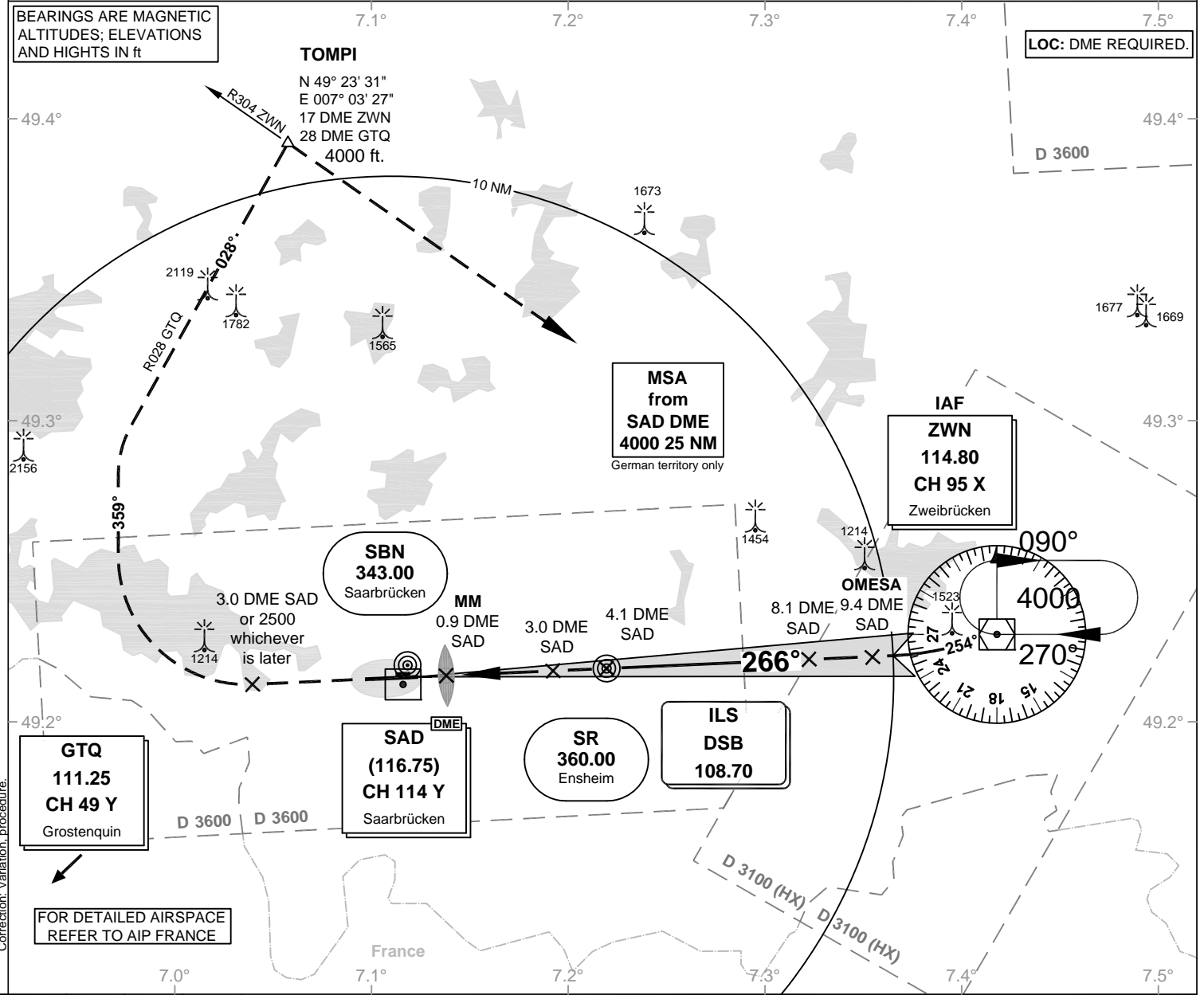
Elevation: 1058 ft.

ATIS: 125.300
Langen Radar: 129.670
Tower: 118.350
118.550

VAR: 1°E

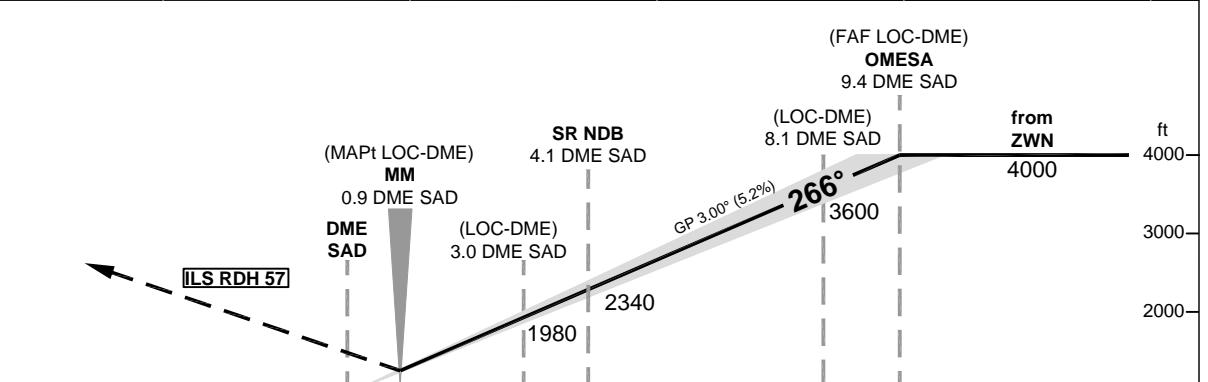
BEARINGS ARE MAGNETIC
ALTITUDES; ELEVATIONS
AND HEIGHTS IN ft

LOC: DME REQUIRED.



Correction: Variation, procedure.

OCA (OCH)	ILS CAT I	LOC DME	CIRCLING*
CAT A	1209 (153)	1490 (440)	1660
CAT B	1219 (163)	1490 (440)	1720
CAT C	1229 (173)	1490 (440)	1840
CAT D	1239 (183)	1490 (440)	1840



*NORTH OF AERODROME ONLY. NM 6 5 4 3 2 1 1056 1 2 3 4 5 6 7 8 9 10 11 12 13 1000

MISSED APPROACH: Climb straight ahead to 3.0 DME SAD or 2500, whichever is later; RT, track 359°; RT, intercept R028 GTQ to TOMPI climbing to 4000; RT to ZWN DVORDME.

DME SAD	2	3	4	5	6	7	8	9
DME THR	1.7	2.7	3.7	4.7	5.7	6.7	7.7	8.7
ALTITUDE	1660	1980	2300	2620	2930	3250	3570	3890

GS	kt	80	100	120	140	160	180
OM - THR (3.8 NM)	MIN:SEC	2:51	2:17	1:54	1:38	1:26	1:16
Rate of descent (5.2%)	ft / MIN	420	530	640	740	850	960

LOC-DME: Timing not authorized for defining the MAPt.