

VATSIM Germany Instrument Approach Chart



DÜSSELDORF EDDL

VOR RWY 23R

Elevation: THR23R 124 ft.

ATIS 123.775

Tower 118.300

Langen Radar 128.550

Ground (West) 121.900

VAR: 1°E

Director 128.650

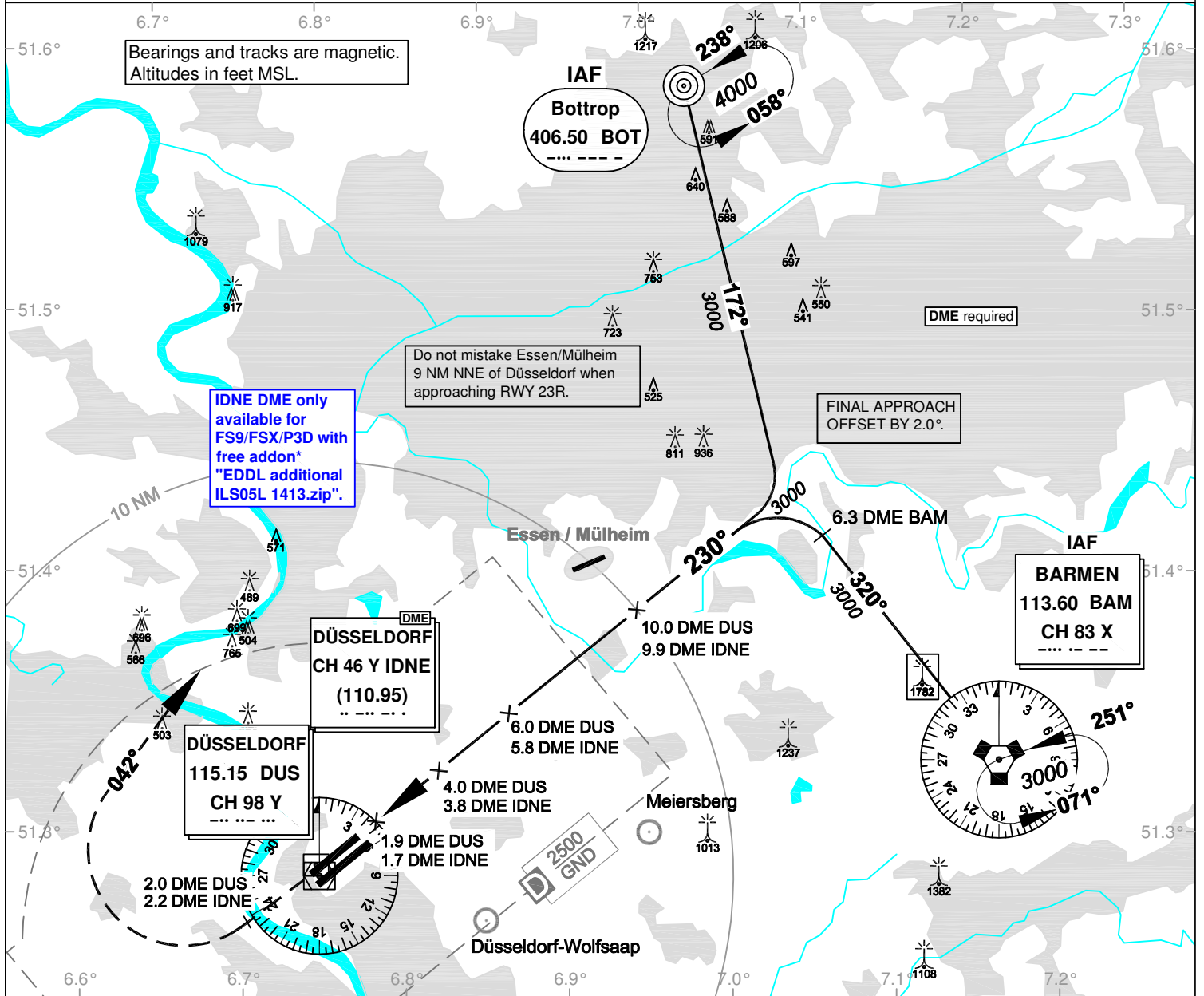
Ground (East) 121.600

Bearings and tracks are magnetic.
Altitudes in feet MSL.

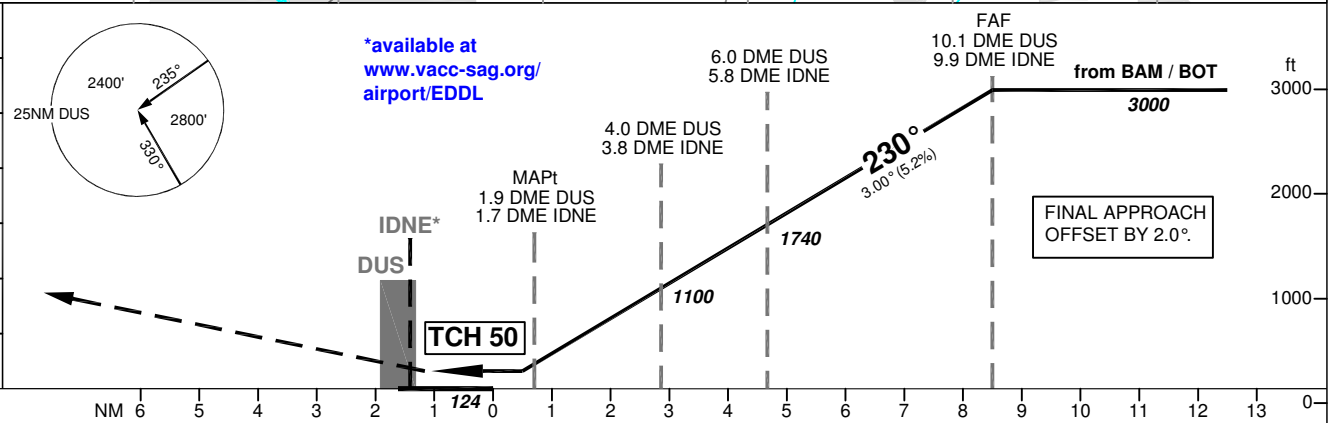
Do not mistake Essen/Mülheim
9 NM NNE of Düsseldorf when
approaching RWY 23R.

IDNE DME only
available for
FS9/FSX/P3D with
free addon*
"EDDL additional
ILS05L 1413.zip".

FINAL APPROACH
OFFSET BY 2.0°.



OCA (OCH)	VOR/DME
CAT A	700 (570)
CAT B	700 (570)
CAT C	700 (570)
CAT D	700 (570)
CAT E	
Large Aircraft	



MISSED APPROACH: Climb straight ahead to 2 DME DUS/2.2 DME IDNE; RT on track 042° to BOT, climbing to 4000.

DME DUS	3	4	5	6	7	8	9	
DME THR	1.9	2.9	3.9	4.9	5.9	6.9	7.9	
ALTITUDE	780	1100	1420	1740	2060	2380	2690	

GS	kt	80	100	120	140	160	180
6.0 DME DUS/5.8 DME IDNE - MAPt (4.0 NM)	MIN:SEC	3:05	2:28	2:03	1:45	1:32	1:22
Rate of descent (5.2%)	ft / MIN	420	530	640	740	850	960

Timing not authorized for defining the MAPt.