

# VATSIM Germany GPS / FMS RNAV Arrival Chart



## DÜSSELDORF EDDL

Transition Altitude: 5000 ft

ATIS 123.770  
Langen Radar 128.550  
121.350

Director 128.650  
Tower 118.300  
Ground 121.900

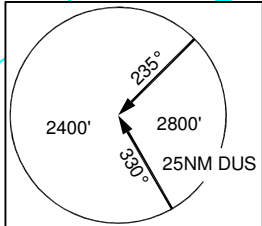
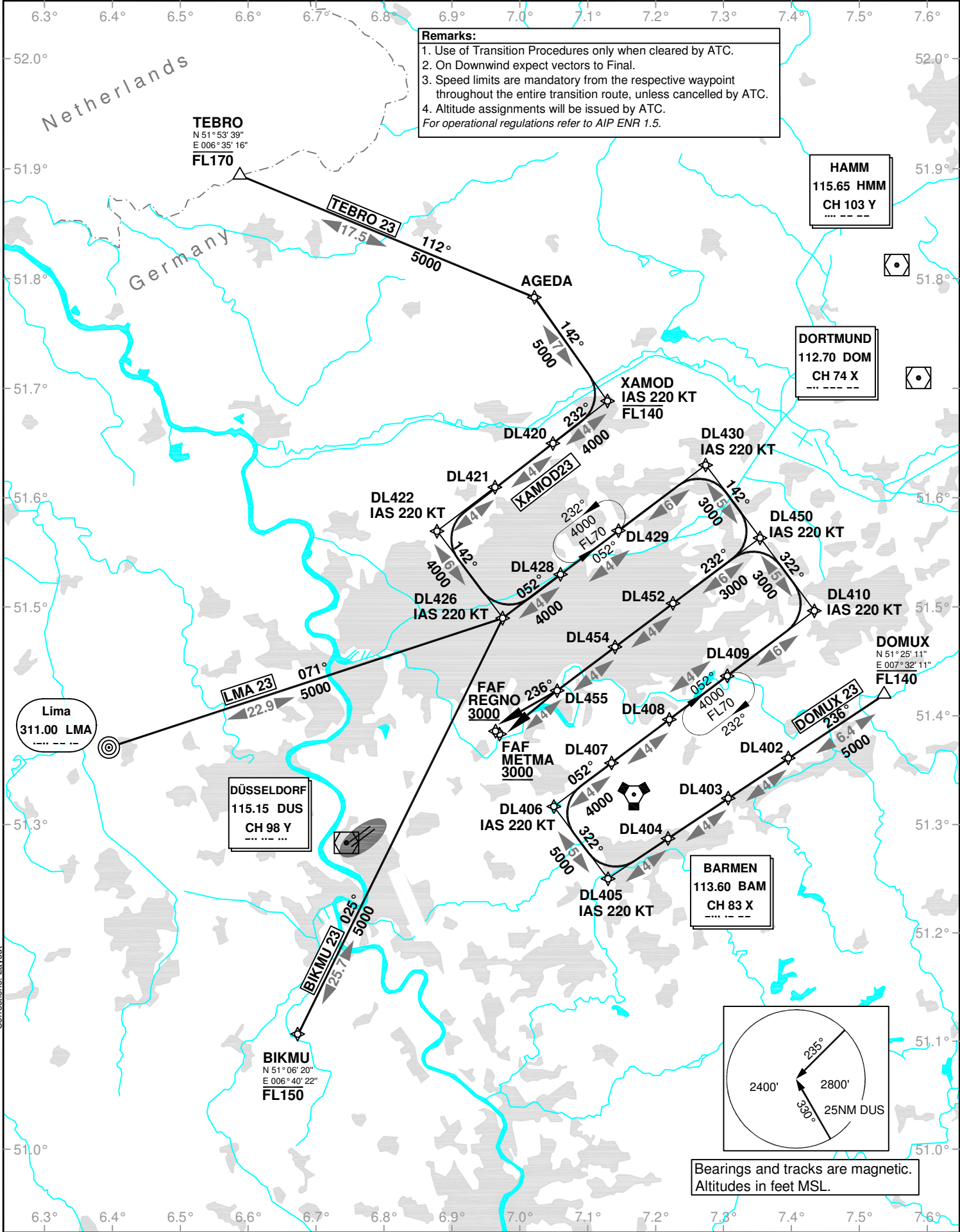
## Transition to Final Approach RWY 23L/R

VAR: 1°E

**Remarks:**

1. Use of Transition Procedures only when cleared by ATC.
2. On Downwind expect vectors to Final.
3. Speed limits are mandatory from the respective waypoint throughout the entire transition route, unless cancelled by ATC.
4. Altitude assignments will be issued by ATC.

For operational regulations refer to AIP ENR 1.5.



Bearings and tracks are magnetic.  
Altitudes in feet MSL.

Corrections: Layout