

VATSIM Germany Standard Instrument Departure Chart



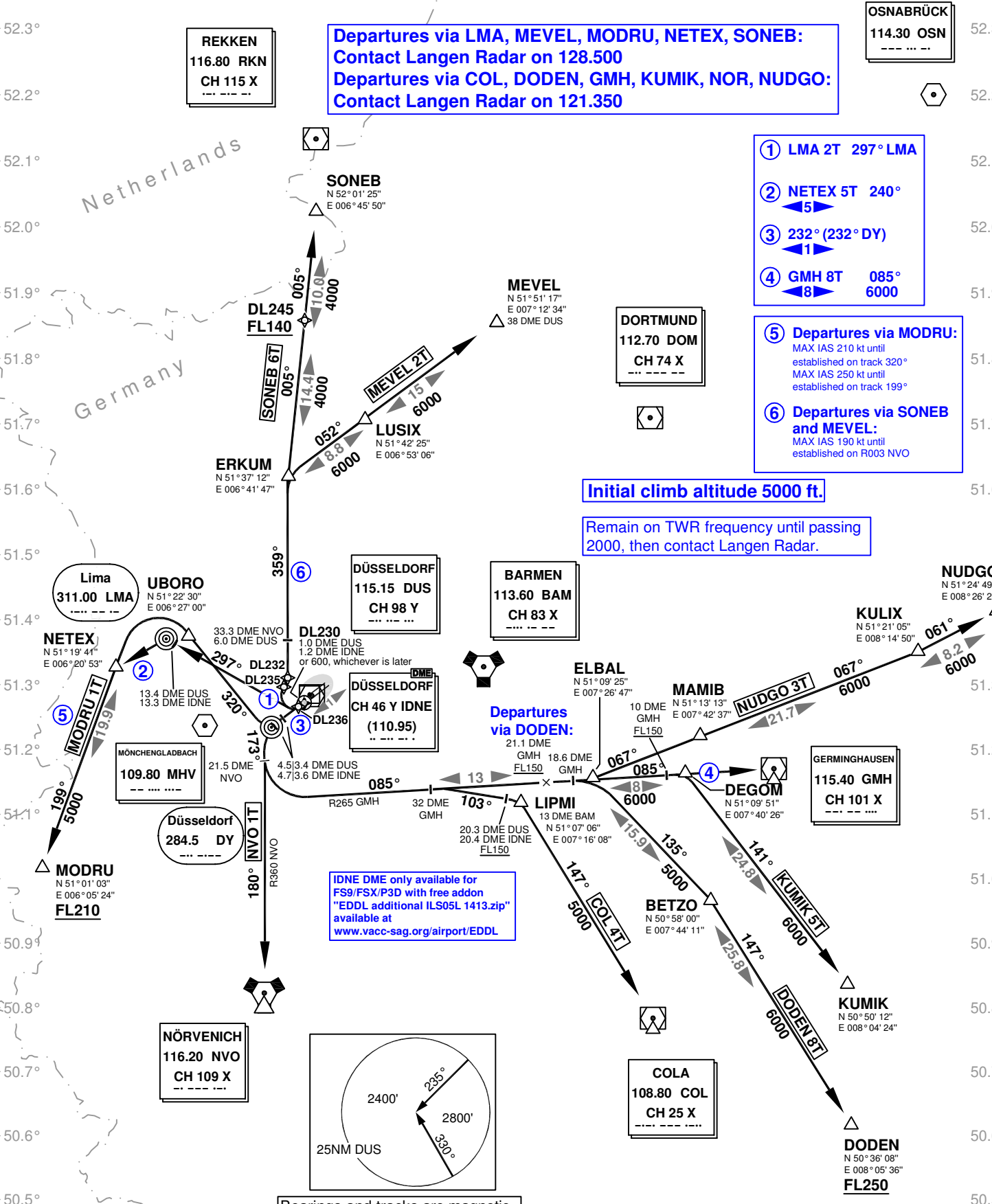
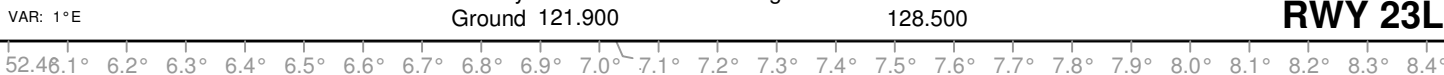
DÜSSELDORF EDDL

Transition Altitude: 5000 ft.

ATIS 123.770
Delivery 121.770
Ground 121.900

Tower 118.300
Langen Radar 121.350
128.500

SID RWY 23L



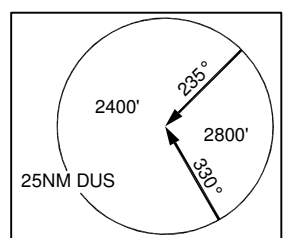
Departures via LMA, MEVEL, MODRU, NETEX, SONEB:
Contact Langen Radar on 128.500
Departures via COL, DODEN, GMH, KUMIK, NOR, NUDGO:
Contact Langen Radar on 121.350

- ① LMA 2T 297° LMA
- ② NETEX 5T 240°
- ③ 232° (232° DY)
- ④ GMH 8T 085°

- ⑤ Departures via MODRU:
MAX IAS 210 kt until established on track 320°
MAX IAS 250 kt until established on track 199°
- ⑥ Departures via SONEB and MEVEL:
MAX IAS 190 kt until established on R003 NVO

Initial climb altitude 5000 ft.
Remain on TWR frequency until passing 2000, then contact Langen Radar.

IDNE DME only available for FS9/FSX/P3D with free addon "EDDL additional ILS05L 1413.zip" available at www.vacc-sag.org/airport/EDDL



Bearings and tracks are magnetic.
Altitudes in feet MSL.

For procedure details consult "EDDL Airportinfo"