

VATSIM Germany Instrument Approach Chart



DÜSSELDORF EDDL

Elevation: THR23L 138 ft.

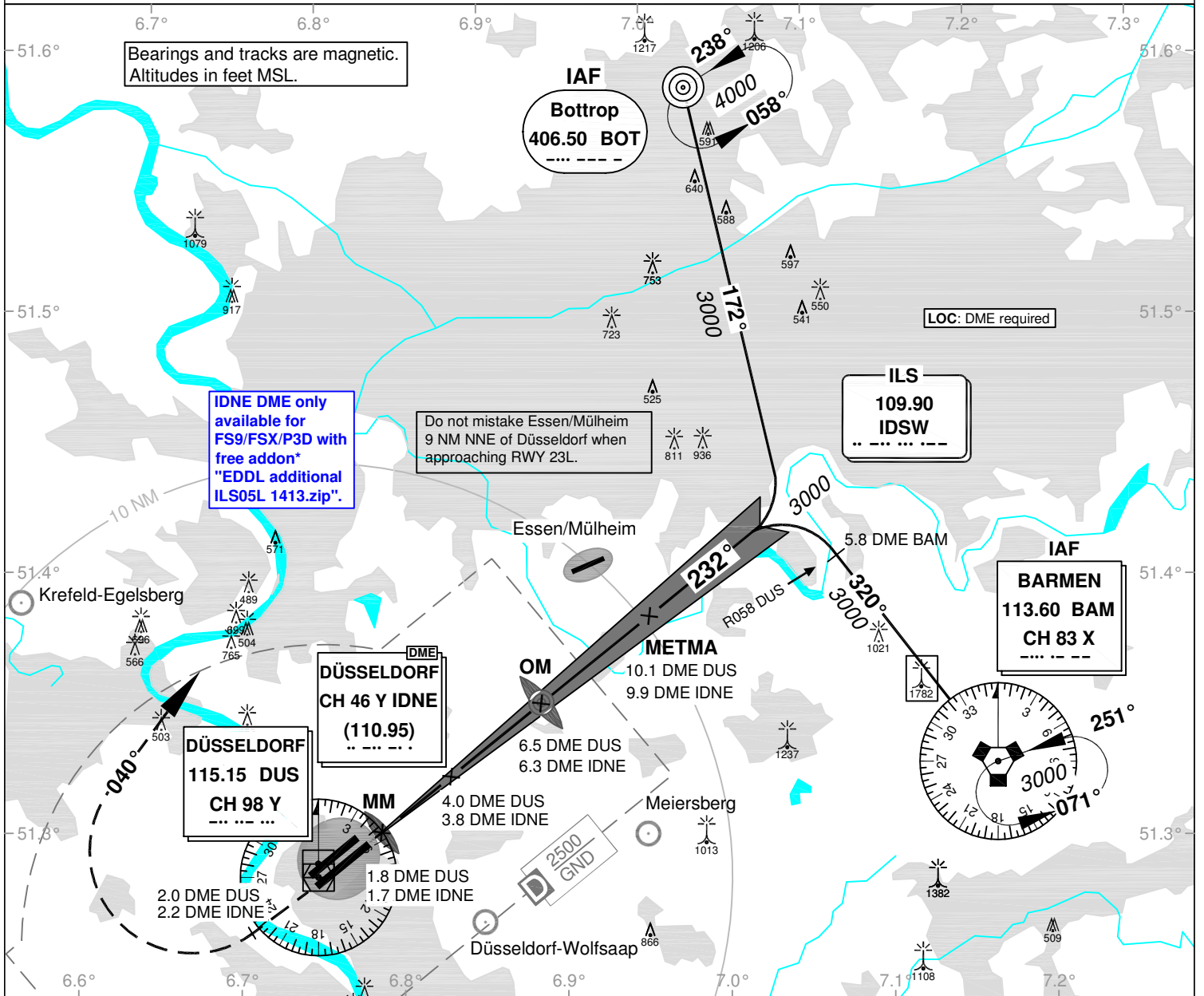
ATIS 123.775
Langen Radar 128.550
Director 128.650

Tower 118.300
Ground (West) 121.900
Ground (East) 121.600

ILS CAT II & III or LOC RWY 23L

VAR: 1°E

Bearings and tracks are magnetic.
Altitudes in feet MSL.



IDNE DME only available for FS9/FSX/P3D with free addon* "EDDL additional ILS05L 1413.zip".

Do not mistake Essen/Mülheim 9 NM NNE of Düsseldorf when approaching RWY 23L.

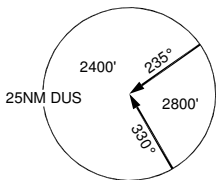
LOC: DME required

IAF BARMEN
113.60 BAM
CH 83 X

DÜSSELDORF
CH 46 Y IDNE
(110.95)

DÜSSELDORF
115.15 DUS
CH 98 Y

2500 GND



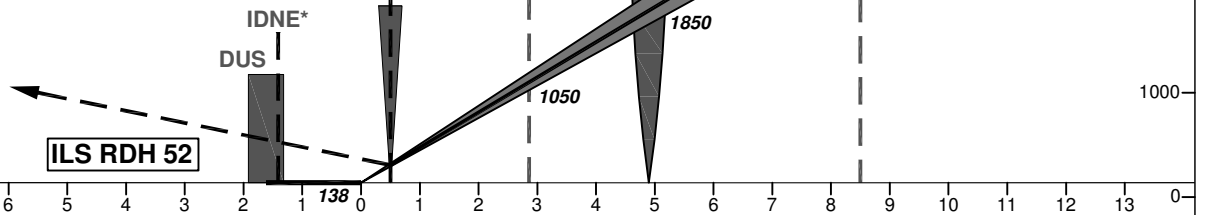
*available at www.vacc-sag.org/airport/EDDL

(LOC-DME)
4.0 DME DUS
3.8 DME IDNE

METMA
(FAF LOC-DME)
10.1 DME DUS
9.9 DME IDNE

Corrections: DME reading

OCA (OCH)	ILS CAT I	ILS CAT II	LOC DME
CAT A	279 (141)	187 (49)	520 (380)
CAT B	289 (151)	203 (65)	520 (380)
CAT C	299 (161)	216 (78)	520 (380)
CAT D	309 (171)	229 (91)	520 (380)
CAT E			
Large Aircraft	309 (171)	233 (95)	



MISSED APPROACH: Climb straight ahead to 2.0 DME DUS/2.2 DME IDNE; RT on track 040° to BOT, climbing to 4000.

DME VOR DUS	3	4	5	6	7	8	9	10	
DME THR	1.7	2.7	3.7	4.7	5.7	6.7	7.7	8.7	
ALTITUDE	740	1050	1370	1690	2010	2330	2650	2960	

GS	kt	80	100	120	140	160	180
OM - THR (5.2 NM)	MIN:SEC	3:54	3:07	2:36	2:14	1:57	1:44
Rate of descent (5.2%)	ft / MIN	420	530	640	740	850	960

CAT IIIa/b (MNM RVR 75m) approved.

LOC-DME: Timing not authorized for defining the MAPt.