

# VATSIM Germany Instrument Approach Chart



## DÜSSELDORF EDDL

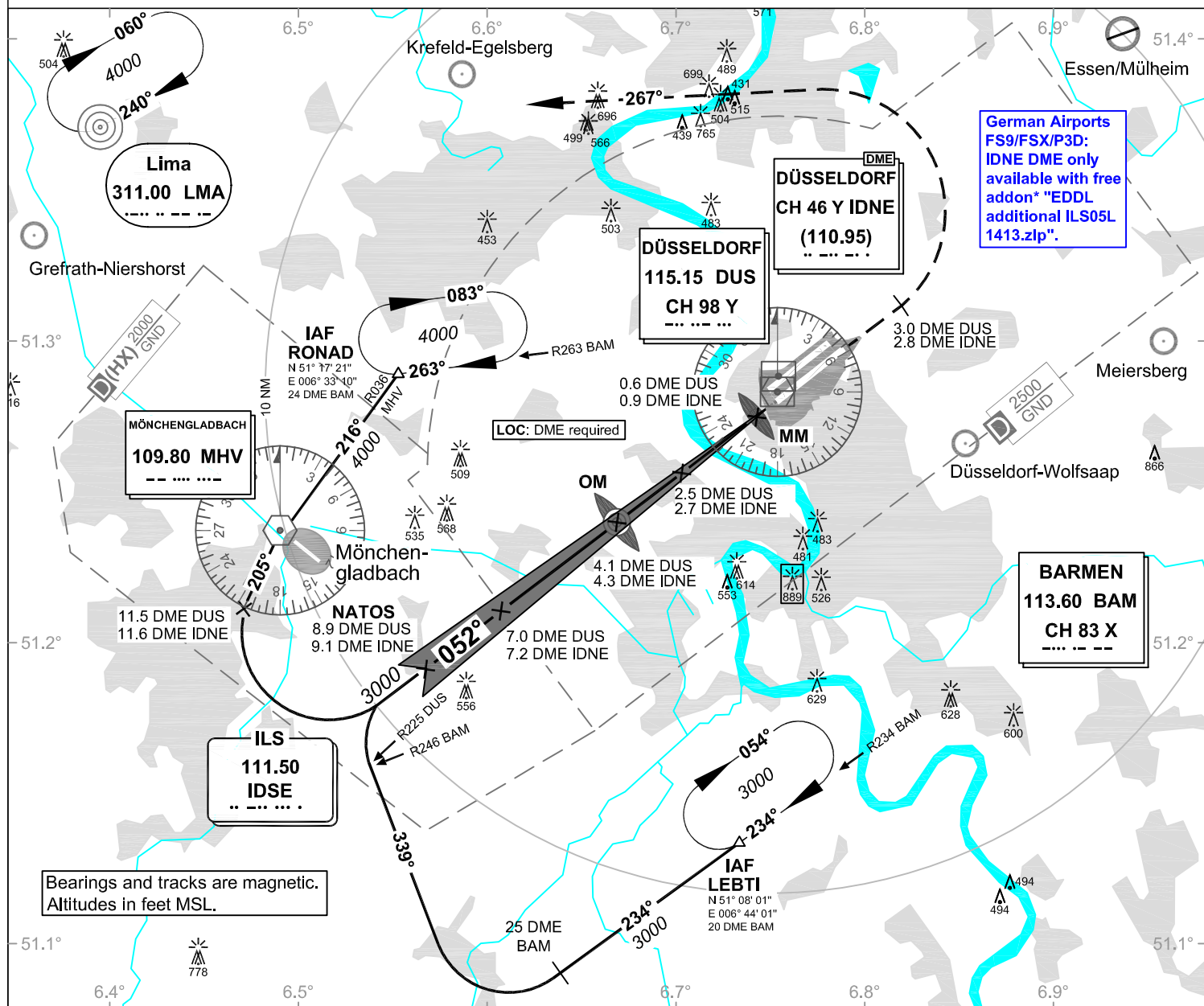
Elevation: THR05L 121 ft.

ATIS 123.775  
Langen Radar 128.550  
Director 128.650

Tower 118.300  
Ground (West) 121.900  
Ground (East) 121.600

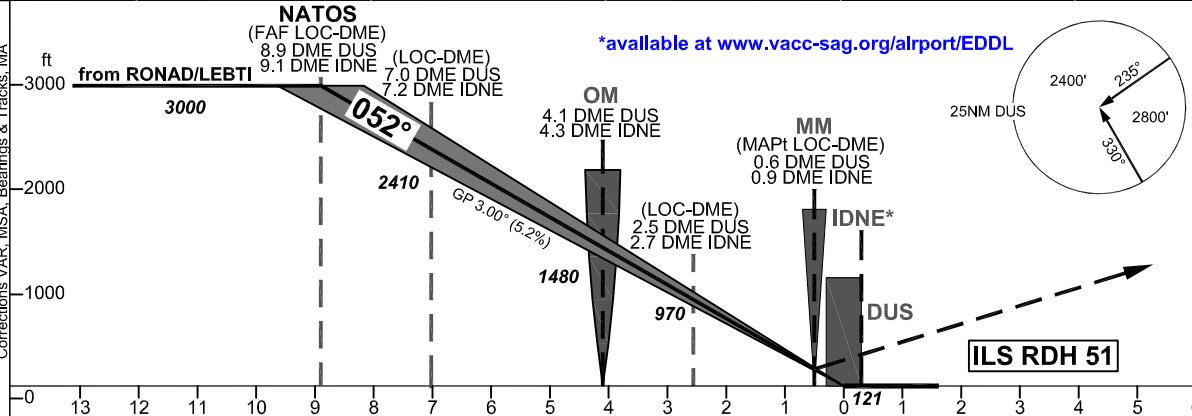
### ILS CAT II & III or LOC RWY 05R

VAR: 1°E



German Airports  
FS9/FSX/P3D:  
IDNE DME only  
available with free  
addon\* "EDDL  
additional ILS05L  
1413.zlp".

Bearings and tracks are magnetic.  
Altitudes in feet MSL.



OCA (OCH)	ILS CAT I	ILS CAT II	LOC DME
CAT A	260 (139)	172 (51)	500 (380)
CAT B	270 (149)	188 (67)	570 (450)
CAT C	280 (159)	201 (80)	570 (450)
CAT D	290 (169)	214 (93)	570 (450)
CAT E			
Large Aircraft	290 (169)	214 (93)	

**MISSED APPROACH:** Climb straight ahead to 3 DME DUS/2.8 DME IDNE; LT on track 267°  
LMA to LMA, climbing to 4000.

DME VOR DUS	8	7	6	5	4	3	2
DME THR	8.0	7.0	6.0	5.0	4.0	3.0	2.0
ALTITUDE	2720	2410	2090	1770	1450	1130	810

GS	kt	80	100	120	140	160	180
OM - THR (4.1 NM)	MIN:SEC	3:05	2:28	2:03	1:45	1:32	1:22
Rate of descent (5.2%)	ft / MIN	420	530	640	740	850	960

CAT IIIa/b (MNM RVR 75m) approved.

LOC-DME: Timing not authorized for defining the MAPT.