

VATSIM Germany Standard Instrument Departure Chart



**COLOGNE / BONN
EDDK**

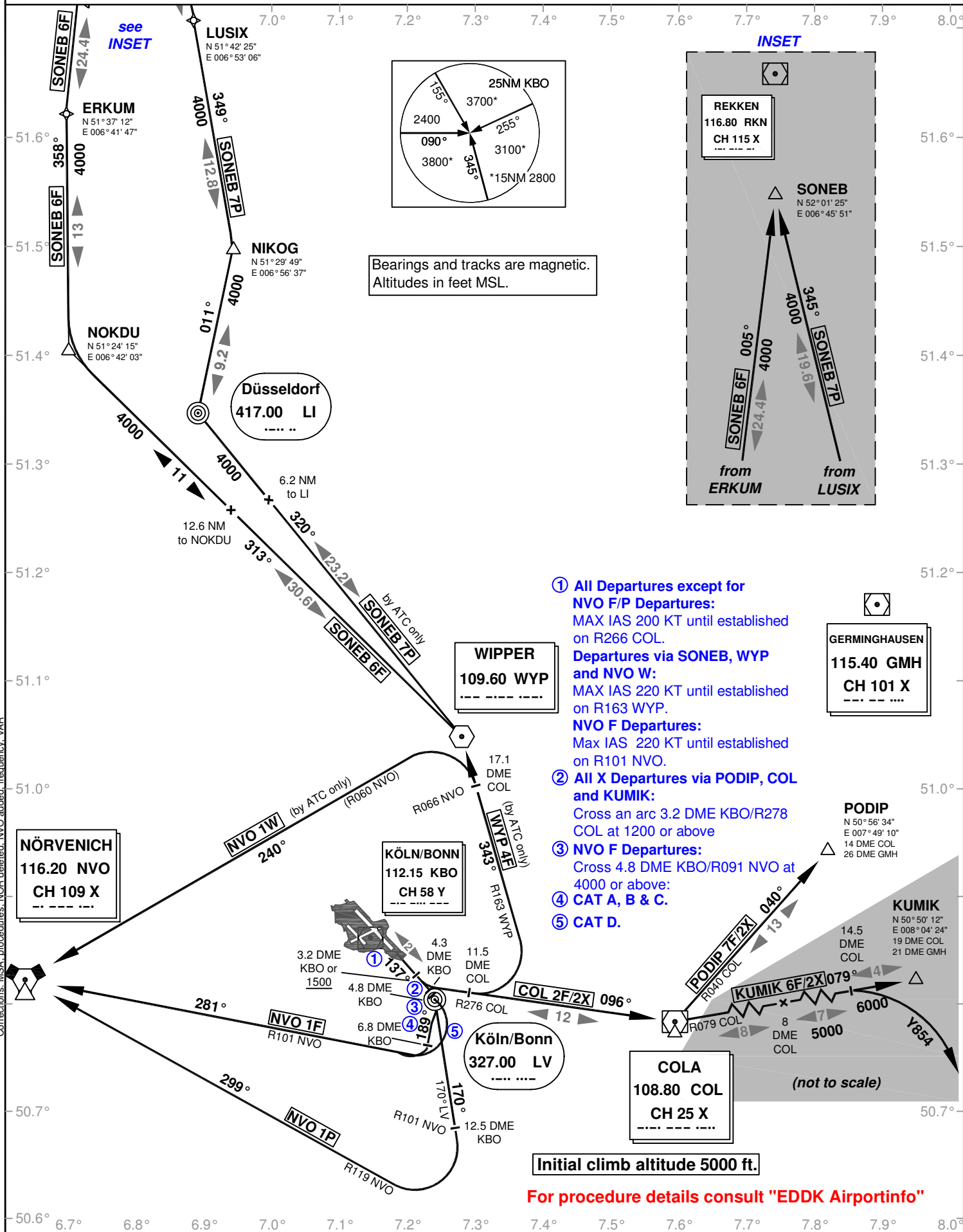
Transition Altitude: 5000 ft.

ATIS 124.100
Delivery 121.850
Ground 121.720

Tower 124.970
Langen Radar 135.350

**SID
RWY 14L**

VAR: 1°E



Corrections: MSA, procedures: NOR deleted, NVO added, frequency, VAR