

VATSIM Germany Standard Instrument Departure Chart



MÜNSTER / OSNABRÜCK EDDG

Transition Altitude: 5000 ft.

ATIS 127.170

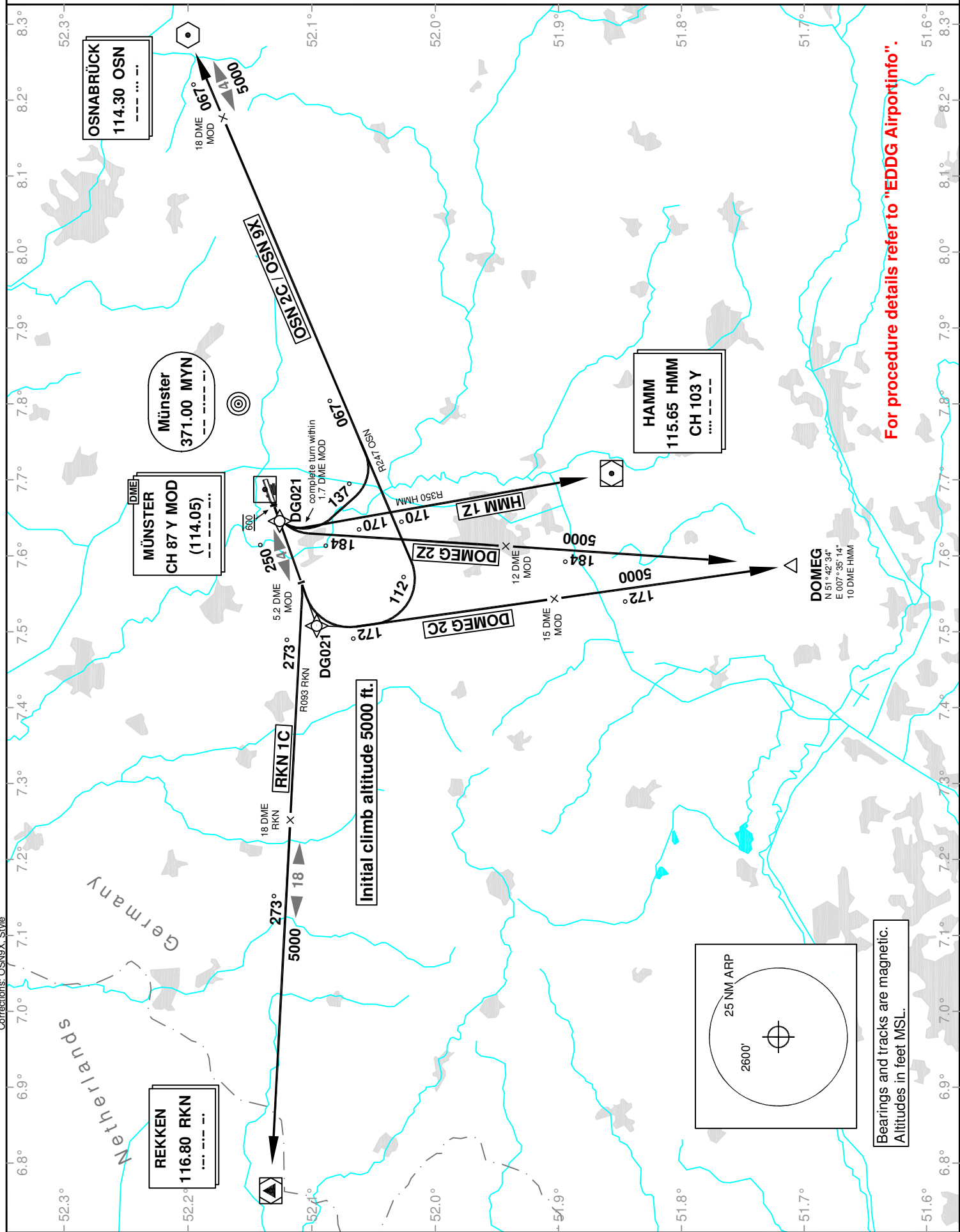
Langen Radar 129.300

Ground 121.870

Tower 129.800

VAR: 1°E

SID RWY 25



Corrections: OSN9X - SIVIE