

VATSIM Germany GPS / FMS RNAV Arrival Chart

Frankfurt Main (East) EDDF

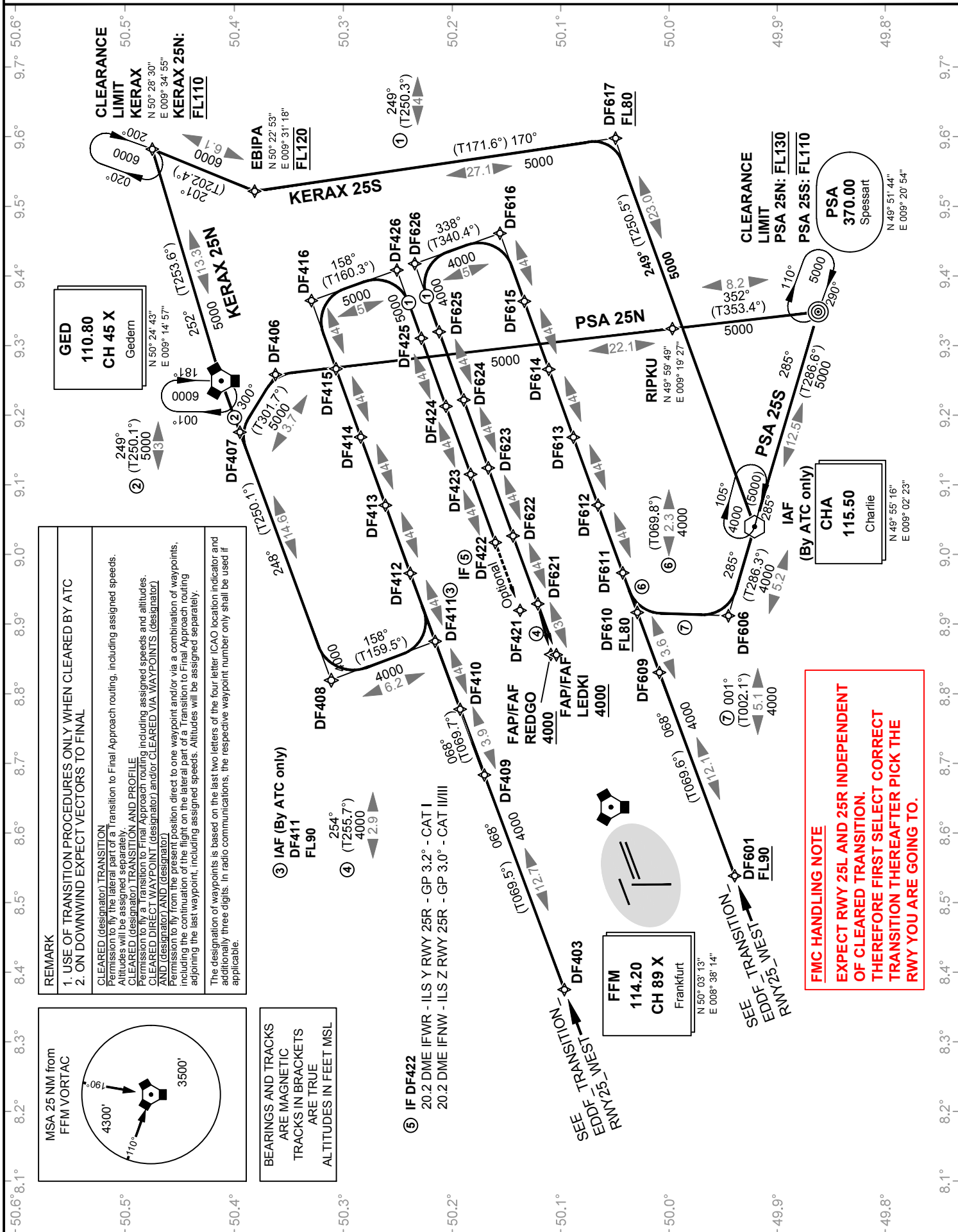
Transition Altitude: 5000 ft.

ATIS 118.020

Langen Radar (N) 120.800
Langen Radar (S) 125.350

Transition to Final Approach RWY 25L / 25C / 25R

VAR: 1° E



REMARK

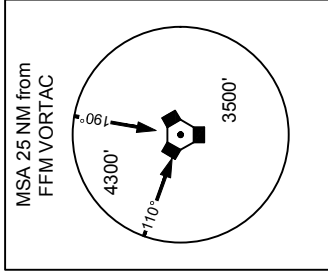
1. USE OF TRANSITION PROCEDURES ONLY WHEN CLEARED BY ATC
2. ON DOWNWIND EXPECT VECTORS TO FINAL

CLEARED (designator) TRANSITION
Permission to fly the lateral part of a Transition to Final Approach routing, including assigned speeds. Altitudes will be assigned separately.

CLEARED (designator) TRANSITION AND PROFILE
Permission to fly a Transition to Final Approach routing including assigned speeds and altitudes.

CLEARED DIRECT WAYPOINT (designator) and/or CLEARED VIA WAYPOINTS (designator) AND (designator) AND (designator)
Permission to fly from the present position direct to one waypoint and/or via a combination of waypoints, including the continuation of the flight on the lateral part of a Transition to Final Approach routing adjoining the last waypoint, including assigned speeds. Altitudes will be assigned separately.

The designation of waypoints is based on the last two letters of the four letter ICAO location indicator and additionally three digits. In radio communications, the respective waypoint number only shall be used if applicable.



BEARINGS AND TRACKS ARE MAGNETIC TRACKS IN BRACKETS ARE TRUE ALTITUDES IN FEET MSL

IF DF422
20.2 DME IFWR - ILS Y RWY 25R - GP 3.2° - CAT I
20.2 DME IFNW - ILS Z RWY 25R - GP 3.0° - CAT III/II

FMC HANDLING NOTE
EXPECT RWY 25L AND 25R INDEPENDENT OF CLEARED TRANSITION. THEREFORE FIRST SELECT CORRECT TRANSITION THEREAFTER PICK THE RWY YOU ARE GOING TO.

