

# VATSIM Germany GPS / FMS RNAV Arrival Chart

# Frankfurt Main (East) EDDF

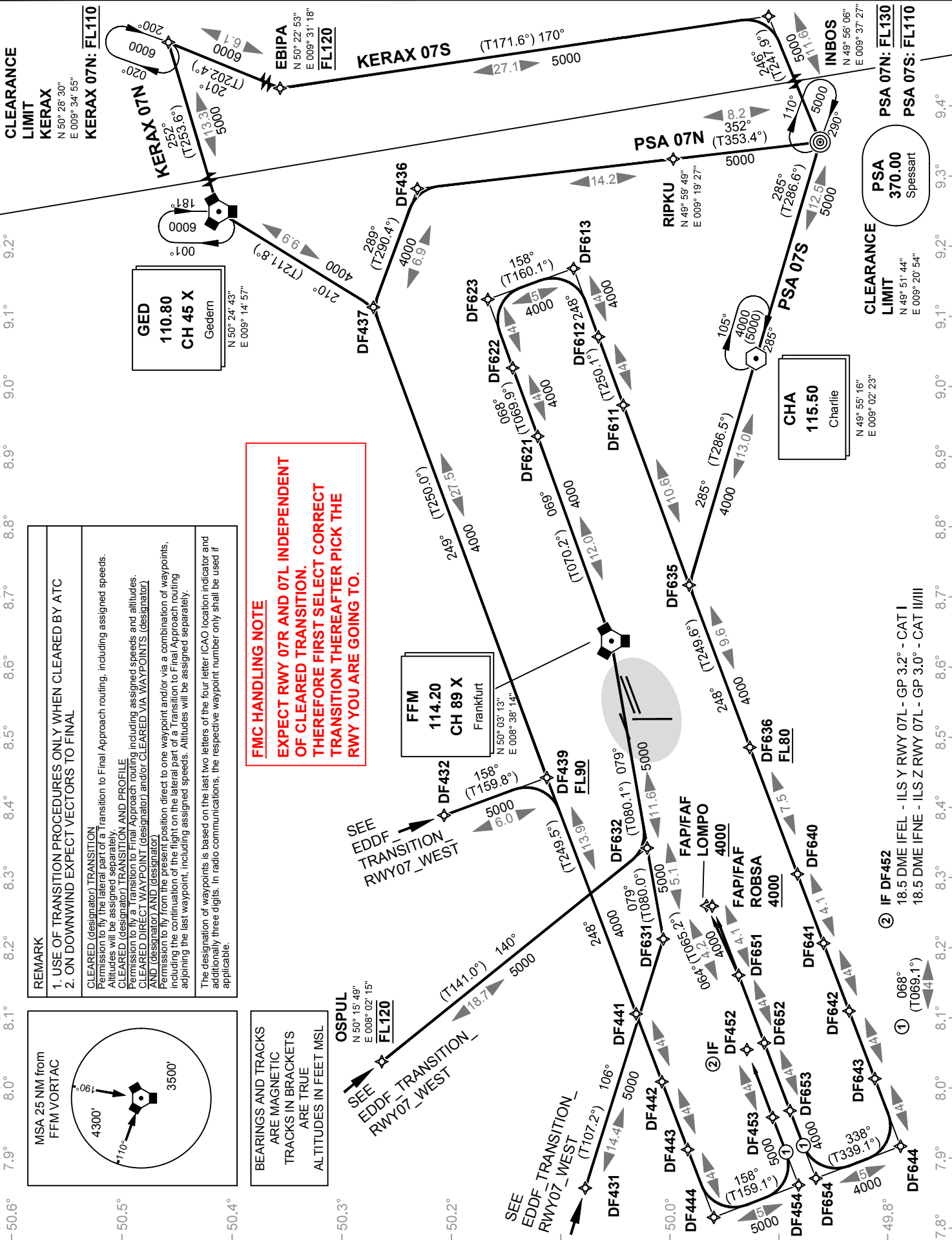
Transition Altitude: 5000 ft.

ATIS 118.020

Langen Radar (N) 120.800  
Langen Radar (S) 125.350

## Transition to Final Approach RWY 07L / 07C / 07R

VAR: 1° E



**REMARK**

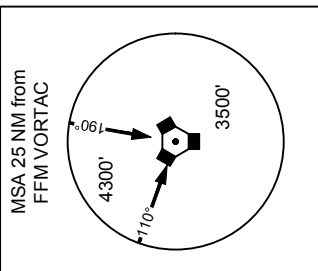
1. USE OF TRANSITION PROCEDURES ONLY WHEN CLEARED BY ATC  
 2. ON DOWNWIND EXPECT VECTORS TO FINAL

**CLEARED (designator) TRANSITION**  
 Permission to fly the lateral part of a Transition to Final Approach routing, including assigned speeds. Altitudes will be assigned separately.

**CLEARED (designator) TRANSITION AND PROFILE**  
 Permission to fly a Transition to Final Approach routing including assigned speeds and altitudes.

**CLEARED DIRECT WAYPOINT (designator) and/or CLEARED VIA WAYPOINTS (designator) AND (designator) AND (designator)**  
 Permission to fly from the present position direct to one waypoint and/or via a combination of waypoints, including the continuation of the flight on the lateral part of a Transition to Final Approach routing adjoining the last waypoint, including assigned speeds. Altitudes will be assigned separately.

The designation of waypoints is based on the last two letters of the four letter ICAO location indicator and additionally three digits. In radio communications, the respective waypoint number only shall be used if applicable.



**BEARINGS AND TRACKS ARE MAGNETIC**  
**TRACKS IN BRACKETS ARE TRUE**  
**ALTITUDES IN FEET MSL**

① 068° (T069.1°)  
 ② IF DF452  
 18.5 DME IFEL - ILS Y RWY 07L - GP 3.2° - CAT I  
 18.5 DME IFNE - ILS Z RWY 07L - GP 3.0° - CAT II/III

