

VATSIM Germany Standard Instrument Departure Chart

FRANKFURT MAIN EDDF

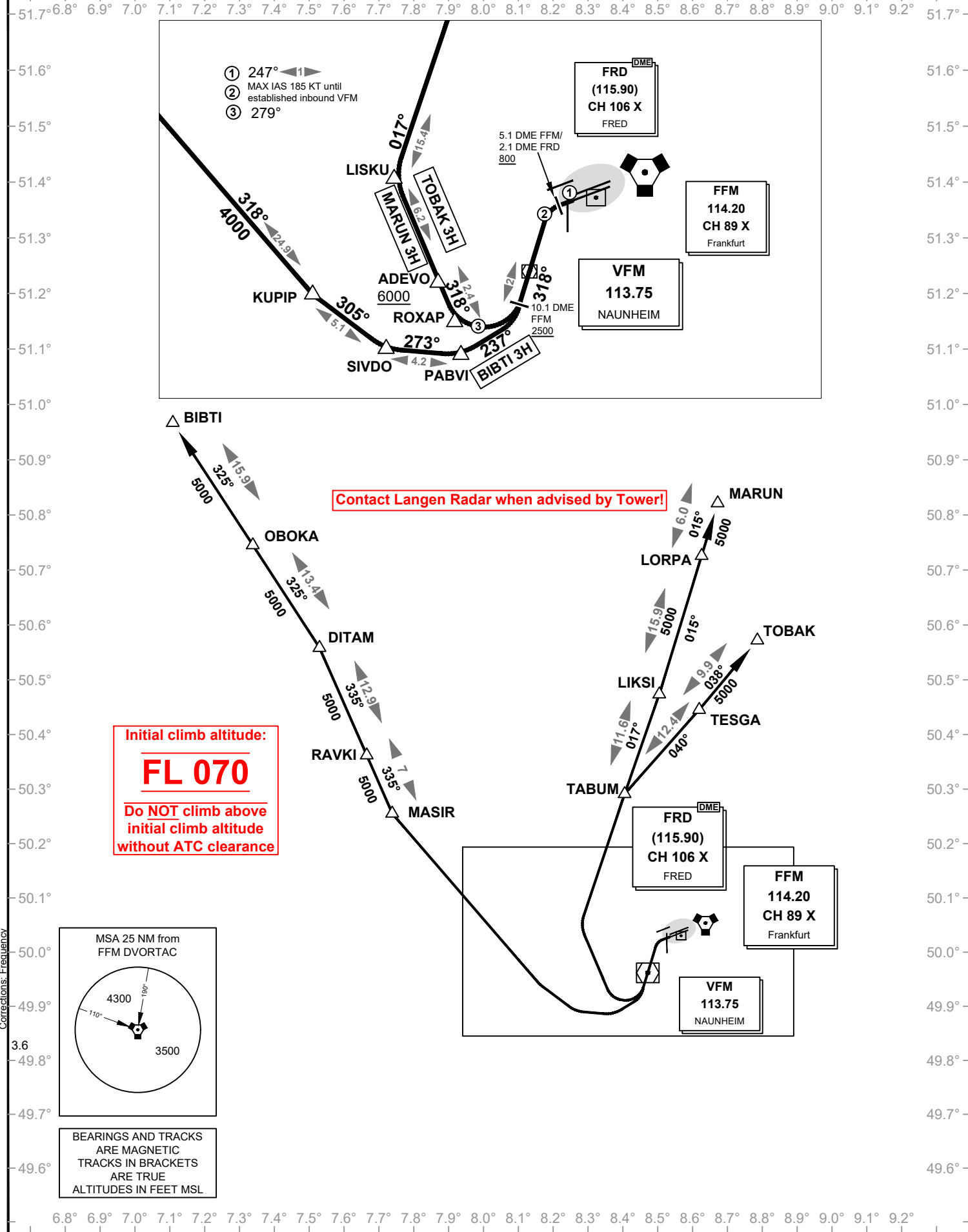
SID HOTEL RWY 25 L

Transition Altitude: 5000 ft

ATIS 118.050
Delivery 121.900
Apron 121.750

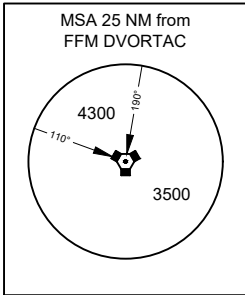
TOWER 119.900
Langen Radar (N) 120.800
Langen Radar 120.150

VAR: 2° E



Initial climb altitude:
FL 070
Do NOT climb above
initial climb altitude
without ATC clearance

Contact Langen Radar when advised by Tower!



BEARINGS AND TRACKS
ARE MAGNETIC
TRACKS IN BRACKETS
ARE TRUE
ALTITUDES IN FEET MSL

VATSIM Germany Standard Instrument Departure Chart

FRANKFURT MAIN EDDF

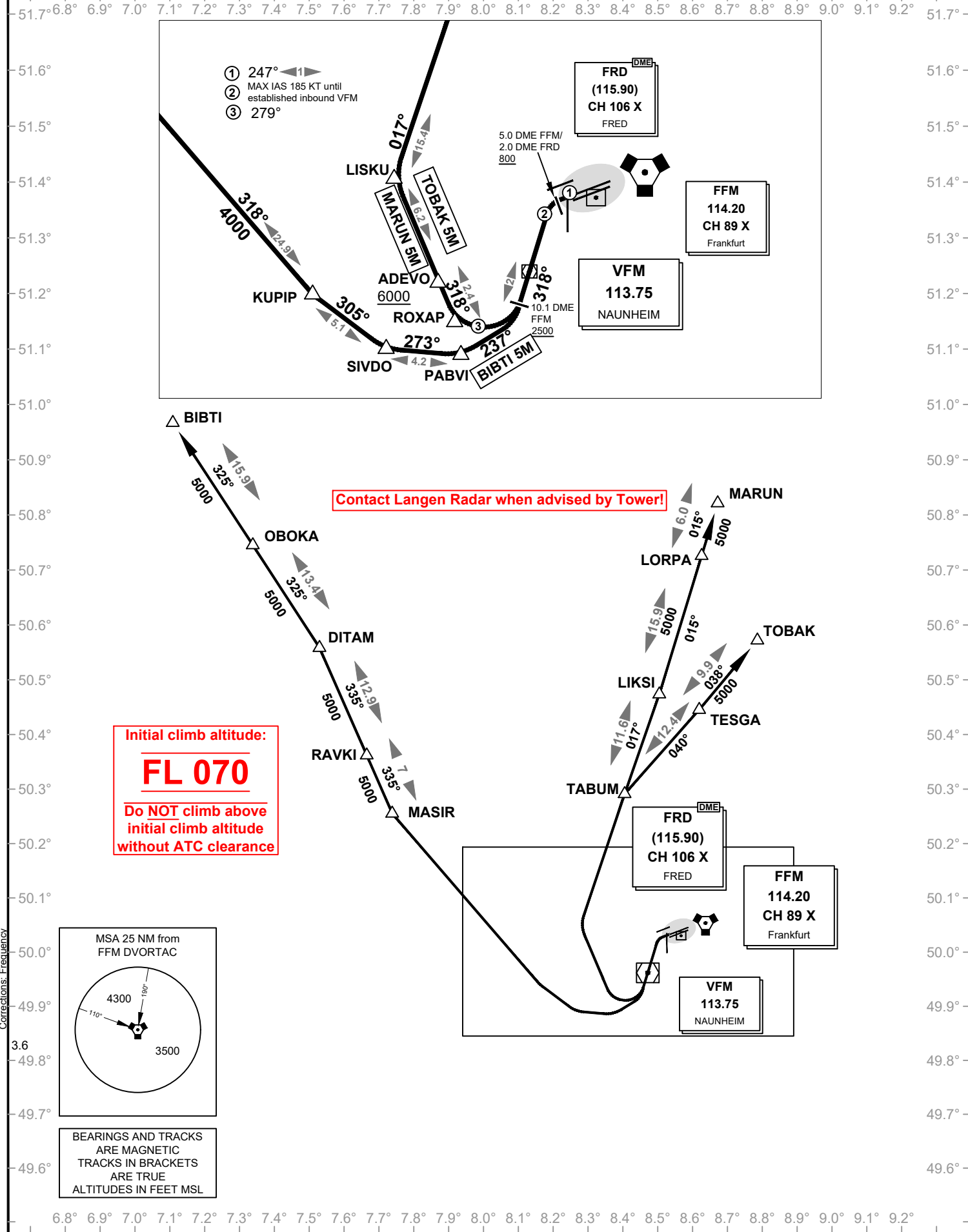
SID MIKE RWY 25 C

Transition Altitude: 5000 ft

ATIS 118.050
Delivery 121.900
Apron 121.750

TOWER 119.900
Langen Radar (N) 120.800
Langen Radar 120.150

VAR: 2° E



VATSIM Germany Standard Instrument Departure Chart

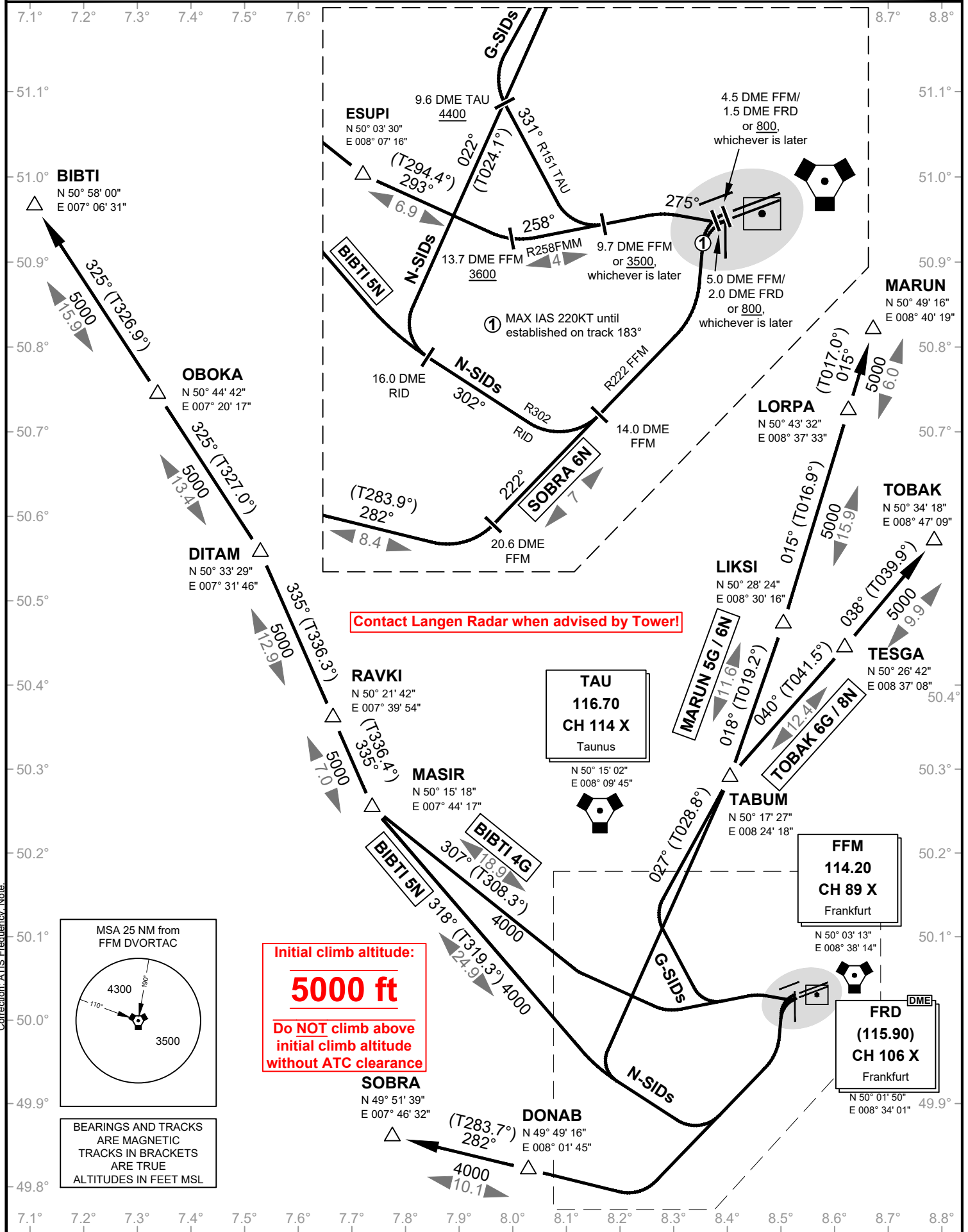
Frankfurt Main (North) EDDF

Transition Altitude: 5000 ft.

Delivery (Initial Call) 121.900	ATIS 118.020
Apron 121.750	Ground 121.800
121.850	Tower 119.900
121.950	Langen Radar 120.150

SID G / N RWY 25L / 25C

VAR: 2° E



Correction: ATIS Frequency Note.

For flight simulator use only. Not to be used for real world flight.

VATSIM Germany Standard Instrument Departure Chart

Frankfurt Main (South) EDDF

Transition Altitude: 5000 ft

Delivery (Initial Call) 121.900
Apron 121.750
Tower 121.850
Langen Radar 121.950

ATIS 118.020
Ground 121.800
Tower 121.900
Langen Radar 120.150

SID F / G / P
RWY 25L / 25C

