

# VATSIM Germany Standard Instrument Departure Chart

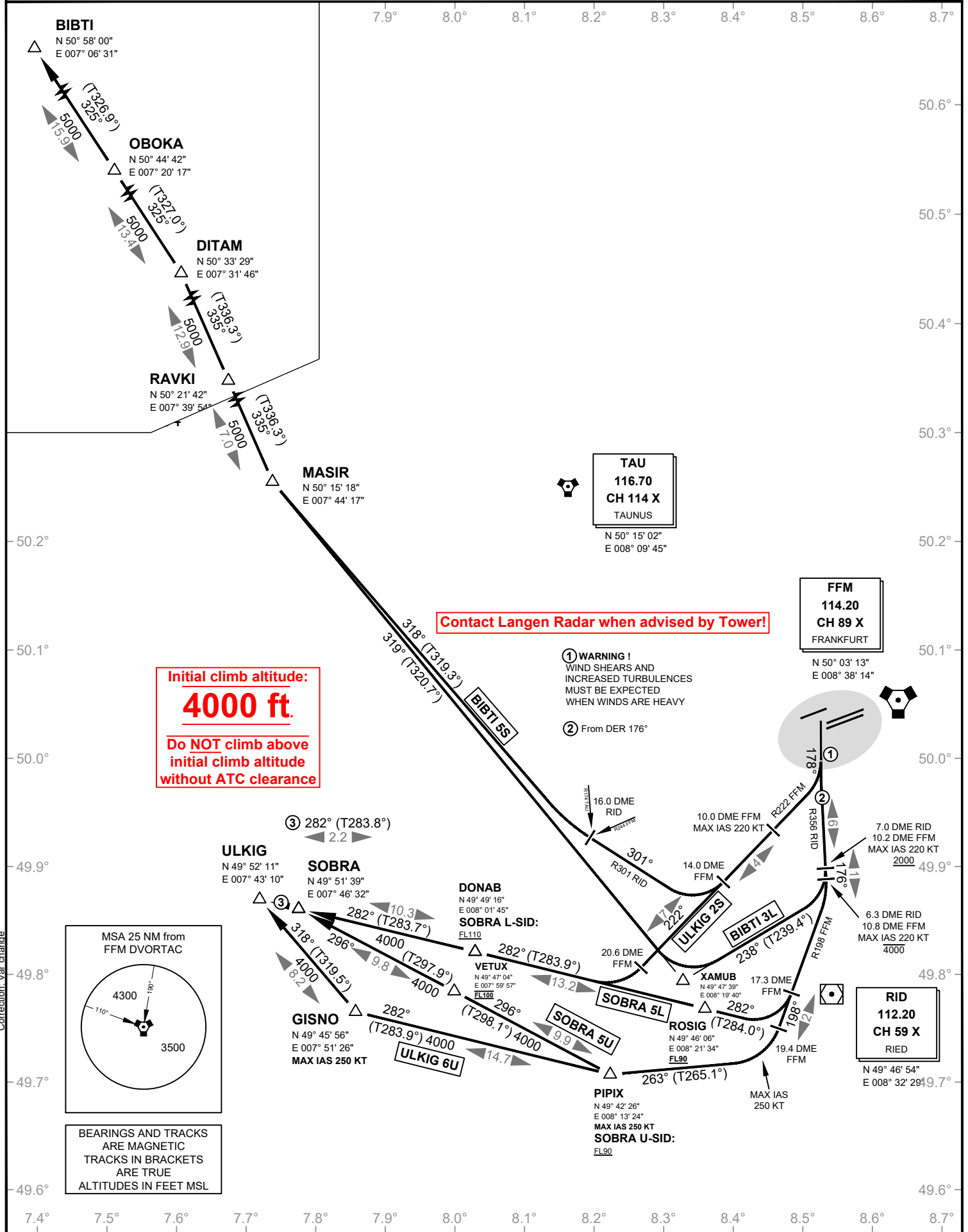
## Frankfurt Main (North , West) EDDF

Transition Altitude: 5000 ft.

Delivery (Initial Call)	121.900	ATIS	118.020
Apron	121.750	Ground	121.800
	121.850	Tower	119.900
	121.950	Langen Radar	120.150

### SID L / S / U RWY 18

VAR: 2° E

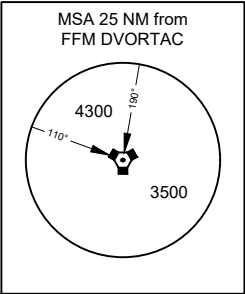


**Initial climb altitude:**  
**4000 ft.**  
Do NOT climb above  
initial climb altitude  
without ATC clearance

Contact Langen Radar when advised by Tower!

**1** WARNING!  
WIND SHEARS AND  
INCREASED TURBULENCES  
MUST BE EXPECTED  
WHEN WINDS ARE HEAVY

**2** From DER 176°



BEARINGS AND TRACKS  
ARE MAGNETIC  
TRACKS IN BRACKETS  
ARE TRUE  
ALTITUDES IN FEET MSL

# VATSIM Germany

## Standard Instrument Departure Chart

Transition Altitude: 5000 ft.

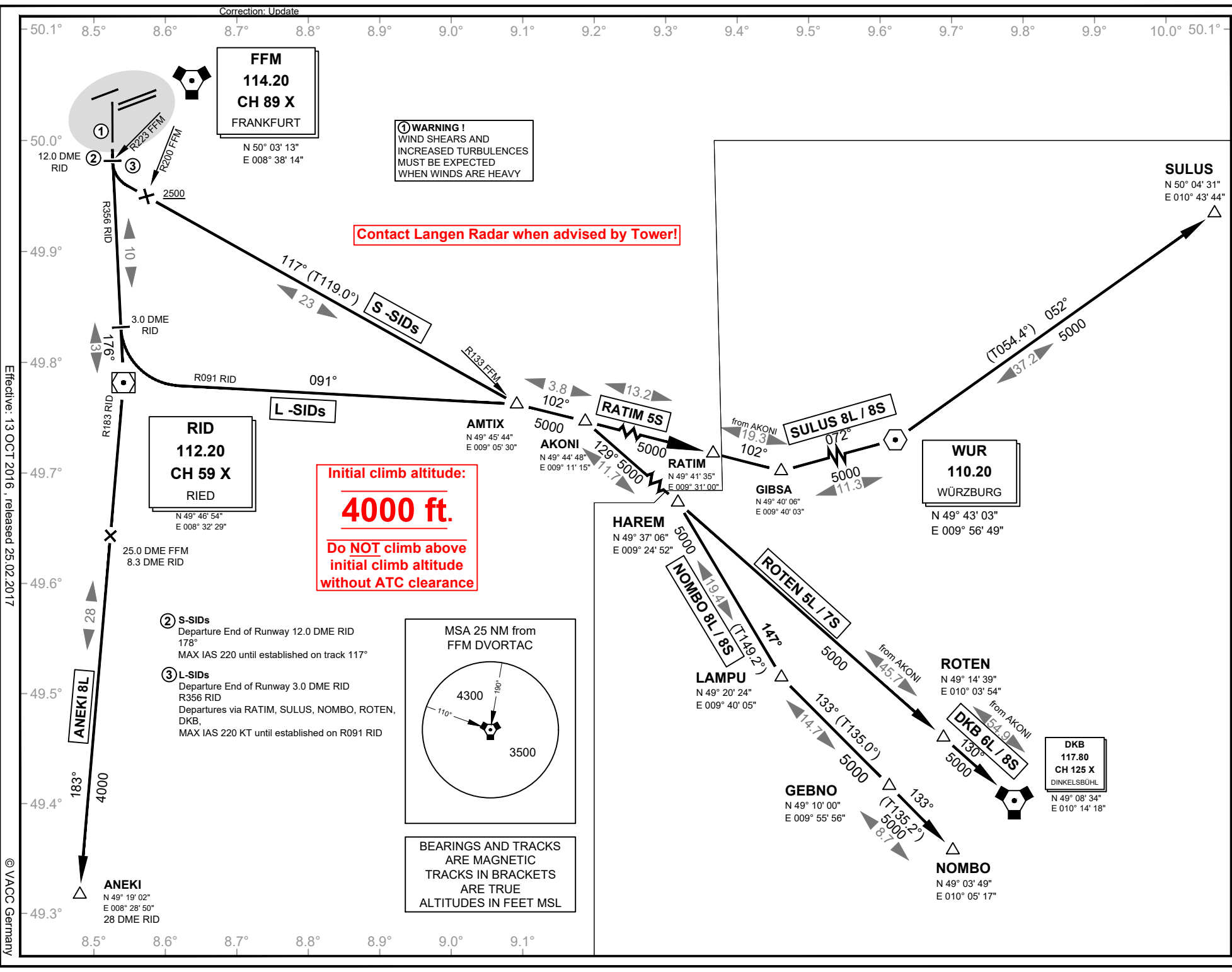
VAR: 2° E

Delivery (Initial Call) 121.900  
 Apron 121.750  
 Tower 121.850  
 Langen Radar 121.950

## Frankfurt Main (South, East)

EDDF

SID L / S  
 RWY 18



Effective: 13 OCT 2016, released 25 02 2017

© VAACC Germany

For flight simulator use only. Not to be used for real world flight.

# VATSIM Germany Standard Instrument Departure Chart

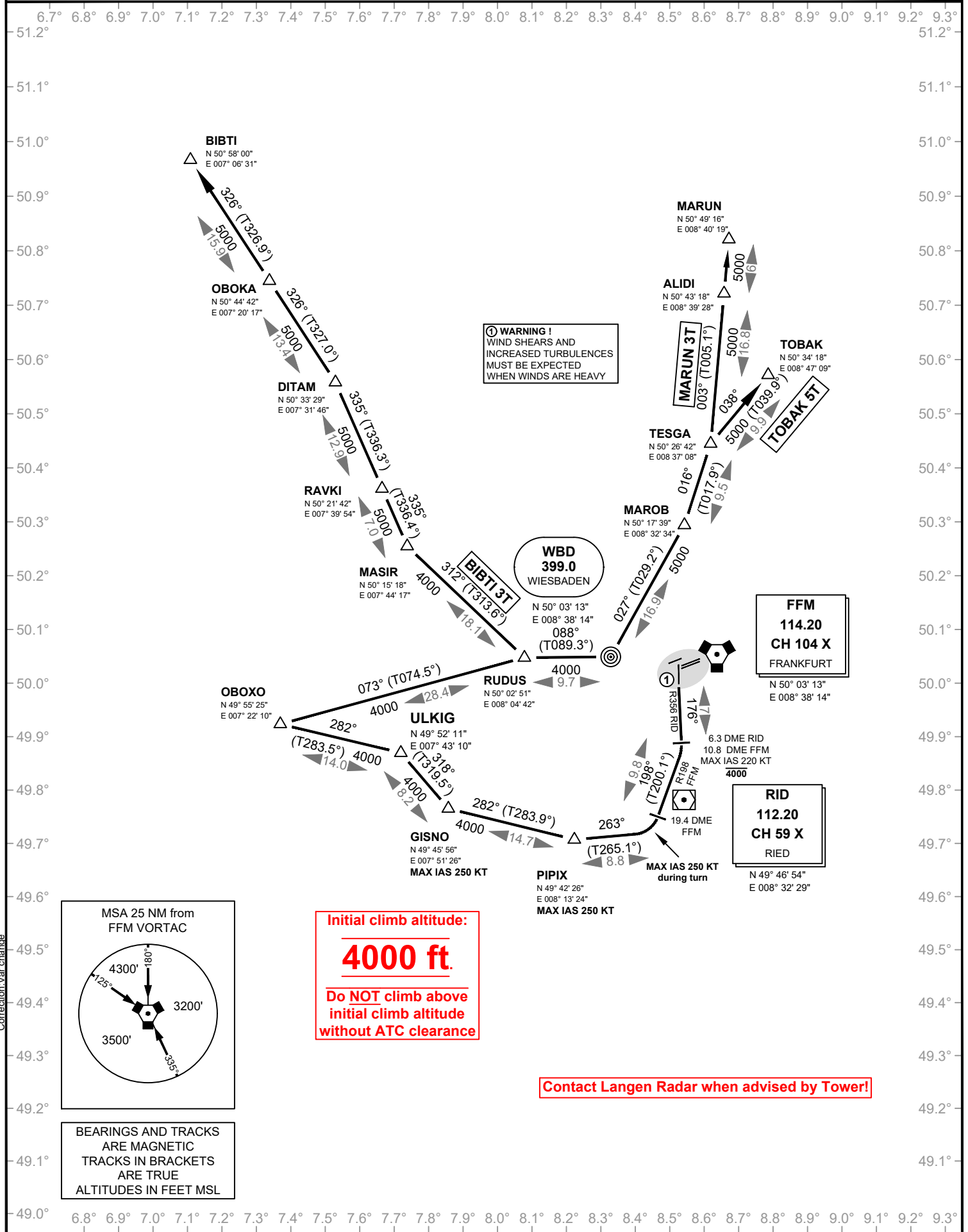
## Frankfurt Main EDDF

Transition Altitude: 5000 ft.

Delivery (Initial Call) 121.900	ATIS 118.020
Apron 121.750	Ground 121.800
121.850	Tower 119.900
121.950	Langen Radar 120.150

## SID TANGO RWY 18

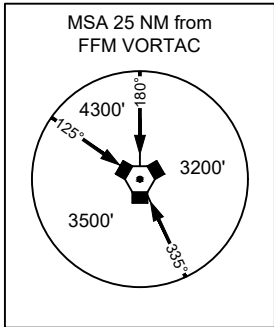
VAR: 2 E



**⚠ WARNING !**  
WIND SHEARS AND  
INCREASED TURBULENCES  
MUST BE EXPECTED  
WHEN WINDS ARE HEAVY

**Initial climb altitude:**  
**4000 ft.**  
Do NOT climb above  
initial climb altitude  
without ATC clearance

**Contact Langen Radar when advised by Tower!**



BEARINGS AND TRACKS  
ARE MAGNETIC  
TRACKS IN BRACKETS  
ARE TRUE  
ALTITUDES IN FEET MSL

# VATSIM Germany Standard Instrument Departure Chart

# Frankfurt Main (North) EDDF

Transition Altitude: 5000 ft.

Delivery (Initial Call) 121.900  
Apron 121.750  
121.850  
121.950

ATIS 118.020  
Ground 121.800  
Tower 119.900  
Langen Radar 120.150

## SID Romeo & Sierra RWY 18

VAR: 2° E

