

VATSIM Germany Standard Instrument Departure Chart

Transition Altitude: 5000 ft.

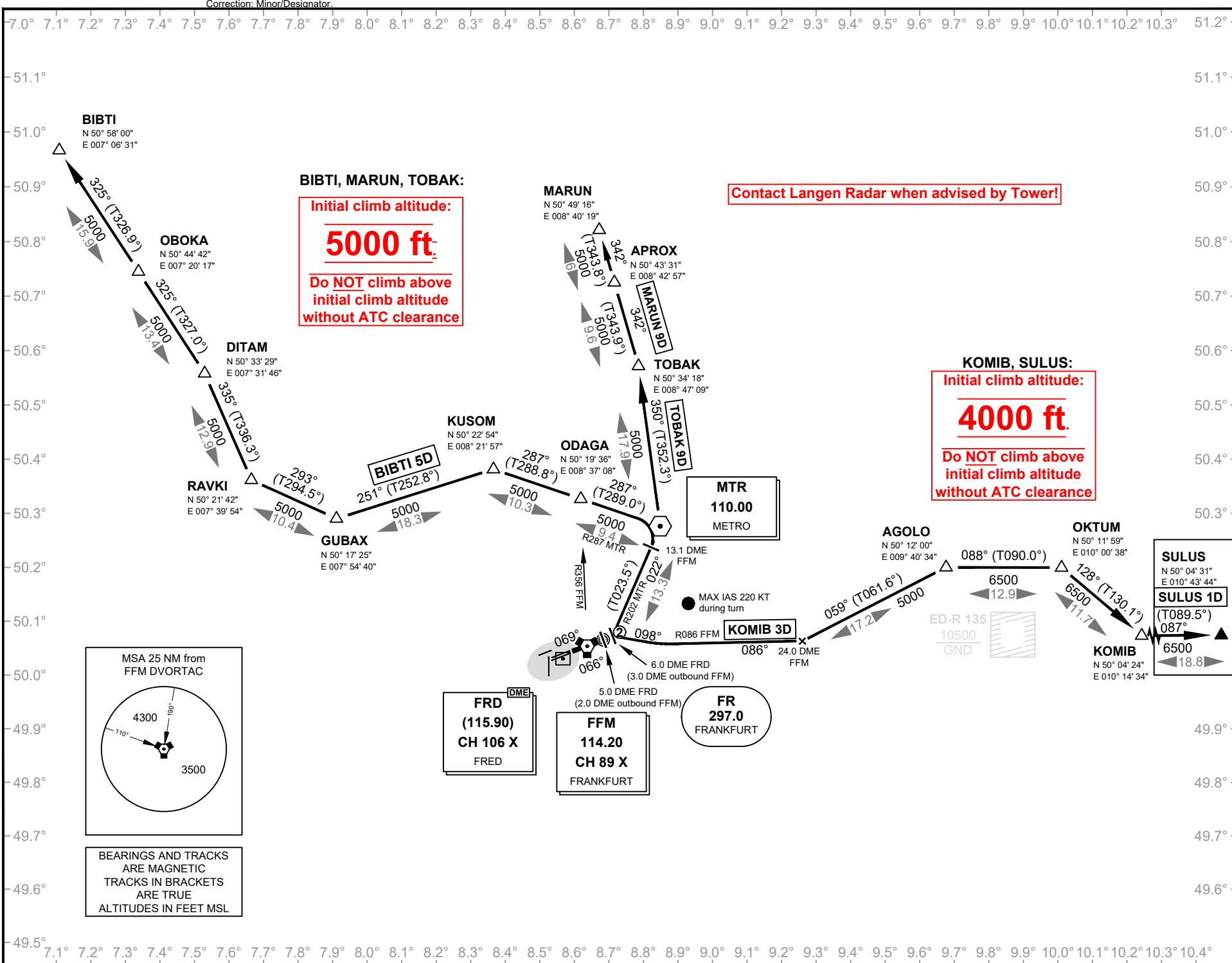
Delivery (Initial Call) 121.900
Apron 121.750
121.850
121.950

ATIS 118.020
Ground 121.800
Tower 119.900
Langen Radar 120.150

Frankfurt Main (North)
EDDF

SID DELTA
RWY 07C / 07R

For flight simulator use only. Not to be used for real world flight.



VATSIM Germany Standard Instrument Departure Chart

Transition Altitude: 5000 ft.

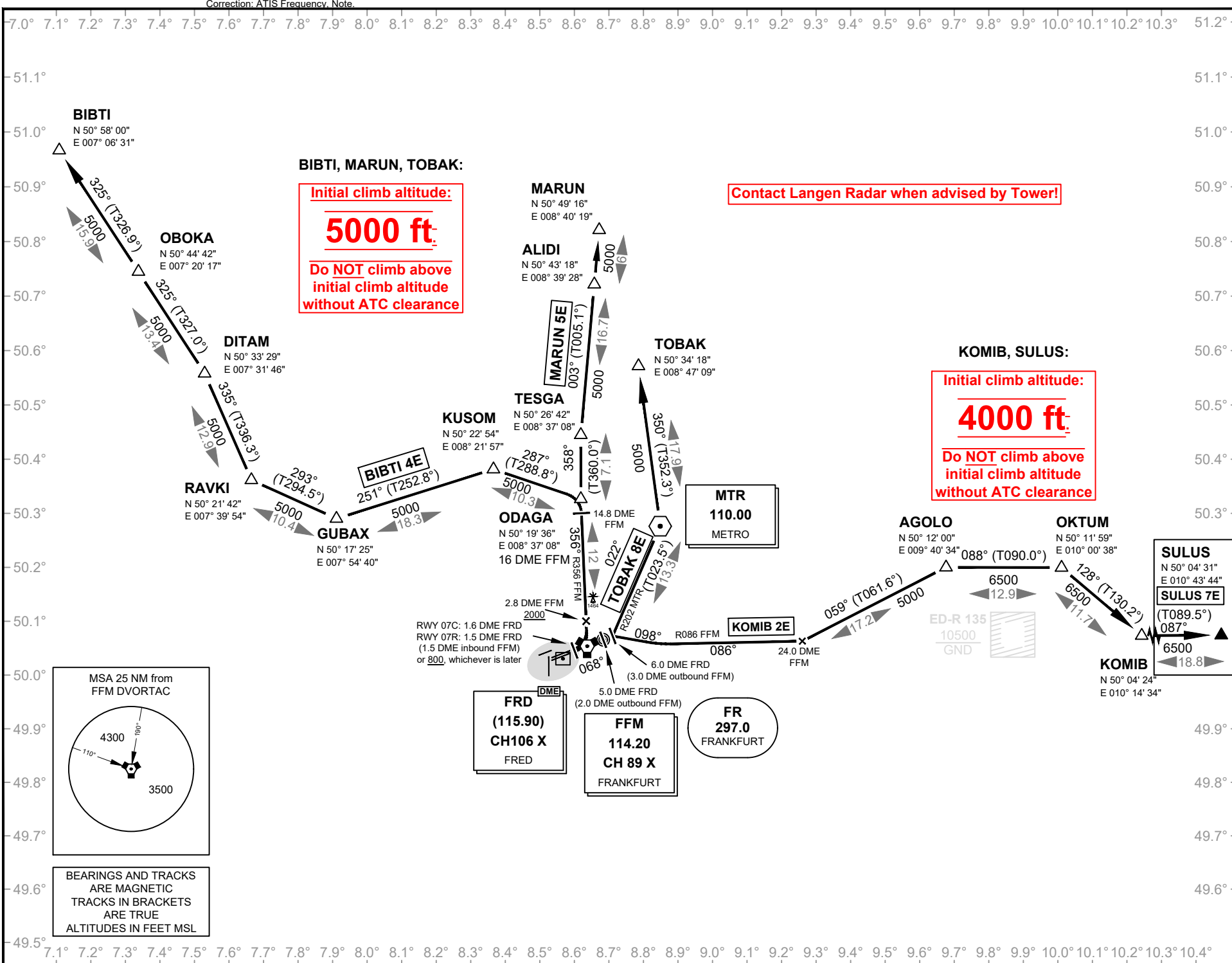
Delivery (Initial Call) 121.900
Apron 121.750
121.850
121.950

ATIS 118.020
Tower 121.800
Ground 119.900
Langen Radar 120.150

Frankfurt Main (North) EDDF

SID ECHO
RWY 07C / 07R

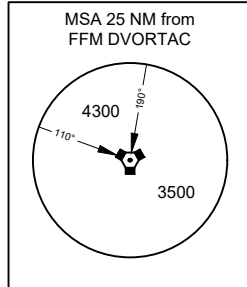
For flight simulator use only. Not to be used for real world flight.



Contact Langen Radar when advised by Tower!

Initial climb altitude:
4000 ft.
Do NOT climb above initial climb altitude without ATC clearance

Initial climb altitude:
5000 ft.
Do NOT climb above initial climb altitude without ATC clearance



BEARINGS AND TRACKS ARE MAGNETIC
TRACKS IN BRACKETS ARE TRUE
ALTITUDES IN FEET MSL

For flight simulator use only. Not to be used for real world flight.

VATSIM Germany Standard Instrument Departure Chart

Transition Altitude: 5000 ft.

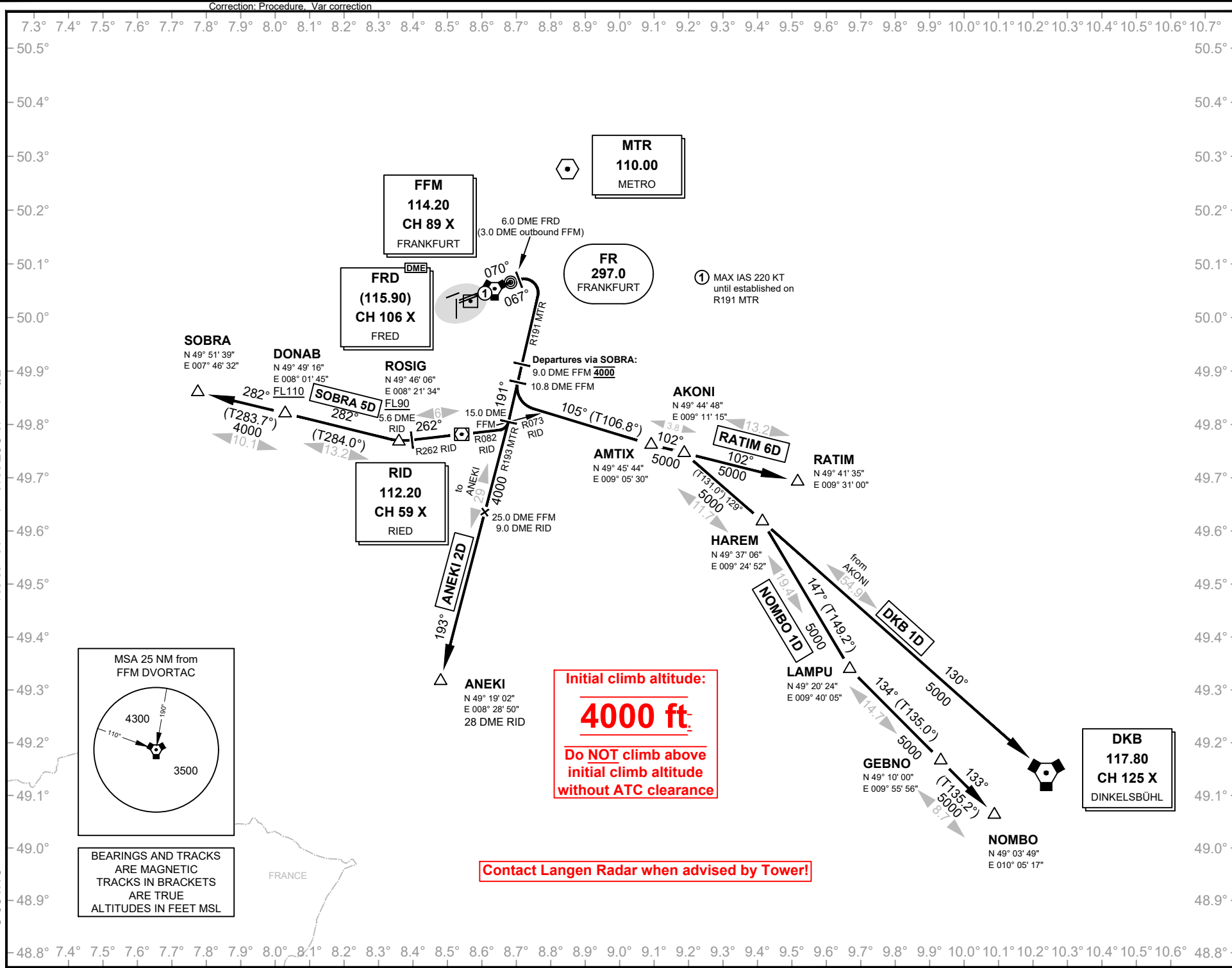
Delivery (Initial Call) Apron

121.900
121.750
121.850
121.950
Langen Radar 120.150

Frankfurt Main (South) EDDF

SID DELTA RWY 07C / 07R

ATIS 118.020
Ground 121.800
Tower 119.900



Effective: 13 OCT 2016, released 25.02.2017

© VAACC Germany

