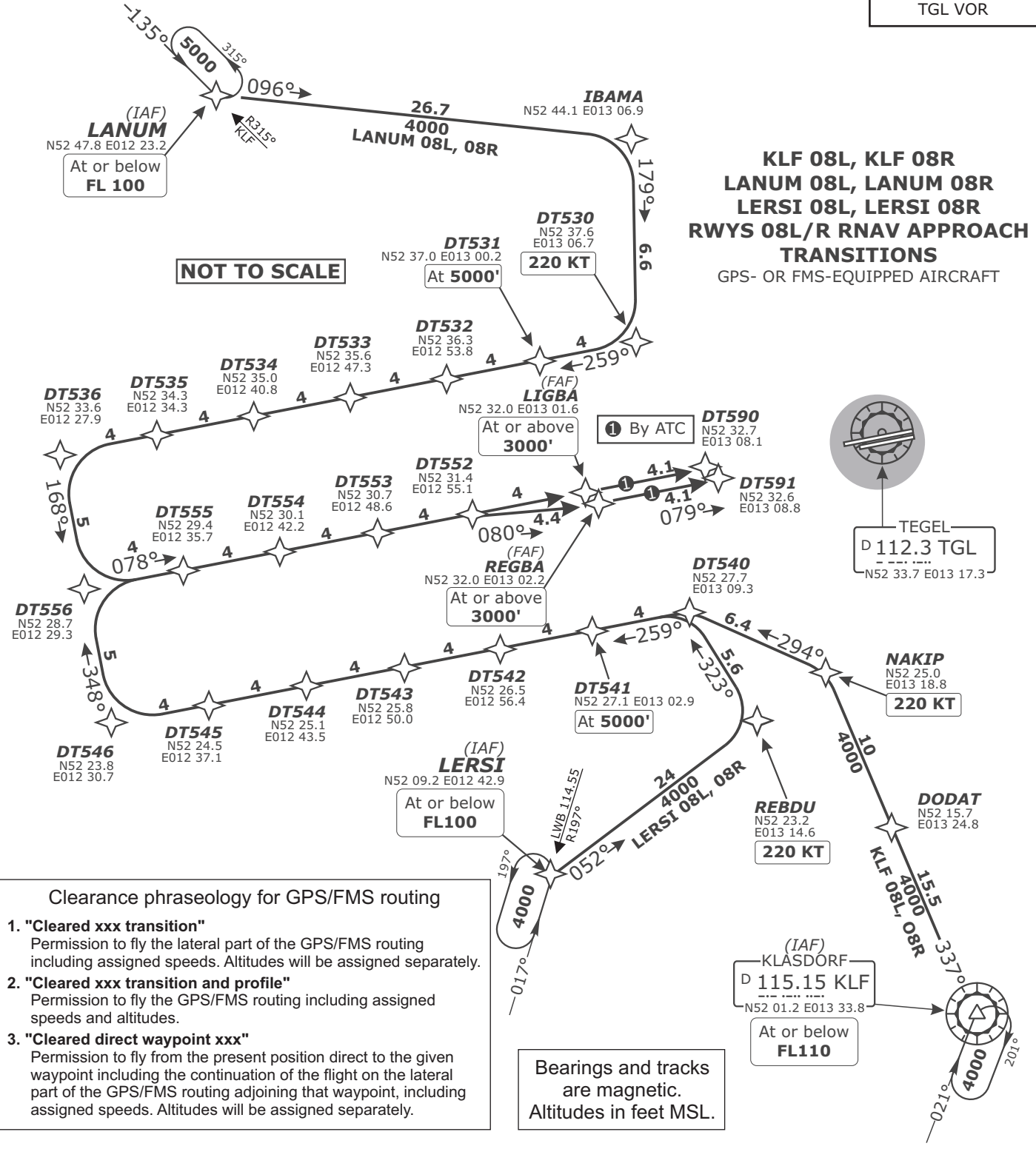
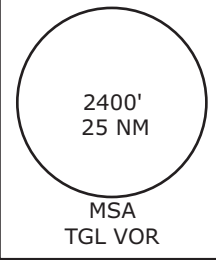


Bremen Radar 119.620 123.220 125.020	Bremen Radar Arrival South 126.420	Berlin Director 121.120	Tegel Tower 124.520
---	--	----------------------------	------------------------

1. Use of transition procedures only when cleared by ATC.
2. On downwind expect vectors to final.
3. Speed restrictions are always mandatory, unless cancelled by ATC.

Trans. alt. 5000'
Apt. elev. 122'
Mag. var. 2° E



- Clearance phraseology for GPS/FMS routing
1. "Cleared xxx transition"
Permission to fly the lateral part of the GPS/FMS routing including assigned speeds. Altitudes will be assigned separately.
 2. "Cleared xxx transition and profile"
Permission to fly the GPS/FMS routing including assigned speeds and altitudes.
 3. "Cleared direct waypoint xxx"
Permission to fly from the present position direct to the given waypoint including the continuation of the flight on the lateral part of the GPS/FMS routing adjoining that waypoint, including assigned speeds. Altitudes will be assigned separately.

Bearings and tracks are magnetic.
Altitudes in feet MSL.

TRANSITION	ROUTING
KLF 08L	KLF (FL110-) - DODAT - NAKIP (K220) - DT540 - DT541 (5000') - DT546 - DT556 - LIGBA (3000'+).
KLF 08R	KLF (FL110-) - DODAT - NAKIP (K220) - DT540 - DT541 (5000') - DT546 - DT556 - DT552 - REGBA (3000'+).
LANUM 08L	LANUM (FL100-) - IBAMA - DT530 (K220) - DT531 (5000') - DT536 - DT556 - LIGBA (3000'+).
LANUM 08R	LANUM (FL100-) - IBAMA - DT530 (K220) - DT531 (5000') - DT536 - DT556 - DT552 - REGBA (3000'+).
LERSI 08L	LERSI (FL100-) - REBDU (K220) - DT540 - DT541 (5000') - DT546 - DT556 - LIGBA (3000'+).
LERSI 08R	LERSI (FL100-) - REBDU (K220) - DT540 - DT541 (5000') - DT546 - DT556 - DT552 - REGBA (3000'+).

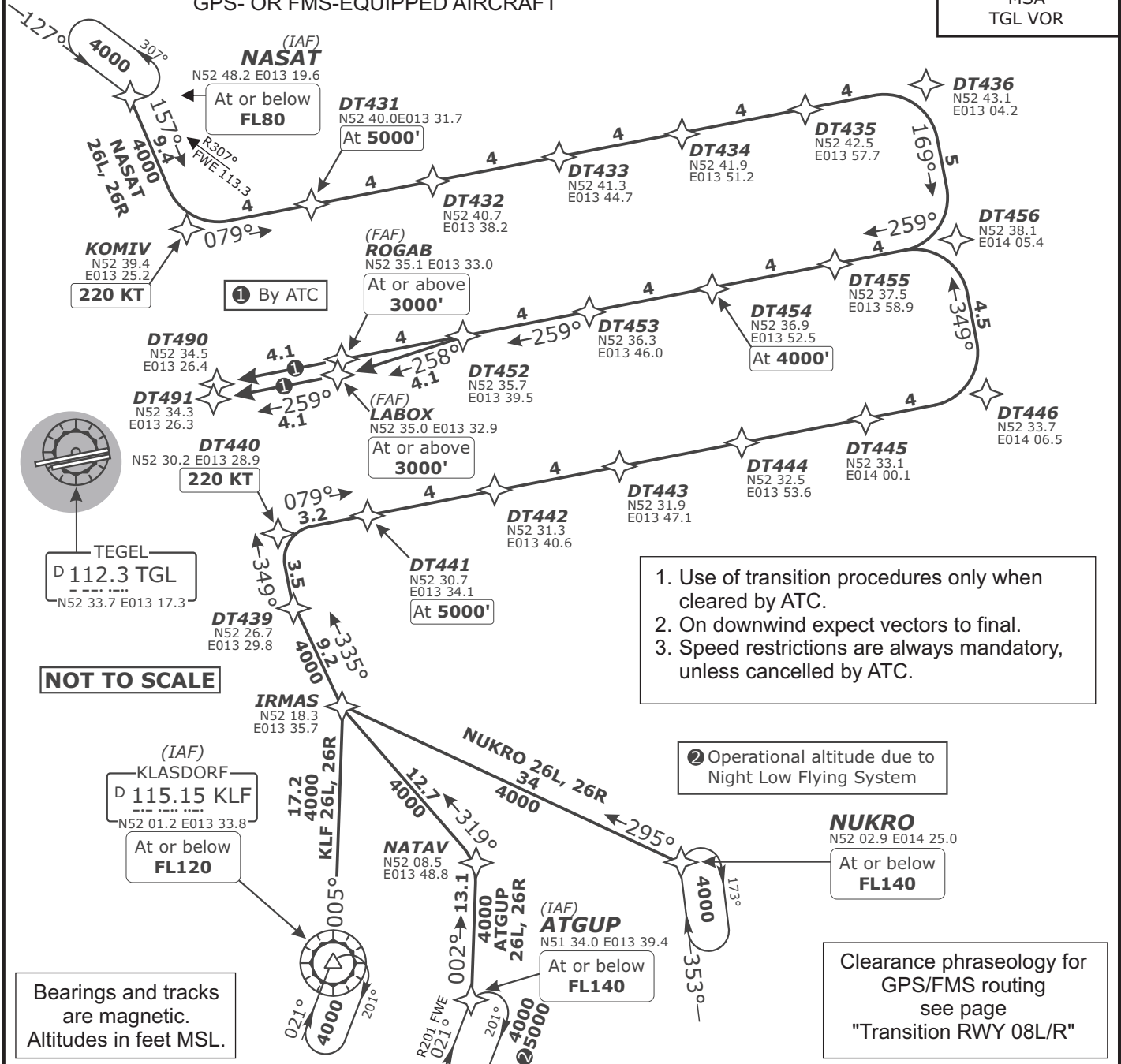
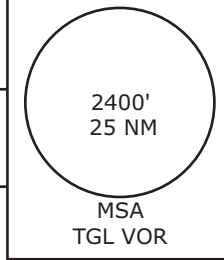
Revision: 2010-06-14. Changes: comm. frequencies; clearance phraseology.

Valid for flight simulation use only - do not use for real life navigation

Bremen Radar 119.620 123.220 125.020	Bremen Radar <i>Arrival South</i> 126.420	Berlin Director 121.120	Tegel Tower 124.520
---	---	----------------------------	------------------------

**ATGUP 26L, ATGUP 26R, KLF 26L, KLF 26R
NASAT 26L, NASAT 26R, NUKRO 26L, NUKRO 26R
RWYS 26L/R RNAV APPROACH TRANSITIONS
GPS- OR FMS-EQUIPPED AIRCRAFT**

Trans. alt. 5000'
Apt. elev. 122'
Mag. var. 2° E



1. Use of transition procedures only when cleared by ATC.
2. On downwind expect vectors to final.
3. Speed restrictions are always mandatory, unless cancelled by ATC.

② Operational altitude due to Night Low Flying System

Clearance phraseology for GPS/FMS routing see page "Transition RWY 08L/R"

Bearings and tracks are magnetic.
Altitudes in feet MSL.

NOT TO SCALE

TRANSITION	ROUTING
ATGUP 26L	ATGUP (FL140-) - NATAV - IRMAS - DT439 - DT440 (K220) - DT441 (5000') - DT446 - DT456 - DT454 (4000') - DT452 - LABOX (3000'+).
ATGUP 26R	ATGUP (FL140-) - NATAV - IRMAS - DT439 - DT440 (K220) - DT441 (5000') - DT446 - DT456 - DT454 (4000') - ROGAB (3000'+).
KLF 26L	KLF (FL120-) - IRMAS - DT439 - DT440 (K220) - DT441 (5000') - DT446 - DT456 - DT454 (4000') - DT452 - LABOX (3000'+).
KLF 26R	KLF (FL120-) - IRMAS - DT439 - DT440 (K220) - DT441 (5000') - DT446 - DT456 - DT454 (4000') - ROGAB (3000'+).
NASAT 26L	NASAT (FL80-) - KOMIV (K220) - DT431 (5000') - DT436 - DT456 - DT454 (4000') - DT452 - LABOX (3000'+).
NASAT 26R	NASAT (FL80-) - KOMIV (K220) - DT431 (5000') - DT436 - DT456 - DT454 (4000') - ROGAB (3000'+).
NUKRO 26L	NURKO (FL140-) - IRMAS - DT439 - DT440 (K220) - DT441 (5000') - DT446 - DT456 - DT454 (4000') - DT452 - LABOX (3000'+).
NUKRO 26R	NURKO (FL140-) - IRMAS - DT439 - DT440 (K220) - DT441 (5000') - DT446 - DT456 - DT454 (4000') - ROGAB (3000'+).

Revision: 2010-06-14. Changes: comm. frequencies; clearance phraseology.

Valid for flight simulation use only - do not use for real life navigation