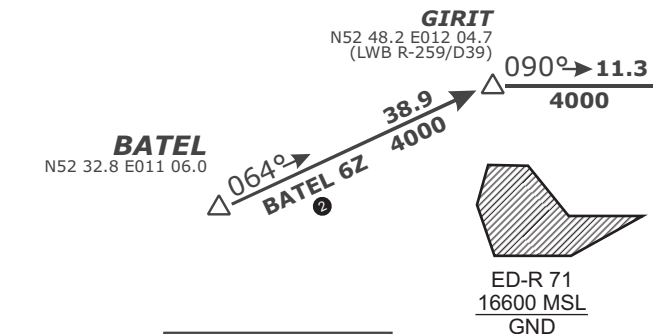


Bearings and tracks are magnetic.  
Altitudes in feet MSL.



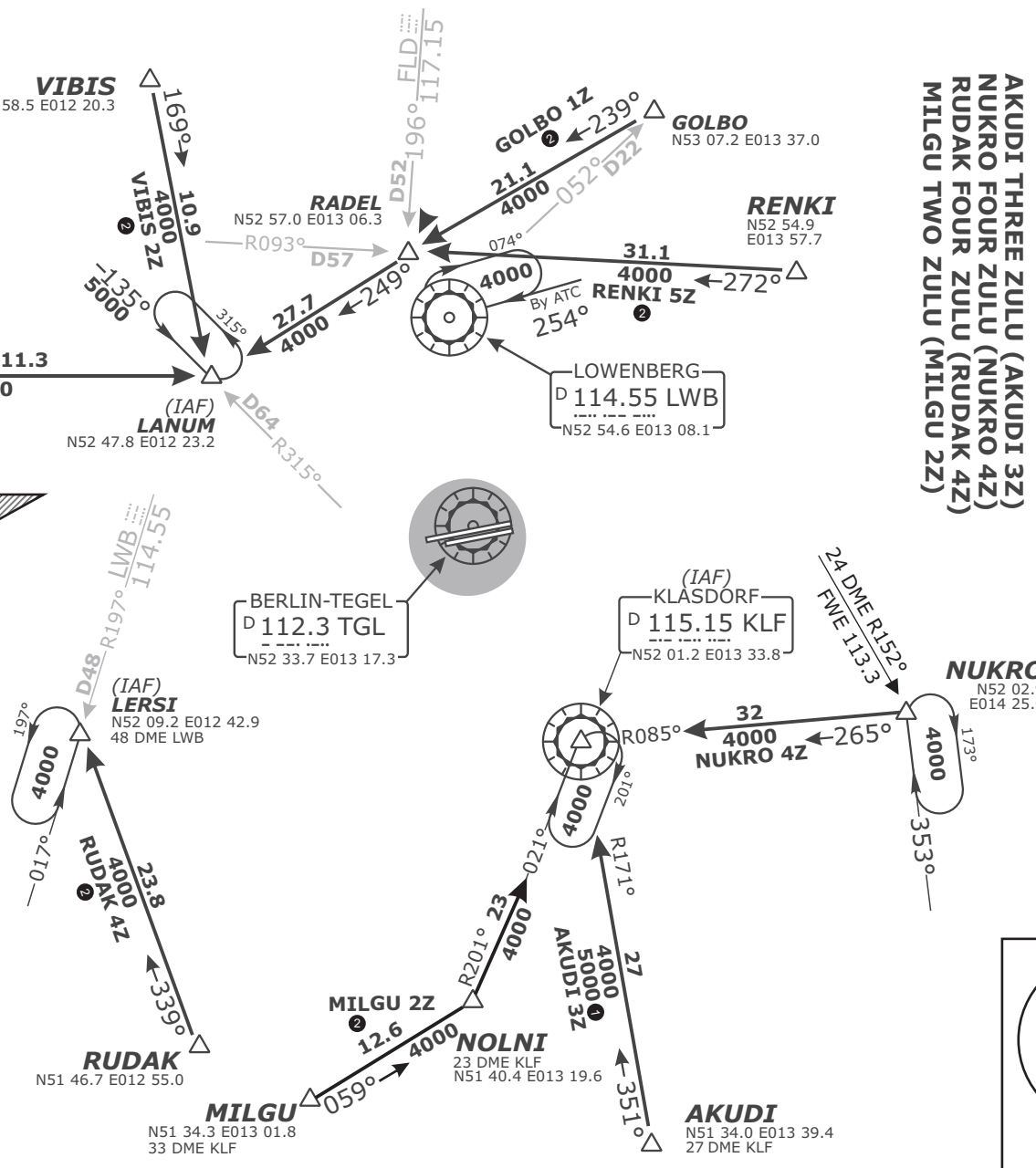
**NOT TO SCALE**

**VERTICAL PLANNING INFORMATION**  
Pilots should plan for possible descent clearance as follows:

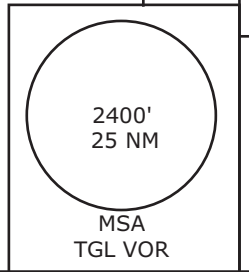
- BATEL 6Z, VIBIS 2Z:** at or below **FL100** by LANUM.
- RENKI 5Z, GOLBO 1Z:** at or below **FL100** by RADEL.
- AKUDI 3Z, MILGU 2Z:** at or below **FL110** by KLF.
- NUKRO 4Z:** at or below **FL140** by NUKRO, at or below **FL110** by KLF.
- RUDAK 4Z:** at or below **FL100** by LERSI.

**ACTUAL DESCEND CLEARANCE WILL BE AS DIRECTED BY ATC.**

- ① Operational altitude due to night low flying system.
- ② BRNAV equipment necessary.



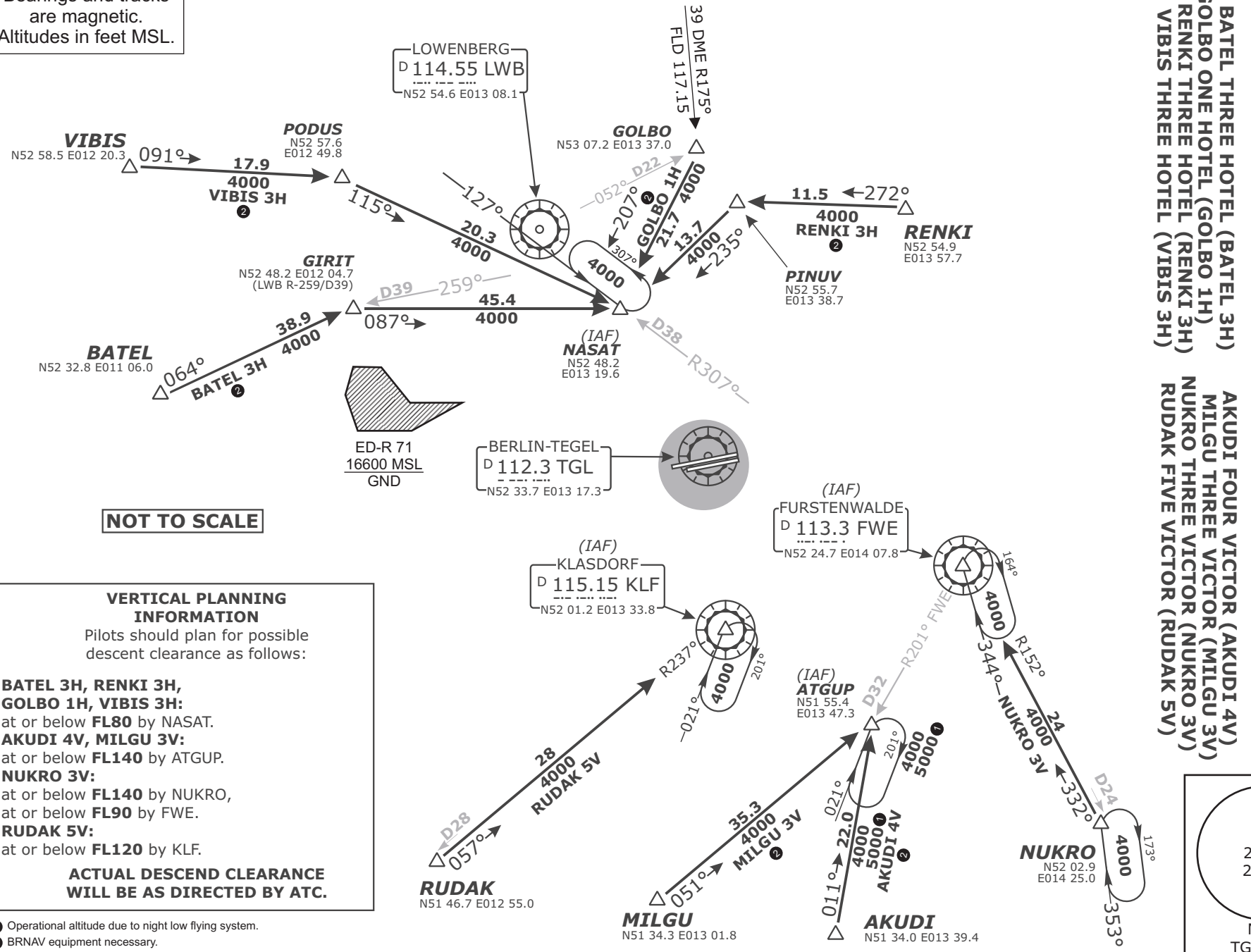
Trans. alt. 5000'  
Apt. elev. 122'  
Mag. var. 2° E



Bremen Radar 119.620 123.220 125.020	Bremen Radar Arrival South 126.420	Berlin Director 121.120	Tegel Tower 124.520	ATIS 125.900
---	--	----------------------------	------------------------	-----------------



Bearings and tracks are magnetic.  
Altitudes in feet MSL.



**NOT TO SCALE**

**VERTICAL PLANNING INFORMATION**

Pilots should plan for possible descent clearance as follows:

- BATEL 3H, RENKI 3H, GOLBO 1H, VIBIS 3H:**  
at or below **FL80** by NASAT.
- AKUDI 4V, MILGU 3V:**  
at or below **FL140** by ATGUP.
- NUKRO 3V:**  
at or below **FL140** by NUKRO,  
at or below **FL90** by FWE.
- RUDAK 5V:**  
at or below **FL120** by KLF.

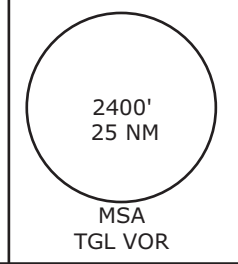
**ACTUAL DESCEND CLEARANCE WILL BE AS DIRECTED BY ATC.**

- ① Operational altitude due to night low flying system.
- ② BRNAV equipment necessary.

**BATEL THREE HOTEL (BATEL 3H)**  
**GOLBO ONE HOTEL (GOLBO 1H)**  
**RENKI THREE HOTEL (RENKI 3H)**  
**VIBIS THREE HOTEL (VIBIS 3H)**

**AKUDI FOUR VICTOR (AKUDI 4V)**  
**MILGU THREE VICTOR (MILGU 3V)**  
**NUKRO THREE VICTOR (NUKRO 3V)**  
**RUDAK FIVE VICTOR (RUDAK 5V)**

Trans. alt. 5000'  
Apt. elev. 122'  
Mag. var. 2° E



Bremen Radar 119.620 123.220 125.020	Bremen Radar Arrival South 126.420	Berlin Director 121.120	Tegel Tower 124.520	ATIS 125.900
---	--	----------------------------	------------------------	-----------------

**Berlin, GERMANY**  
Berlin-Tegel (TXL)



**STAR RWY 26L/R**  
**EDDT**