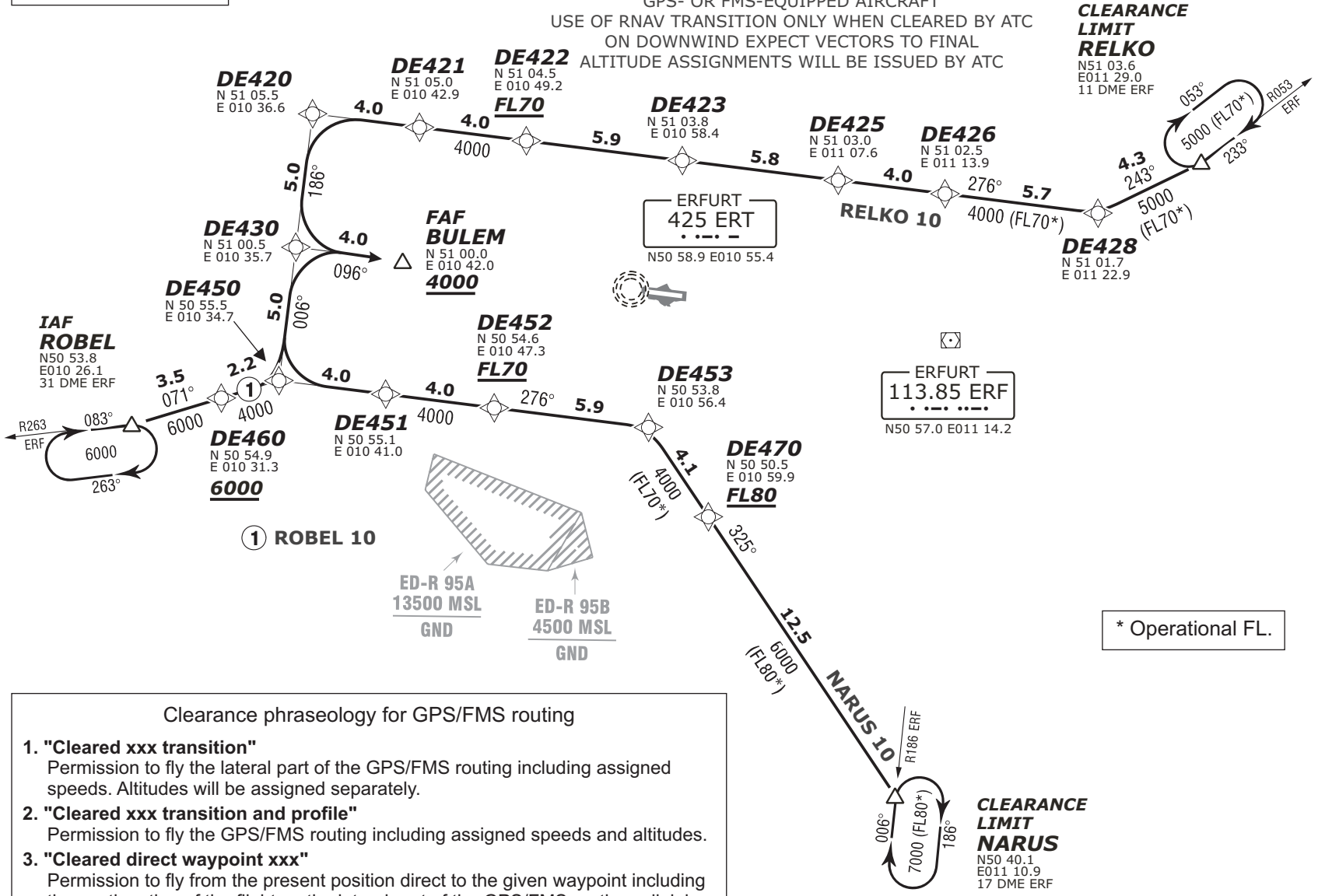


Bearings and tracks are magnetic.
Altitudes in feet MSL.

NARUS 10, RELKO 10, ROBEL 10 RWY 10

RNAV APPROACH TRANSITIONS

GPS- OR FMS-EQUIPPED AIRCRAFT
USE OF RNAV TRANSITION ONLY WHEN CLEARED BY ATC
ON DOWNWIND EXPECT VECTORS TO FINAL
ALTITUDE ASSIGNMENTS WILL BE ISSUED BY ATC

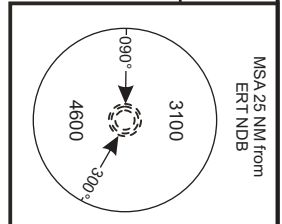


CLEARANCE LIMIT RELKO
N51 03.6
E011 29.0
11 DME ERF

ERFURT 113.85 ERF
N50 57.0 E011 14.2

* Operational FL.

- Clearance phraseology for GPS/FMS routing
- "Cleared xxx transition"**
Permission to fly the lateral part of the GPS/FMS routing including assigned speeds. Altitudes will be assigned separately.
 - "Cleared xxx transition and profile"**
Permission to fly the GPS/FMS routing including assigned speeds and altitudes.
 - "Cleared direct waypoint xxx"**
Permission to fly from the present position direct to the given waypoint including the continuation of the flight on the lateral part of the GPS/FMS routing adjoining that waypoint, including assigned speeds. Altitudes will be assigned separately.



Erfurt, GERMANY Erfurt (ERF)	ATIS 133.420	München Radar 126.170 133.570 131.020 129.100	Erfurt Tower 121.150	Erfurt Ground 121.750	EDDE
					MSA 25 NM from ERT NDB

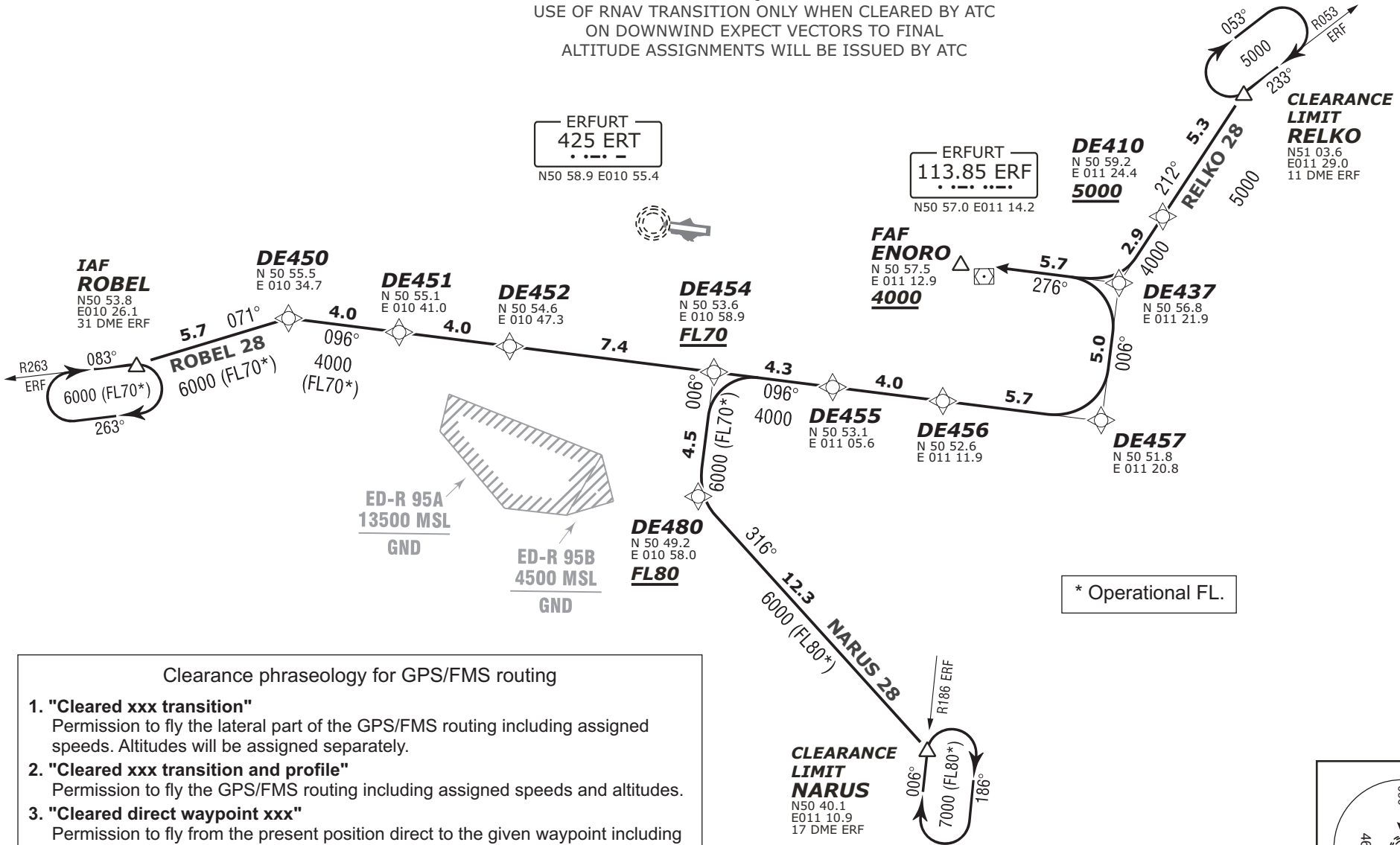
Valid for flight simulation use only - do not use for real life navigation

Bearings and tracks are magnetic.
Altitudes in feet MSL.

NARUS 28, RELKO 28, ROBEL 28 RWY 28

RNAV APPROACH TRANSITIONS

GPS- OR FMS-EQUIPPED AIRCRAFT
USE OF RNAV TRANSITION ONLY WHEN CLEARED BY ATC
ON DOWNWIND EXPECT VECTORS TO FINAL
ALTITUDE ASSIGNMENTS WILL BE ISSUED BY ATC



* Operational FL.

- Clearance phraseology for GPS/FMS routing
- "Cleared xxx transition"**
Permission to fly the lateral part of the GPS/FMS routing including assigned speeds. Altitudes will be assigned separately.
 - "Cleared xxx transition and profile"**
Permission to fly the GPS/FMS routing including assigned speeds and altitudes.
 - "Cleared direct waypoint xxx"**
Permission to fly from the present position direct to the given waypoint including the continuation of the flight on the lateral part of the GPS/FMS routing adjoining that waypoint, including assigned speeds. Altitudes will be assigned separately.

ATIS 133.420	München Radar 126.170 133.570 131.020 129.100	Erfurt Tower 121.150	Erfurt Ground 121.750
-----------------	--	-------------------------	--------------------------

Effective 2009-03-12

GPS/FMS RNAV Transition RWY 28

EDDE

Valid for flight simulation use only - do not use for real life navigation