

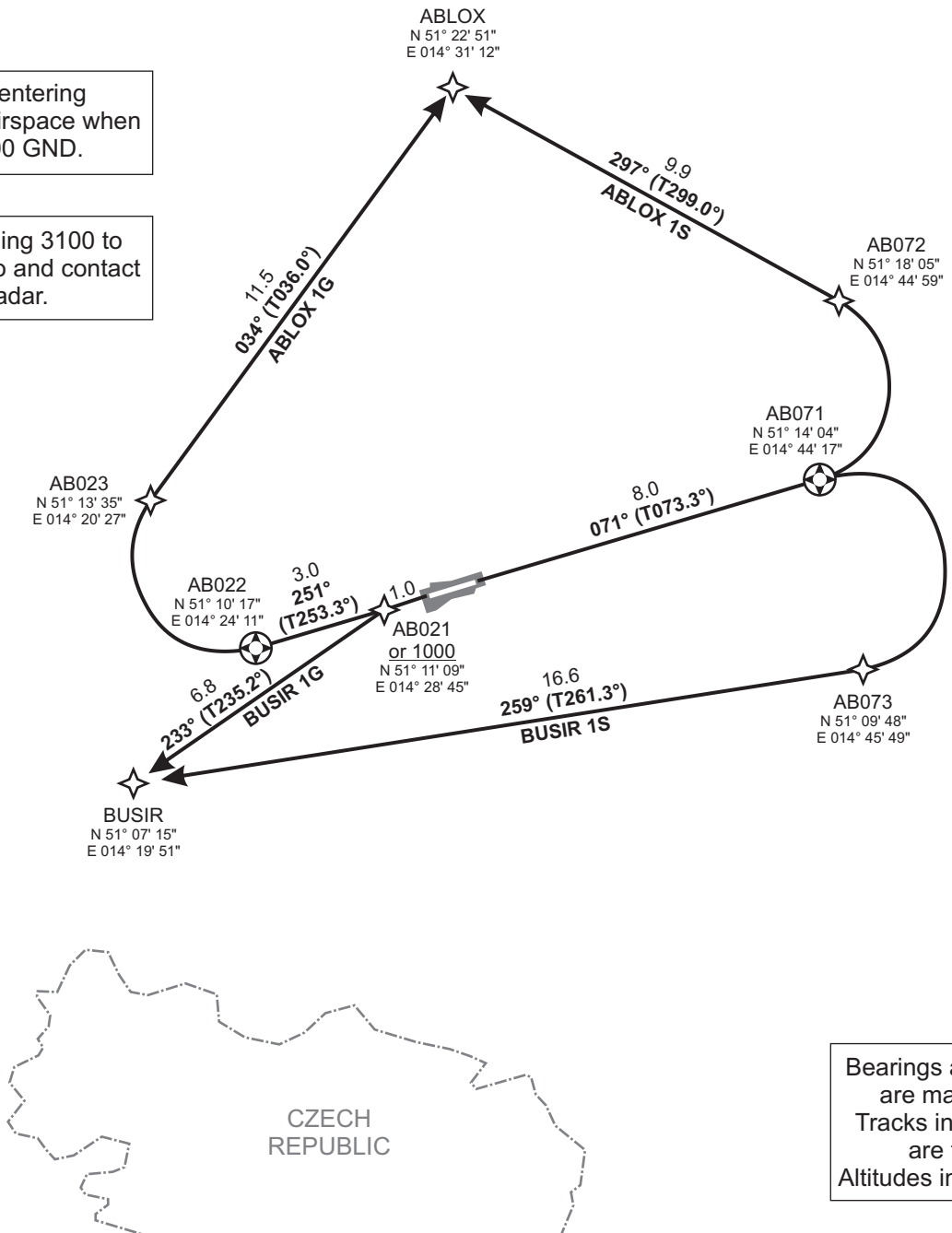
<b>MÜNCHEN RADAR</b>	<b>125.620 126.170</b> <b>131.020 129.100</b>	<b>INFO</b>	<b>120.600</b>	Mag. Variation	2° E	MSA 25 NM from ARP*  * German territory only
				Elevation	568'	
				Transition altitude	5000'	
				Transition level	by ATC	

**ABLOX ONE GOLF (ABLOX 1G)**  
**ABLOX ONE SIERRA (ABLOX 1S)**  
**BUSIR ONE GOLF (BUSIR 1G)**  
**BUSIR ONE SIERRA (BUSIR 1S)**  
**RWY 07/25 DEPARTURES**

Initial climb clearance **5000**

Departures entering controlled airspace when passing 2500 GND.

Report passing 3100 to Bautzen Info and contact München Radar.



Bearings and tracks are magnetic.  
 Tracks in brackets are true.  
 Altitudes in feet MSL.

SID	RWY	Routing	Remarks
<b>ABLOX 1G</b>	<b>25</b>	Climb on track 251° to AB022; RT, via AB023 on track 034° to ABLOX. <b>GPS/FMS RNAV:</b> [A1000+] - <u>AB022</u> [R] - AB023 - ABLOX.	Only for flights to EDDB and EDDT.
<b>ABLOX 1S</b>	<b>07</b>	Climb on track 071° to AB071; LT, via AB072 on track 297° to ABLOX. <b>GPS/FMS RNAV:</b> [A1000+] - <u>AB071</u> [L] - AB072 - ABLOX.	
<b>BUSIR 1G</b>	<b>25</b>	Climb on track 251° to AB021 or 1000, whichever is later; LT, on track 233° to BUSIR. <b>GPS/FMS RNAV:</b> [A1000+] - AB021[A1000+; L] - BUSIR.	
<b>BUSIR 1S</b>	<b>07</b>	Climb on track 071° to AB071; RT, via AB073 on track 259° to BUSIR. <b>GPS/FMS RNAV:</b> [A1000+] - <u>AB071</u> [R] - AB073 - BUSIR.	

Revision: 2010-05-21. Changes: comm. frequencies.

Valid for flight simulation use only - do not use for real life navigation